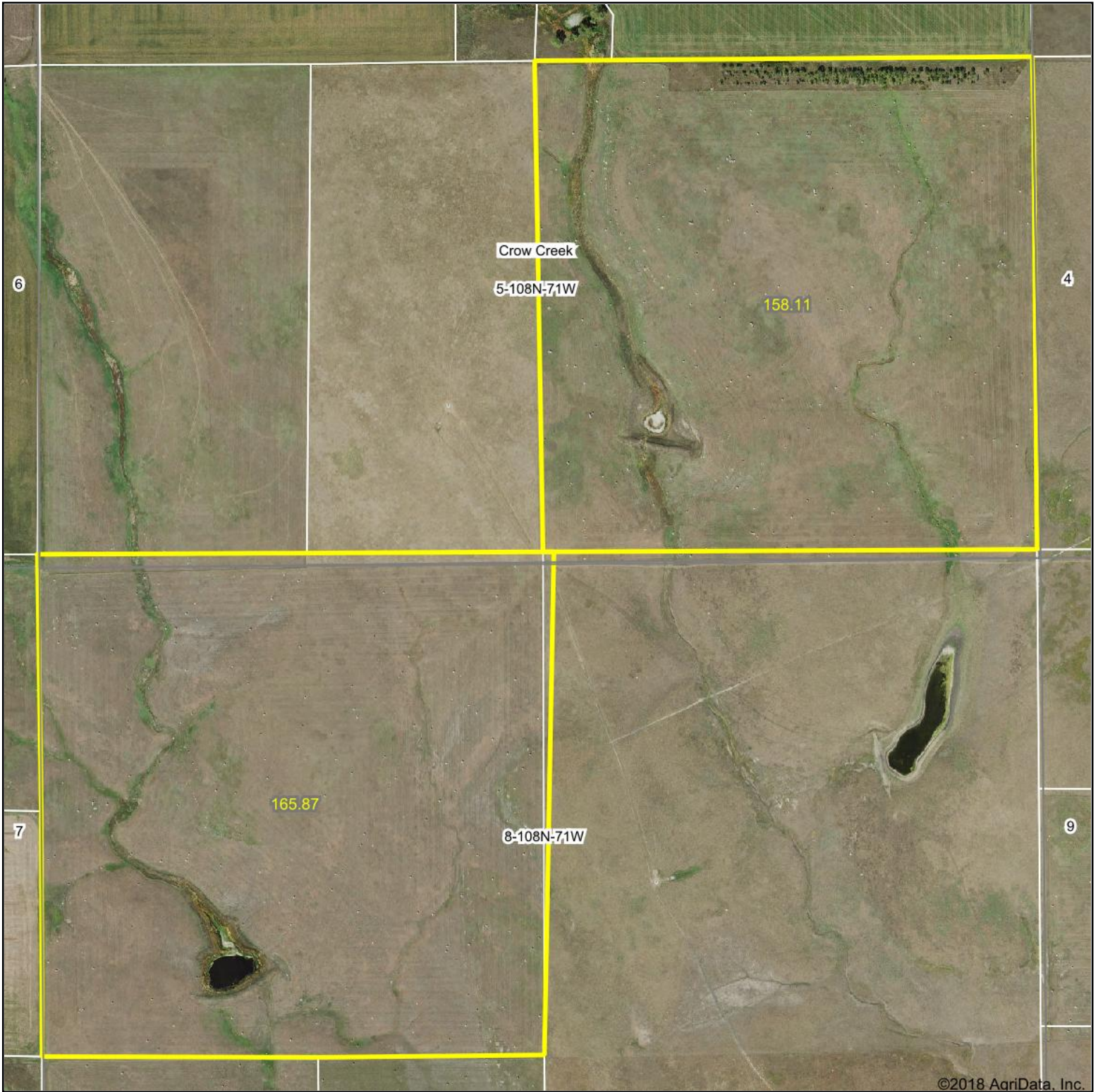
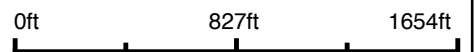


Aerial Map



©2018 AgriData, Inc.

map center: 44° 10' 44.25, -99° 22' 42.54



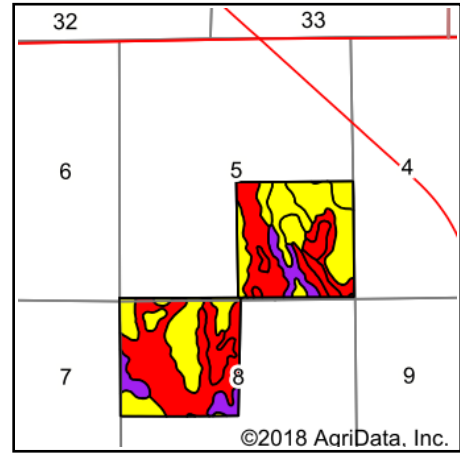
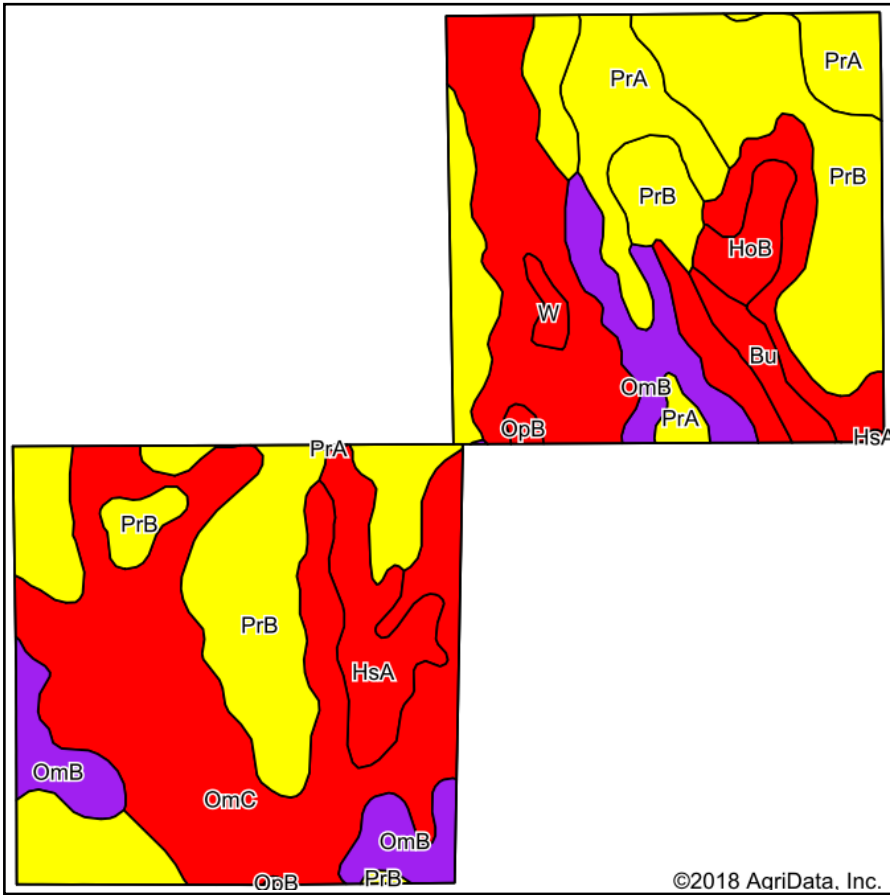
Maps Provided By:
 **surety**
CUSTOMIZED ONLINE MAPPING
© AgriData, Inc. 2018 www.AgriDataInc.com

5-108N-71W
Buffalo County
South Dakota



5/14/2018

Soils Map



State: **South Dakota**
 County: **Buffalo**
 Location: **5-108N-71W**
 Township: **Crow Creek**
 Acres: **323.98**
 Date: **5/14/2018**

Maps Provided By:

 CUSTOMIZED ONLINE MAPPING
 © Agridata, Inc. 2018 www.AgridataInc.com



Soils data provided by USDA and NRCS.

©2018 AgriData, Inc.

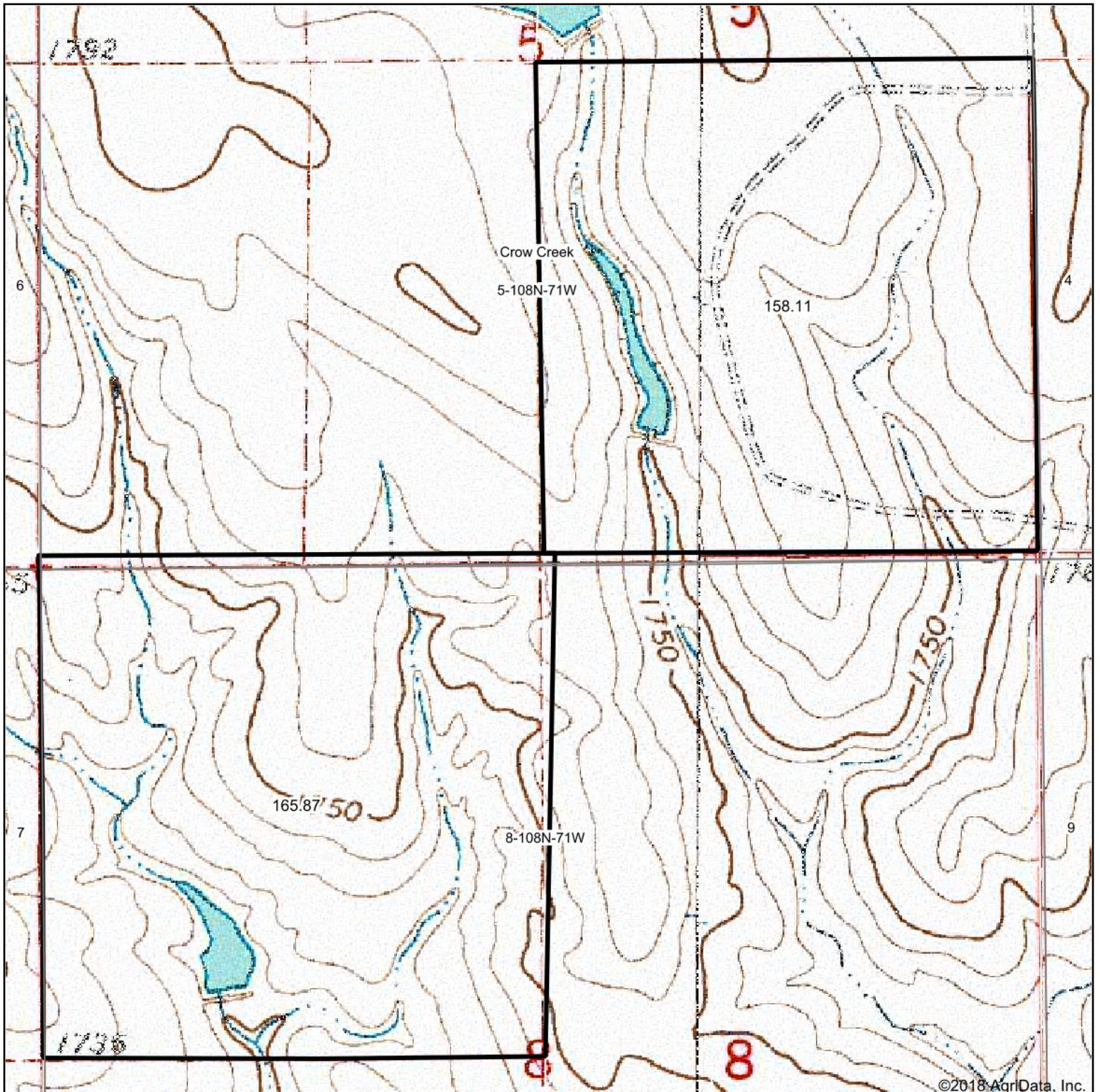
Area Symbol: SD603, Soil Area Version: 21

| Code | Soil Description | Acres | Percent of field | PI Legend | Non-Irr Class *c | Irr Class *c | Productivity Index | State Productivity Index | Corn | Grain sorghum | Oats | Winter wheat | Spring wheat |
|-------------------------|--------------------------------------------------|--------|------------------|-----------|------------------|--------------|--------------------|--------------------------|------------|---------------|------------|--------------|--------------|
| OmC | Opal clay, 6 to 9 percent slopes | 132.90 | 41.0% | | IVe | IVe | 49 | 35 | | | | | |
| PrB | Promise clay, 3 to 6 percent slopes | 109.34 | 33.7% | | IIIe | IIIe | 64 | 45 | | | | | |
| OmB | Opal clay, 3 to 6 percent slopes | 26.58 | 8.2% | | IIIe | IIIe | 60 | 43 | | | | | |
| PrA | Promise clay, 0 to 3 percent slopes | 24.88 | 7.7% | | IIIs | IIIs | 68 | 48 | | | | | |
| HsA | Hurley-Slickspots complex, 1 to 4 percent slopes | 15.48 | 4.8% | | VI s | | 10 | 7 | 1 | 1 | 2 | 2 | 1 |
| HoB | Hurley silt loam, 0 to 6 percent slopes | 6.43 | 2.0% | | VI s | | 12 | 9 | 3 | 4 | 5 | 4 | 1 |
| Bu | Bullcreek clay, 0 to 6 percent slopes | 5.30 | 1.6% | | VI s | VI s | 13 | 9 | | | | | |
| W | Water | 1.94 | 0.6% | | | | 0 | 0 | | | | | |
| OpB | Opal clay, saline, 1 to 6 percent slopes | 1.13 | 0.3% | | VI s | VI s | 46 | 33 | | | | | |
| Weighted Average | | | | | | | 52.9 | 37.5 | 0.1 | 0.1 | 0.2 | 0.2 | 0.1 |

*c: Using Capabilities Class Dominant Condition Aggregation Method

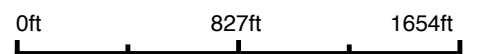
Soils data provided by USDA and NRCS.

Topography Map

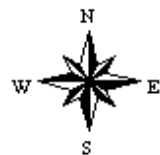


©2018 AgriData, Inc.

map center: 44° 10' 44.25, -99° 22' 42.54



5-108N-71W
Buffalo County
South Dakota



5/14/2018

Maps Provided By:



© AgriData, Inc. 2018 www.AgridataInc.com