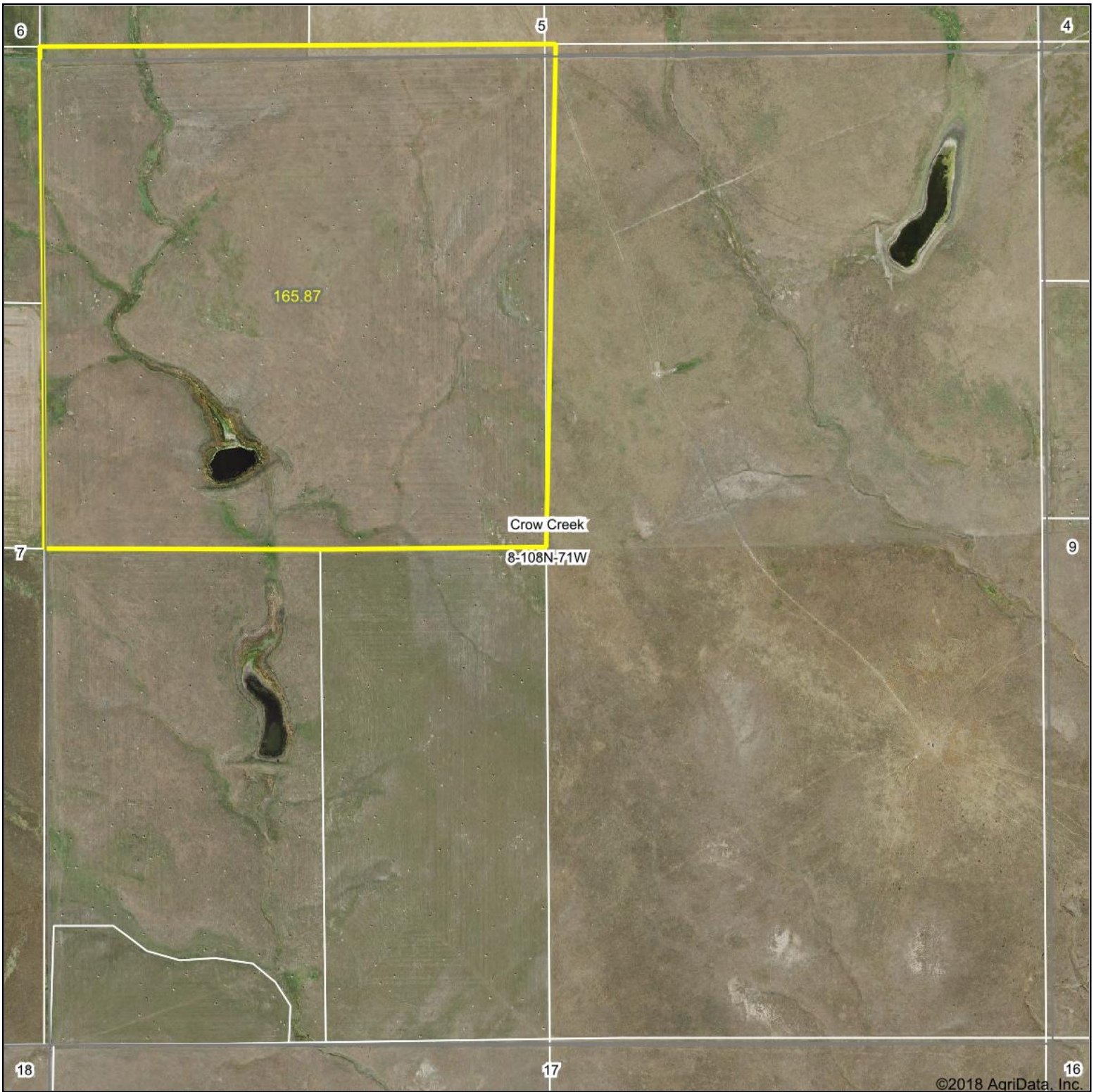


Aerial Map



©2018 AgriData, Inc.

map center: 44° 10' 17.56, -99° 22' 42.57



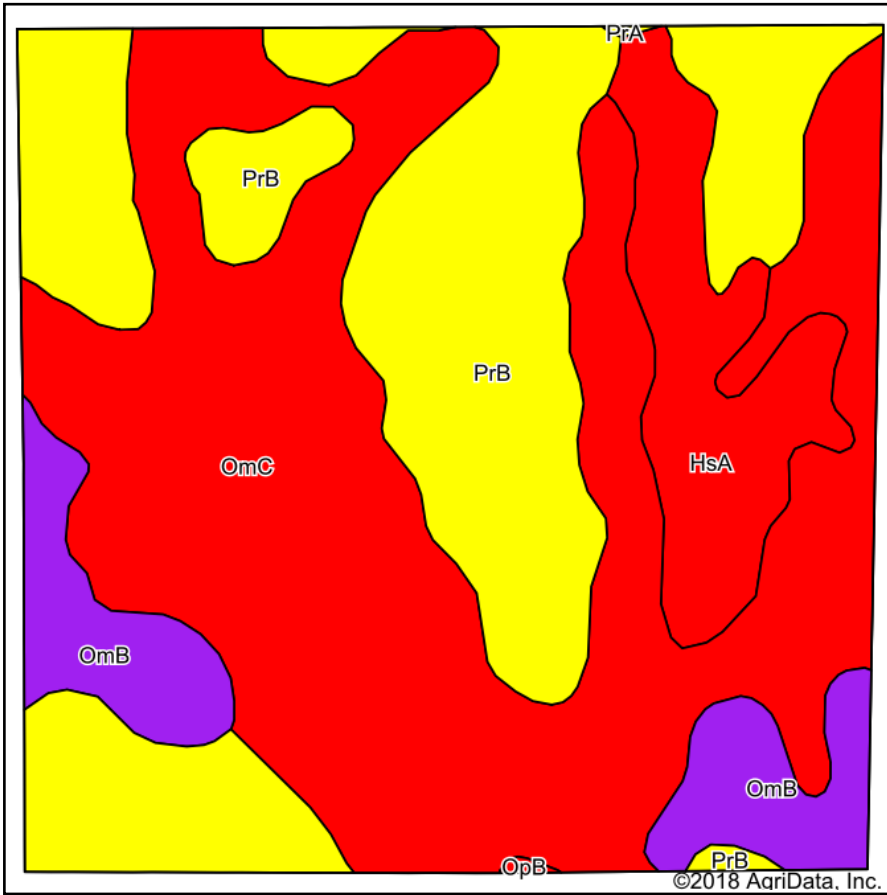
Maps Provided By:
 **surety**[®]
CUSTOMIZED ONLINE MAPPING
© AgriData, Inc. 2018 www.AgriDataInc.com

8-108N-71W
Buffalo County
South Dakota

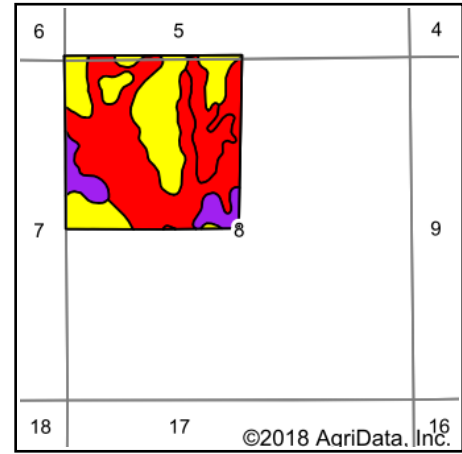


5/14/2018

Soils Map



Soils data provided by USDA and NRCS.



State: **South Dakota**
 County: **Buffalo**
 Location: **8-108N-71W**
 Township: **Crow Creek**
 Acres: **165.87**
 Date: **5/14/2018**

Maps Provided By:



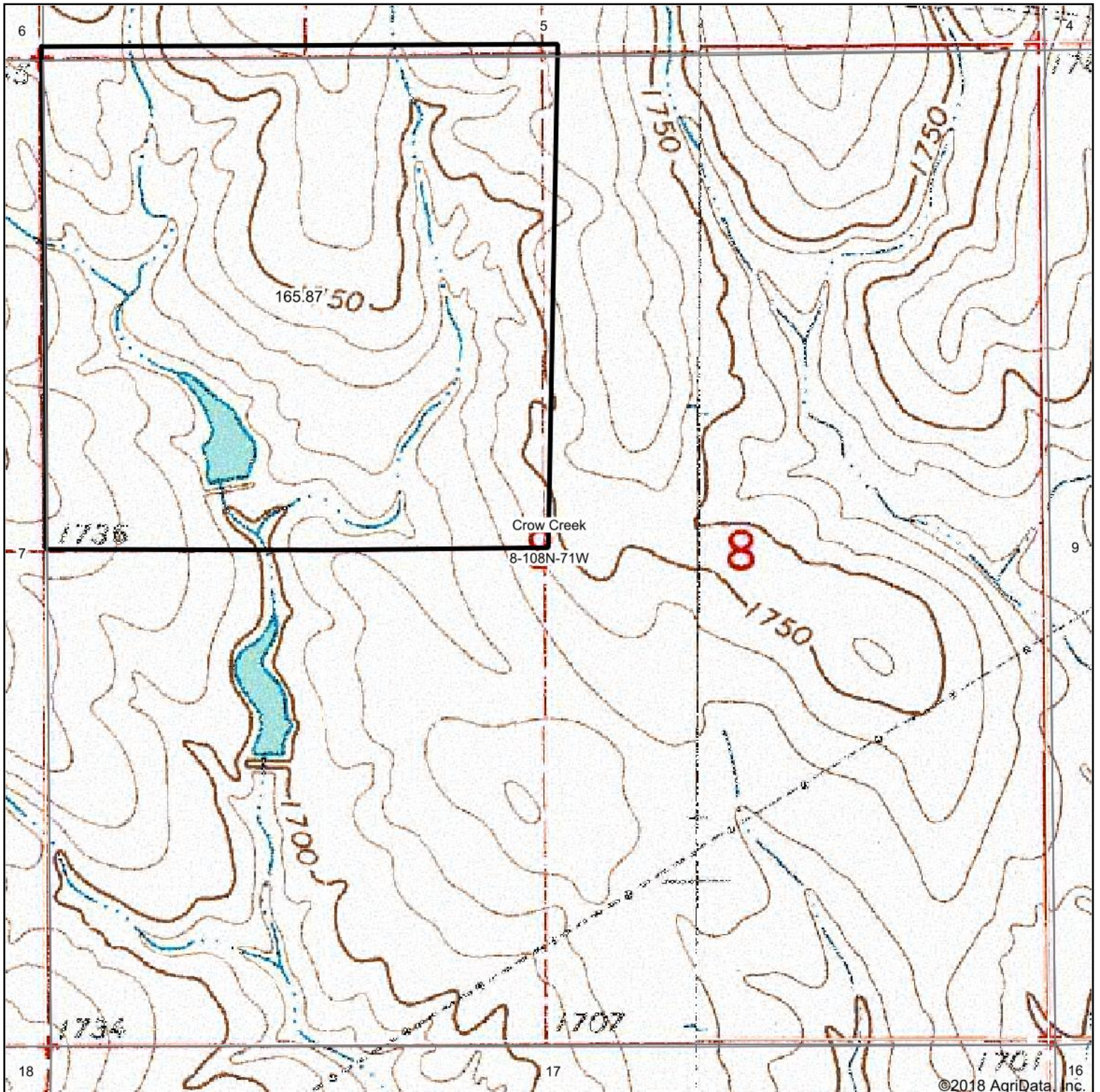
Area Symbol: SD603, Soil Area Version: 21

Code	Soil Description	Acres	Percent of field	PI Legend	Non-Irr Class *c	Irr Class *c	Productivity Index	State Productivity Index	Corn	Grain sorghum	Oats	Spring wheat	Winter wheat	
OmC	Opal clay, 6 to 9 percent slopes	81.82	49.3%		IVe	IVe	49	35						
PrB	Promise clay, 3 to 6 percent slopes	54.81	33.0%		IIIe	IIIe	64	45						
HsA	Hurley-Slickspots complex, 1 to 4 percent slopes	15.30	9.2%		VIIs		10	7	1	1	2	1	2	
OmB	Opal clay, 3 to 6 percent slopes	13.72	8.3%		IIIe	IIIe	60	43						
OpB	Opal clay, saline, 1 to 6 percent slopes	0.14	0.1%		VIIs	VIIs	46	33						
PrA	Promise clay, 0 to 3 percent slopes	0.08	0.0%		IIIIs	IIIIs	68	48						
Weighted Average								51.3	36.4	0.1	0.1	0.2	0.1	0.2

*c: Using Capabilities Class Dominant Condition Aggregation Method

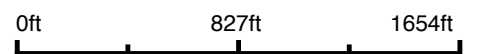
Soils data provided by USDA and NRCS.

Topography Map

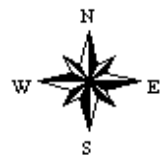


©2018 AgriData, Inc.

map center: 44° 10' 17.56, -99° 22' 42.57



8-108N-71W
Buffalo County
South Dakota



5/14/2018

Maps Provided By:

CUSTOMIZED ONLINE MAPPING
© AgriData, Inc. 2018 www.AgrIDataInc.com