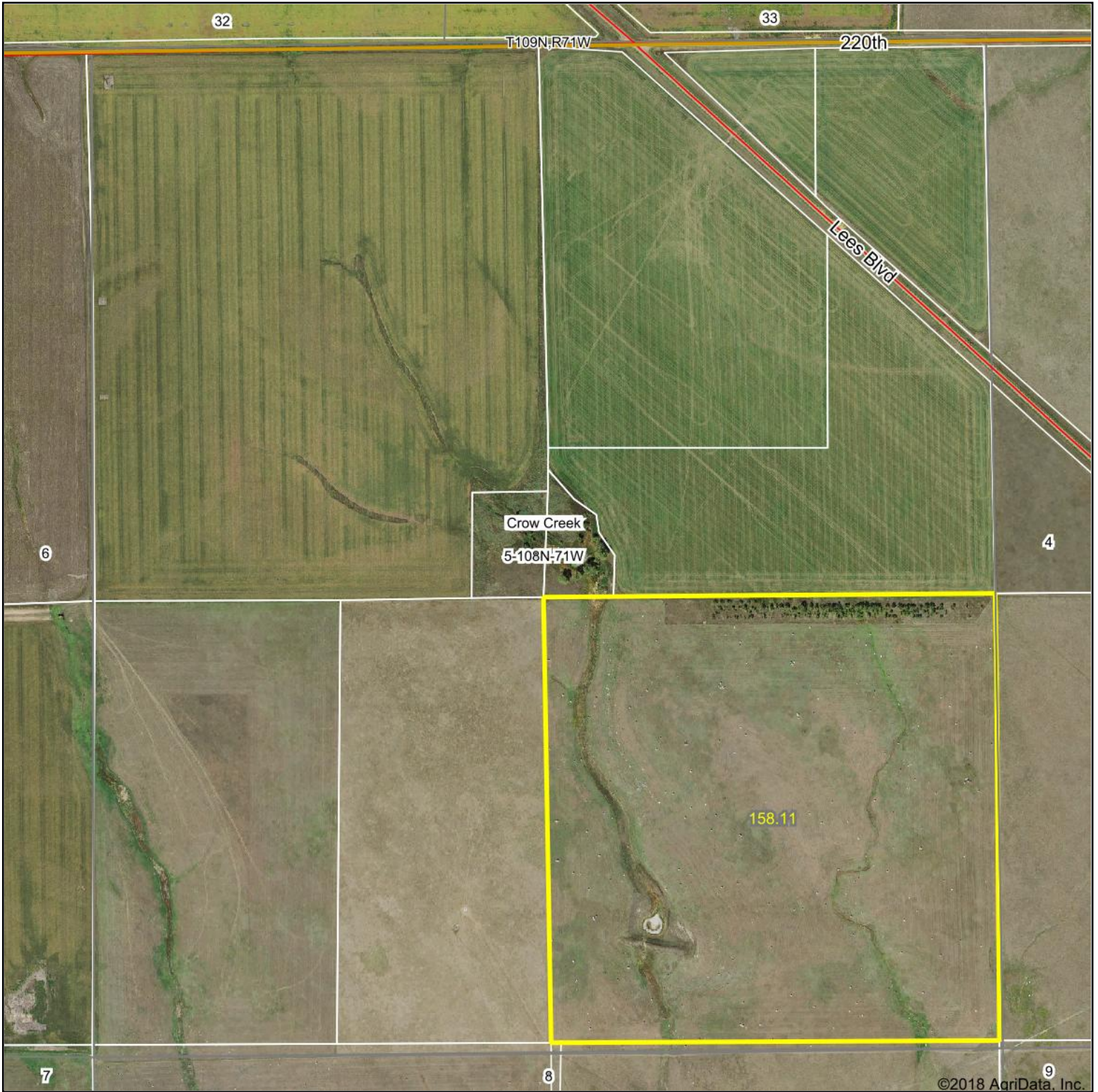


Aerial Map

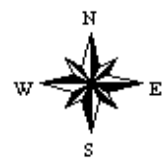


map center: 44° 11' 12.67, -99° 22' 43.34



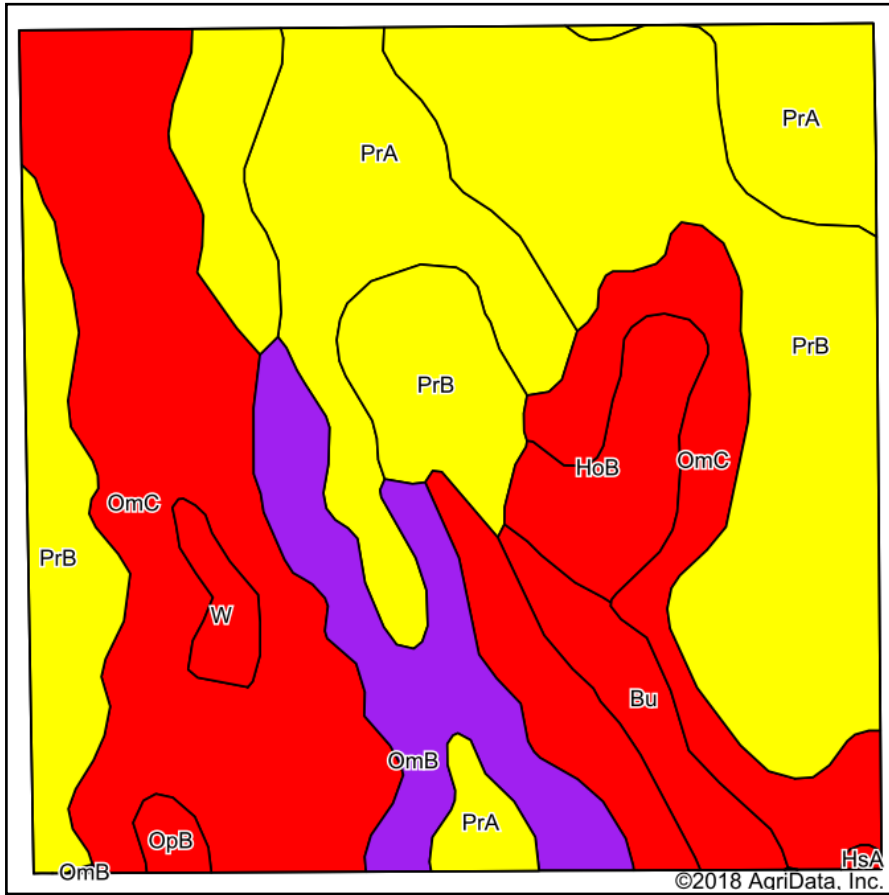
Maps Provided By:
 **surety**[®]
CUSTOMIZED ONLINE MAPPING
© AgriData, Inc. 2018 www.AgriDataInc.com

5-108N-71W
Buffalo County
South Dakota

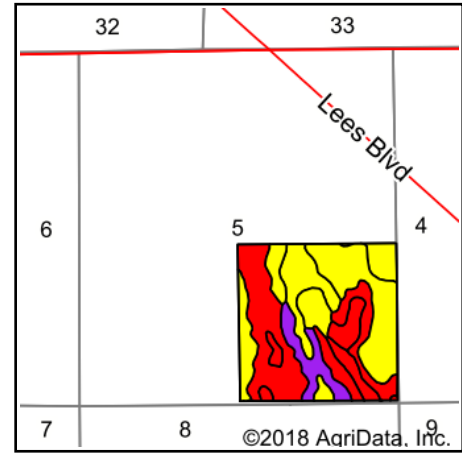


5/14/2018

Soils Map



Soils data provided by USDA and NRCS.



State: **South Dakota**
 County: **Buffalo**
 Location: **5-108N-71W**
 Township: **Crow Creek**
 Acres: **158.11**
 Date: **5/14/2018**

Maps Provided By:

 CUSTOMIZED ONLINE MAPPING
 © AgriData, Inc. 2018 www.AgriDataInc.com



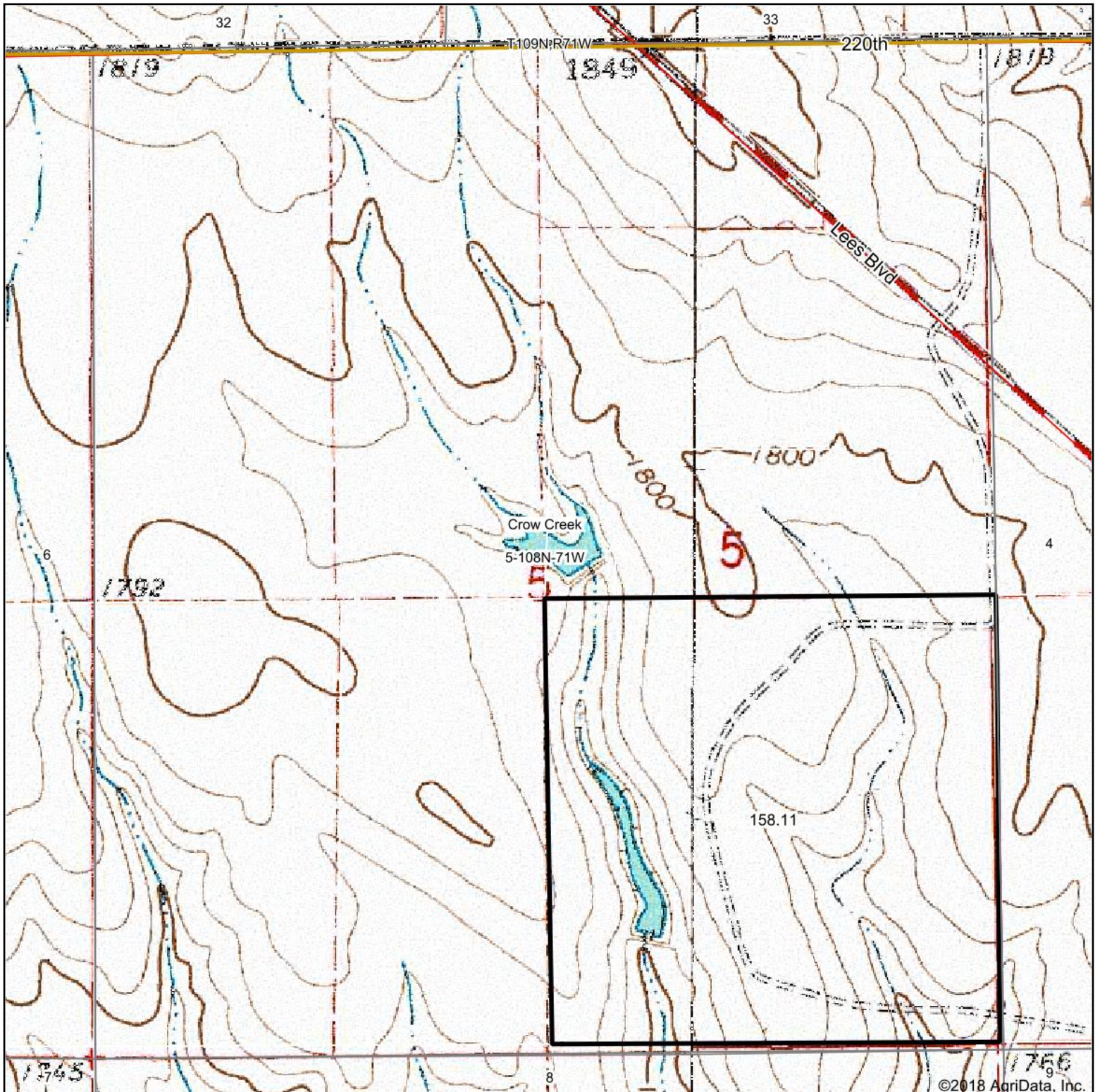
Area Symbol: SD603, Soil Area Version: 21

Code	Soil Description	Acres	Percent of field	PI Legend	Non-Irr Class *c	Irr Class *c	Productivity Index	State Productivity Index	Corn	Grain sorghum	Oats	Winter wheat	Spring wheat	
PrB	Promise clay, 3 to 6 percent slopes	54.53	34.5%		IIle	IIIe	64	45						
OmC	Opal clay, 6 to 9 percent slopes	51.08	32.3%		IVe	IVe	49	35						
PrA	Promise clay, 0 to 3 percent slopes	24.80	15.7%		IIIs	IIIs	68	48						
OmB	Opal clay, 3 to 6 percent slopes	12.86	8.1%		IIIe	IIIe	60	43						
HoB	Hurley silt loam, 0 to 6 percent slopes	6.43	4.1%		VI s		12	9	3	4	5	4	1	
Bu	Bullcreek clay, 0 to 6 percent slopes	5.30	3.4%		VI s	VI s	13	9						
W	Water	1.94	1.2%				0	0						
OpB	Opal clay, saline, 1 to 6 percent slopes	0.99	0.6%		VI s	VI s	46	33						
HsA	Hurley-Slickspots complex, 1 to 4 percent slopes	0.18	0.1%		VI s		10	7	1	1	2	2	1	
Weighted Average							54.7	38.7	0.1	0.2	0.2	0.2	0.2	*-

*c: Using Capabilities Class Dominant Condition Aggregation Method

Soils data provided by USDA and NRCS.

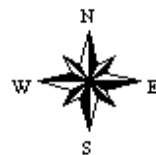
Topography Map



map center: 44° 11' 12.67, -99° 22' 43.34



5-108N-71W
Buffalo County
South Dakota



5/14/2018

Maps Provided By:
 **surety**
CUSTOMIZED ONLINE MAPPING
© AgriData, Inc. 2018 www.AgridataInc.com