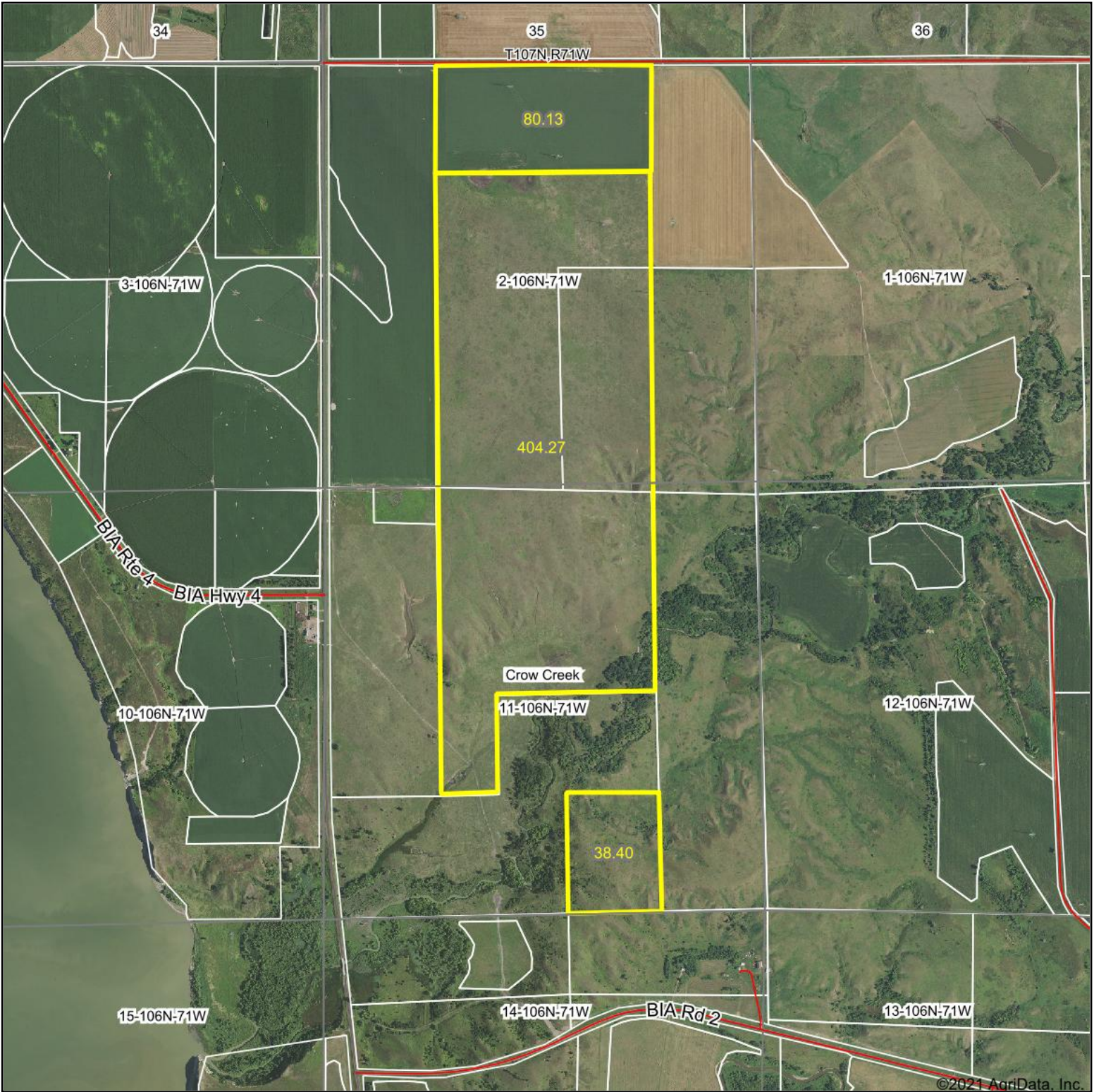
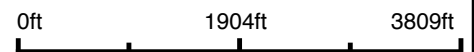


Aerial Map



©2021 AgriData, Inc.

Map Center: 44° 0' 11.81, -99° 19' 0.29



11-106N-71W
Buffalo County
South Dakota



3/3/2021

Maps Provided By:
 **surety**[®]
CUSTOMIZED ONLINE MAPPING
© AgriData, Inc. 2021 www.AgriDataInc.com

Field borders provided by Farm Service Agency as of 5/21/2008.



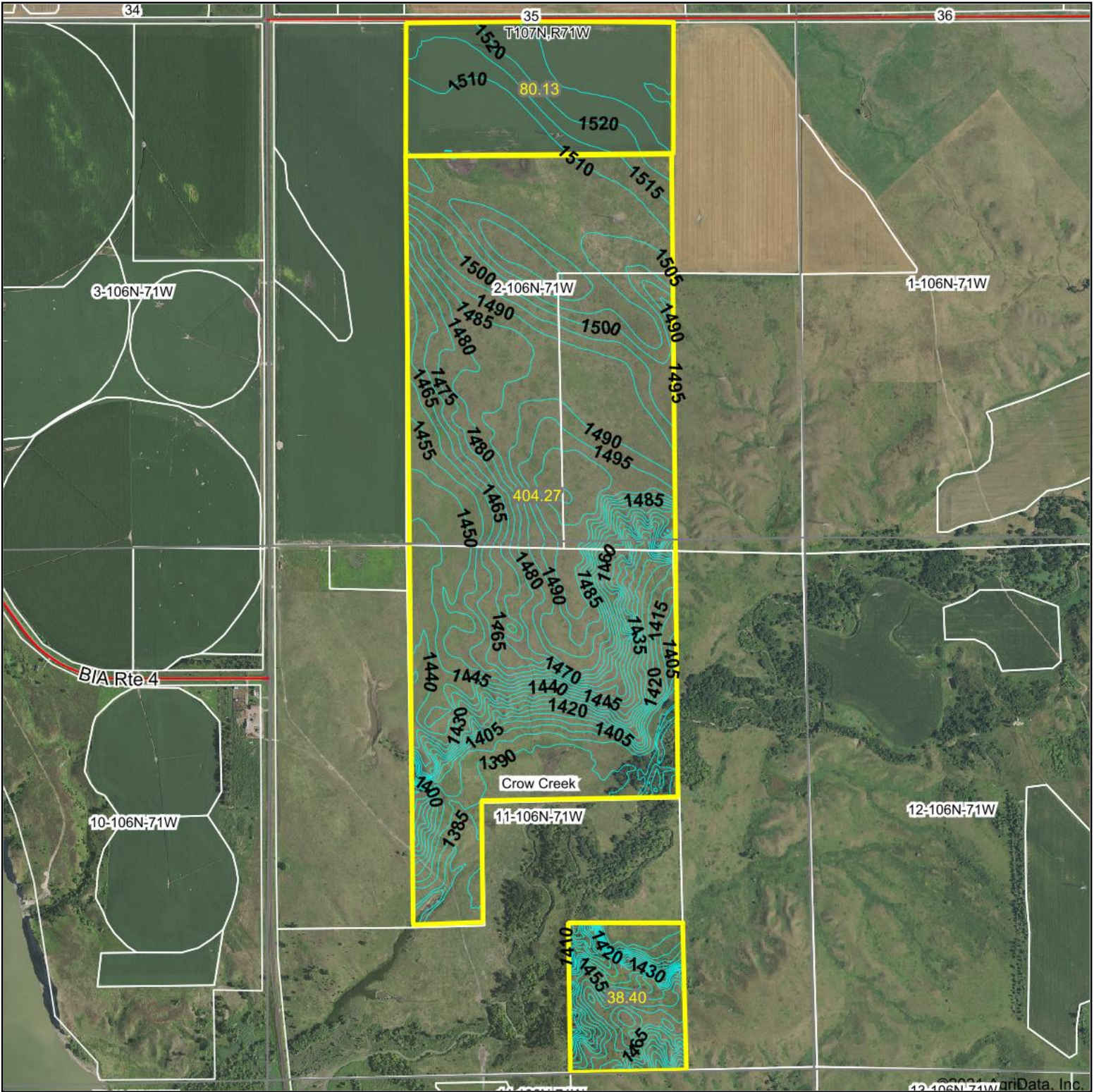
LvB	Lowry variant silt loam, 2 to 6 percent slopes	15.26	2.9%		Ile		85	1.5	3	30	34	41				
SaE	Sansarc-Opal clays, 9 to 25 percent slopes	15.24	2.9%		Vlle	Vlle	21									
OdB	Oahe-Delmont loams, 2 to 6 percent slopes	8.01	1.5%		Ille		46									
We	Wendte silty clay, channeled	7.50	1.4%		Vlw		32									2.5
Bo	Bon loam, channeled, 0 to 2 percent slopes, frequently flooded	6.55	1.3%		Vlw		34									
MoA	Mobridge silt loam, 0 to 2 percent slopes	0.71	0.1%		Ilc		94									
SdF	Sully silt loam, 25 to 40 percent slopes	0.08	0.0%		Vlle		5									
Weighted Average							67.7	0.9	0.4	14.6	14.1	6.1	1	0.8	*-	

*n: The aggregation method is "Weighted Average using all components"

*c: Using Capabilities Class Dominant Condition Aggregation Method

Soils data provided by USDA and NRCS.

Topography Contours



Source: USGS 10 meter dem

Interval(ft): 5.0

Min: 1,370.6

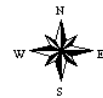
Max: 1,530.6

Range: 160.0

Average: 1,472.1

Standard Deviation: 41.08 ft

0ft 1538ft 3076ft



3/3/2021

11-106N-71W
Buffalo County
South Dakota

Map Center: 44° 0' 11.81, -99° 19' 0.29

Maps Provided By:



© AgriData, Inc. 2021 www.AgriDataInc.com

Field borders provided by Farm Service Agency as of 5/21/2008.