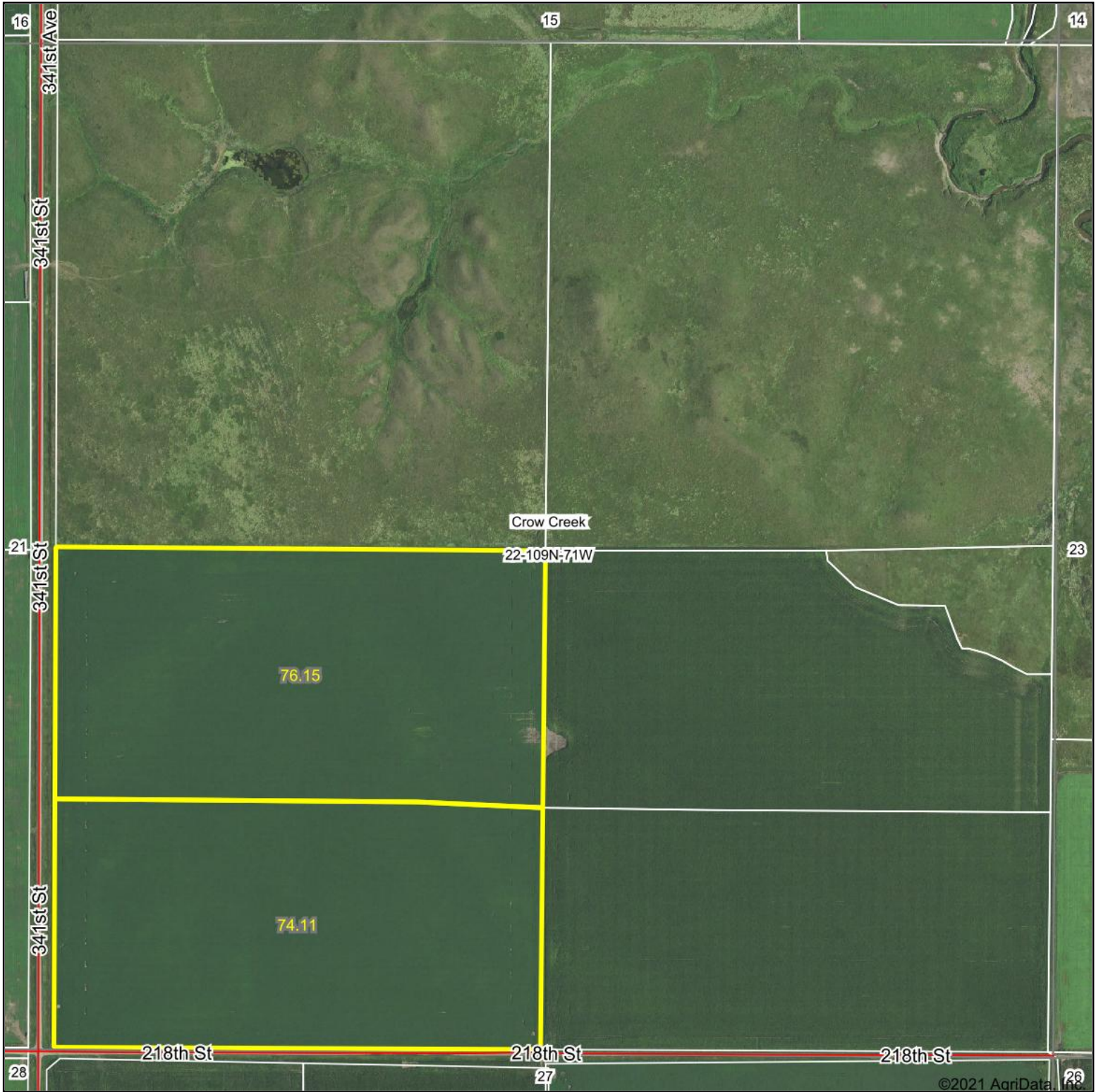


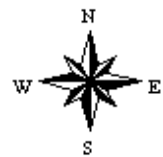
Aerial Map



Map Center: 44° 13' 52.54, -99° 21' 1.75



22-109N-71W
Hyde County
South Dakota



2/22/2021

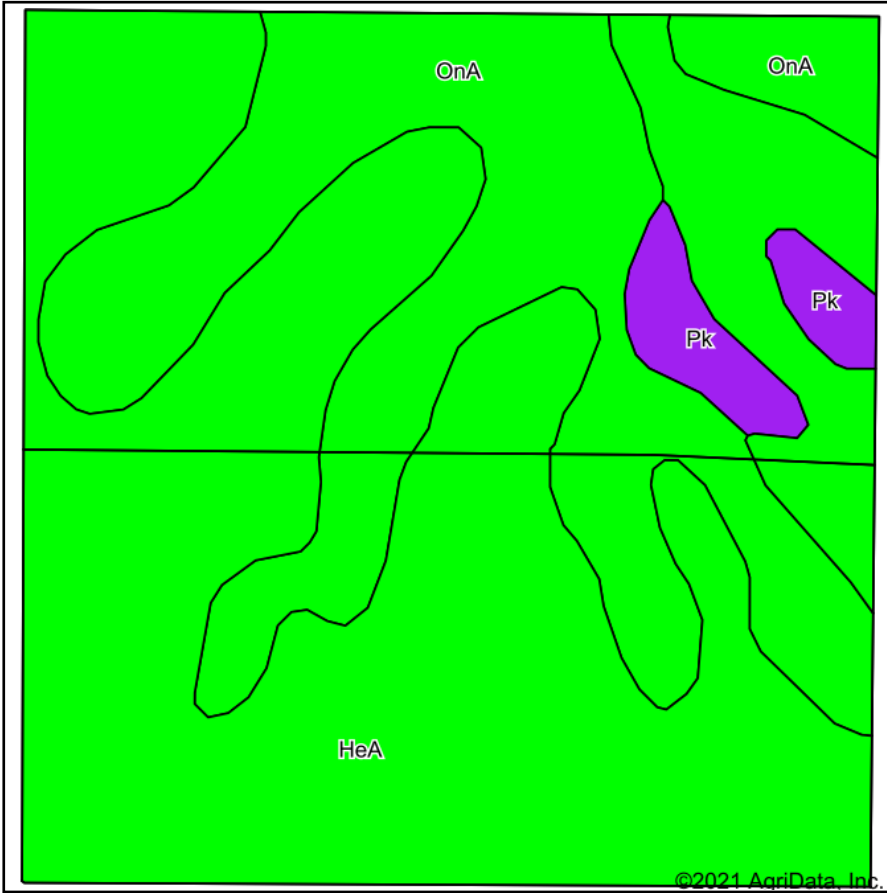
Maps Provided By:



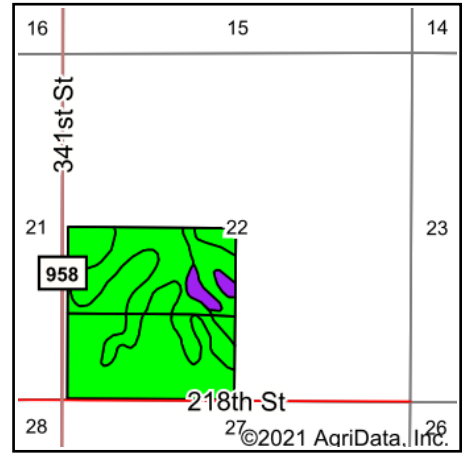
© AgriData, Inc. 2021 www.AgriDataInc.com

Field borders provided by Farm Service Agency as of 5/21/2008.

Soils Map



Soils data provided by USDA and NRCS.



State: **South Dakota**
 County: **Hyde**
 Location: **22-109N-71W**
 Township: **Crow Creek**
 Acres: **150.26**
 Date: **2/22/2021**

Maps Provided By:



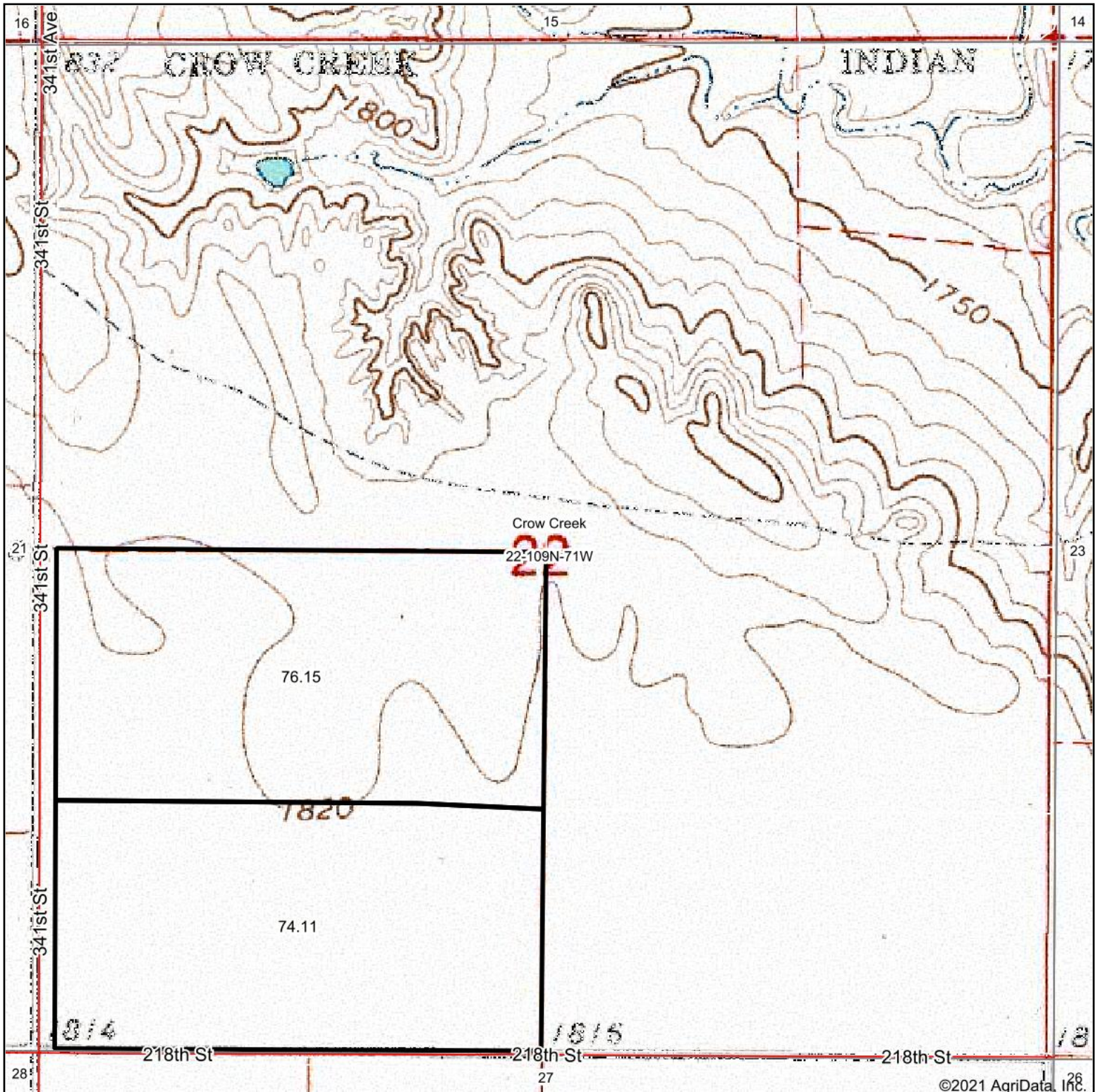
Code	Soil Description	Acres	Percent of field	PI Legend	Non-Irr Class *c	Productivity Index	Alfalfa hay	Brome grass alfalfa	Corn	Oats	Spring wheat	Winter wheat	*n NCCPI Soybeans
HeA	Highmore silt loam, 0 to 2 percent slopes	96.97	64.5%		IIc	92							57
OnA	Mobridge silt loam, 0 to 2 percent slopes	47.87	31.9%		IIc	94							59
Pk	Plankinton silt loam	5.42	3.6%		IVw	51	0.3	0.5	20	20	15	18	14
Weighted Average						91.2	*.	*.	0.7	0.7	0.5	0.6	*n 56.1

*n: The aggregation method is "Weighted Average using all components"

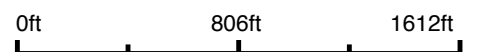
*c: Using Capabilities Class Dominant Condition Aggregation Method

Soils data provided by USDA and NRCS.

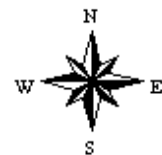
Topography Map



map center: 44° 13' 52.54, -99° 21' 1.75



22-109N-71W
Hyde County
South Dakota



2/22/2021

Maps Provided By:

CUSTOMIZED ONLINE MAPPING
© AgriData, Inc. 2021 www.AgriDataInc.com