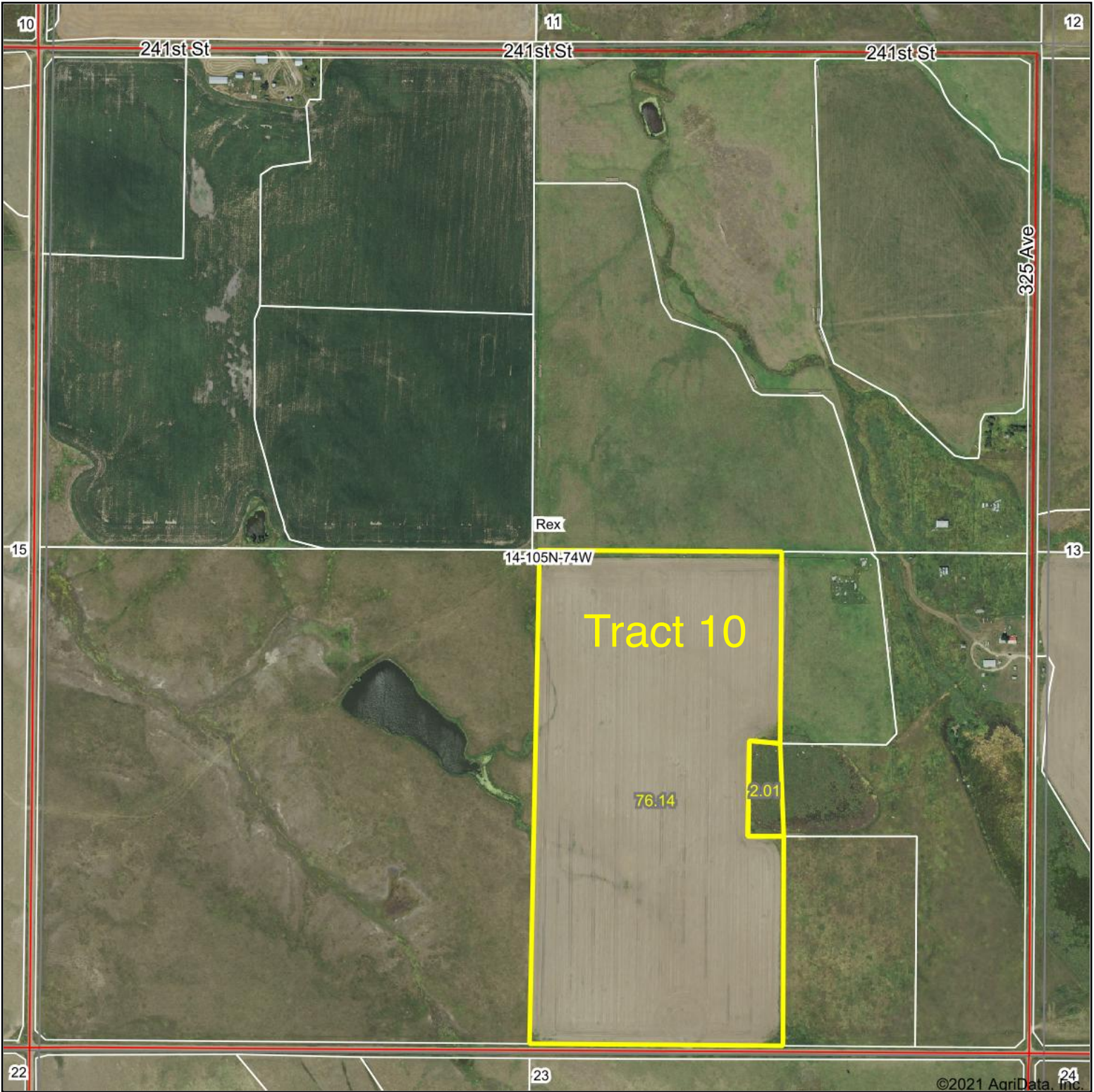
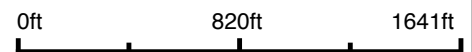


Aerial Map



©2021 AgriData, Inc.

Map Center: 43° 53' 53.11, -99° 40' 31.53



14-105N-74W
Lyman County
South Dakota

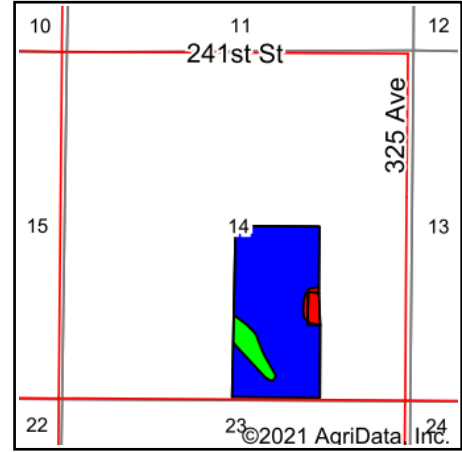
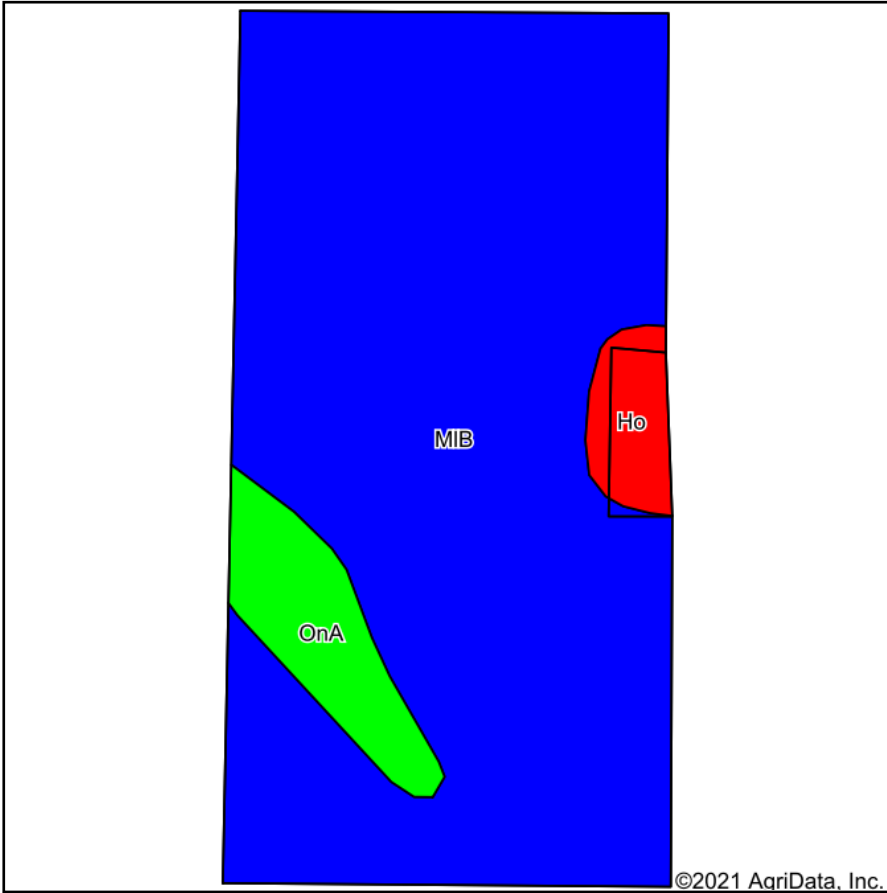


11/18/2021

Maps Provided By:
 **surety**[®]
CUSTOMIZED ONLINE MAPPING
© AgriData, Inc. 2021 www.AgriDataInc.com

Field borders provided by Farm Service Agency as of 5/21/2008.

Soils Map



State: **South Dakota**
 County: **Lyman**
 Location: **14-105N-74W**
 Township: **Rex**
 Acres: **78.15**
 Date: **11/18/2021**




Maps Provided By:

 CUSTOMIZED ONLINE MAPPING
 © AgriData, Inc. 2021 www.AgriDataInc.com



Soils data provided by USDA and NRCS.

Area Symbol: SD085, Soil Area Version: 22

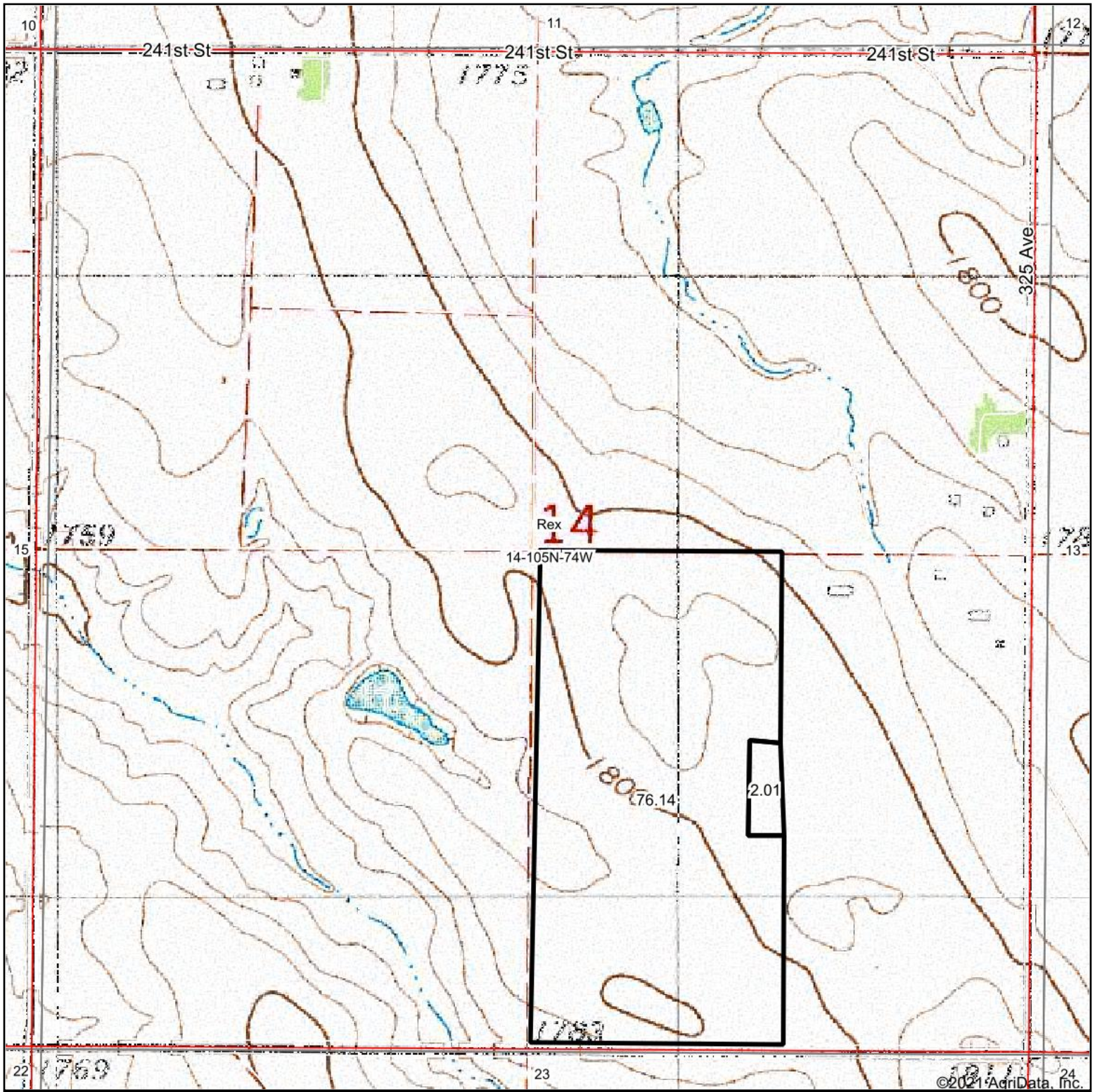
Code	Soil Description	Acres	Percent of field	PI Legend	Non-Irr Class *c	Irr Class *c	Productivity Index	Corn Bu	Grain sorghum Bu	Oats Bu	Spring wheat Bu	Winter wheat Bu	*n NCCPI Soybeans
MIB	Millboro silty clay loam, 3 to 6 percent slopes	69.68	89.2%		Ile	Ile	82						33
OnA	Onita silt loam, 0 to 2 percent slopes	5.71	7.3%		Ilc	Ile	93						57
Ho	Hoven silt loam	2.76	3.5%		VIs		15	3	4	4	2	2	7
Weighted Average					2.14	1.86	80.4	0.1	0.1	0.1	0.1	0.1	*n 33.8

*n: The aggregation method is "Weighted Average using all components"

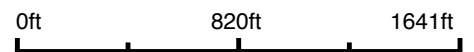
*c: Using Capabilities Class Dominant Condition Aggregation Method

Soils data provided by USDA and NRCS.

Topography Map



map center: 43° 53' 53.11, -99° 40' 31.53



14-105N-74W
Lyman County
South Dakota



11/18/2021

Maps Provided By:

CUSTOMIZED ONLINE MAPPING
© AgriData, Inc. 2021 www.AgriDataInc.com