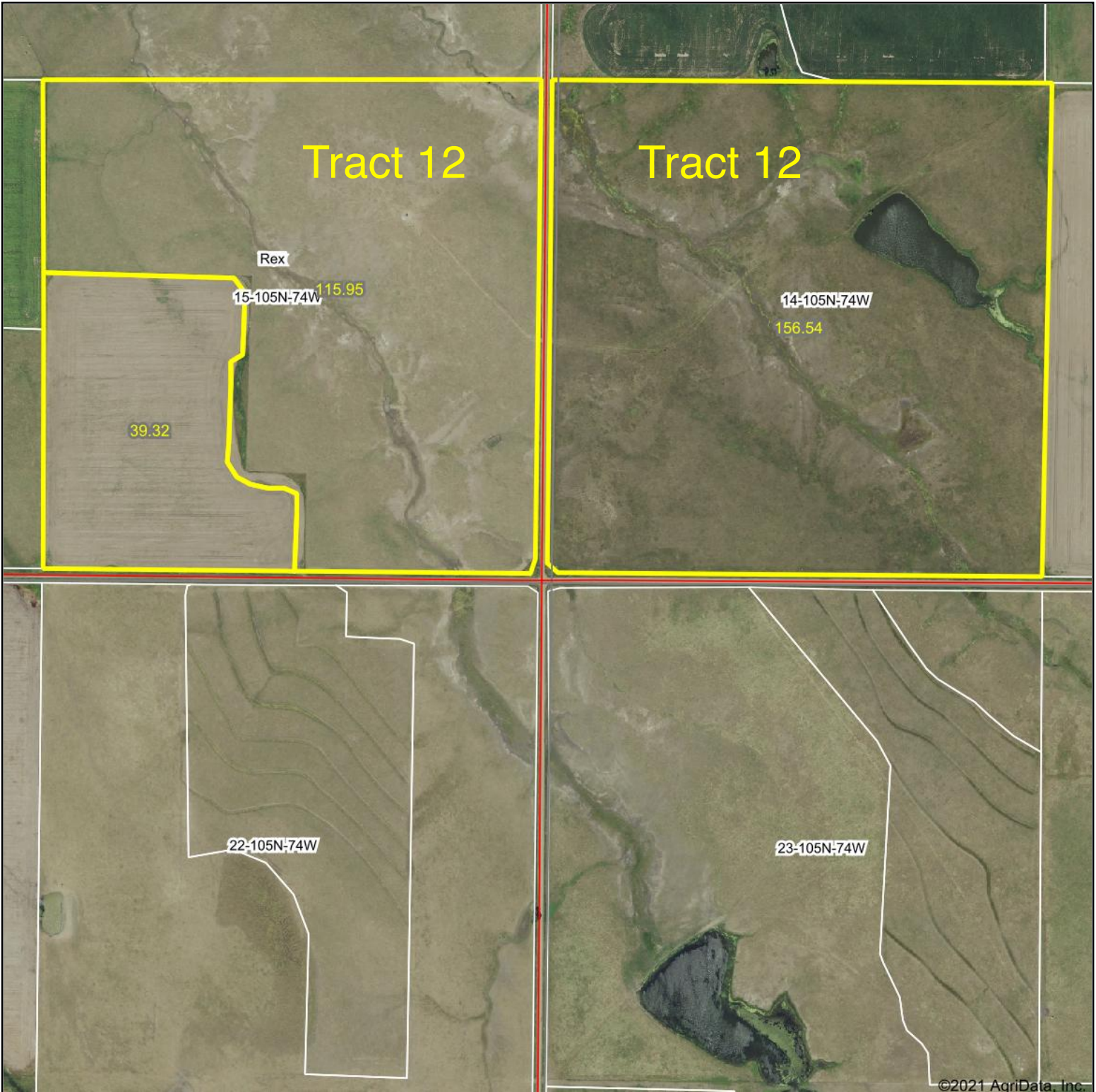
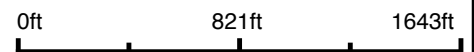


Aerial Map



Map Center: 43° 53' 28.51, -99° 41' 8.11

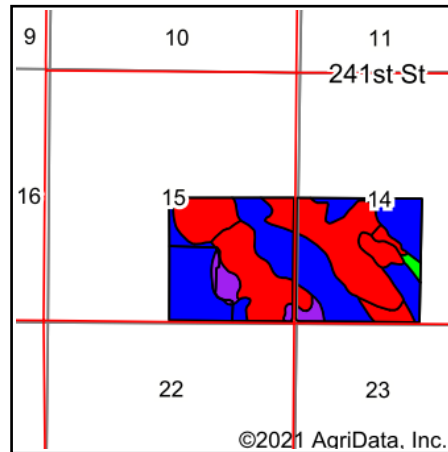
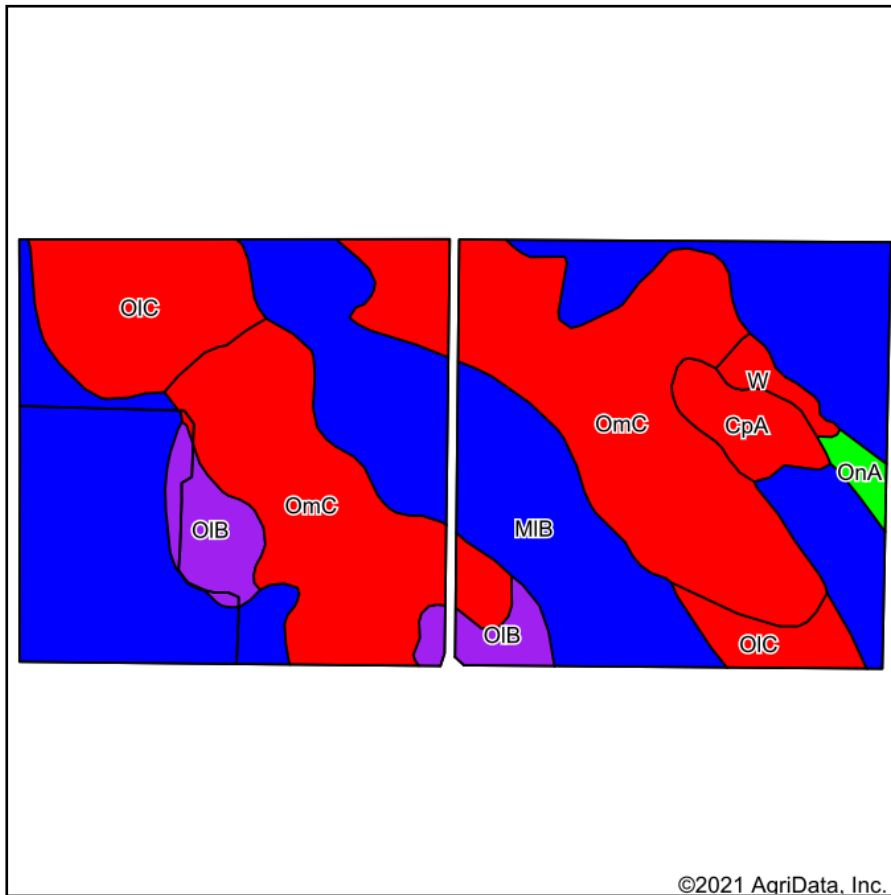


15-105N-74W
Lyman County
South Dakota



11/18/2021

Soils Map



State: **South Dakota**
 County: **Lyman**
 Location: **15-105N-74W**
 Township: **Rex**
 Acres: **311.81**
 Date: **11/18/2021**

©2021 AgriData, Inc.

Maps Provided By:

 CUSTOMIZED ONLINE MAPPING
 © AgriData, Inc. 2021 www.AgriDataInc.com



Soils data provided by USDA and NRCS.

Area Symbol: SD085, Soil Area Version: 22

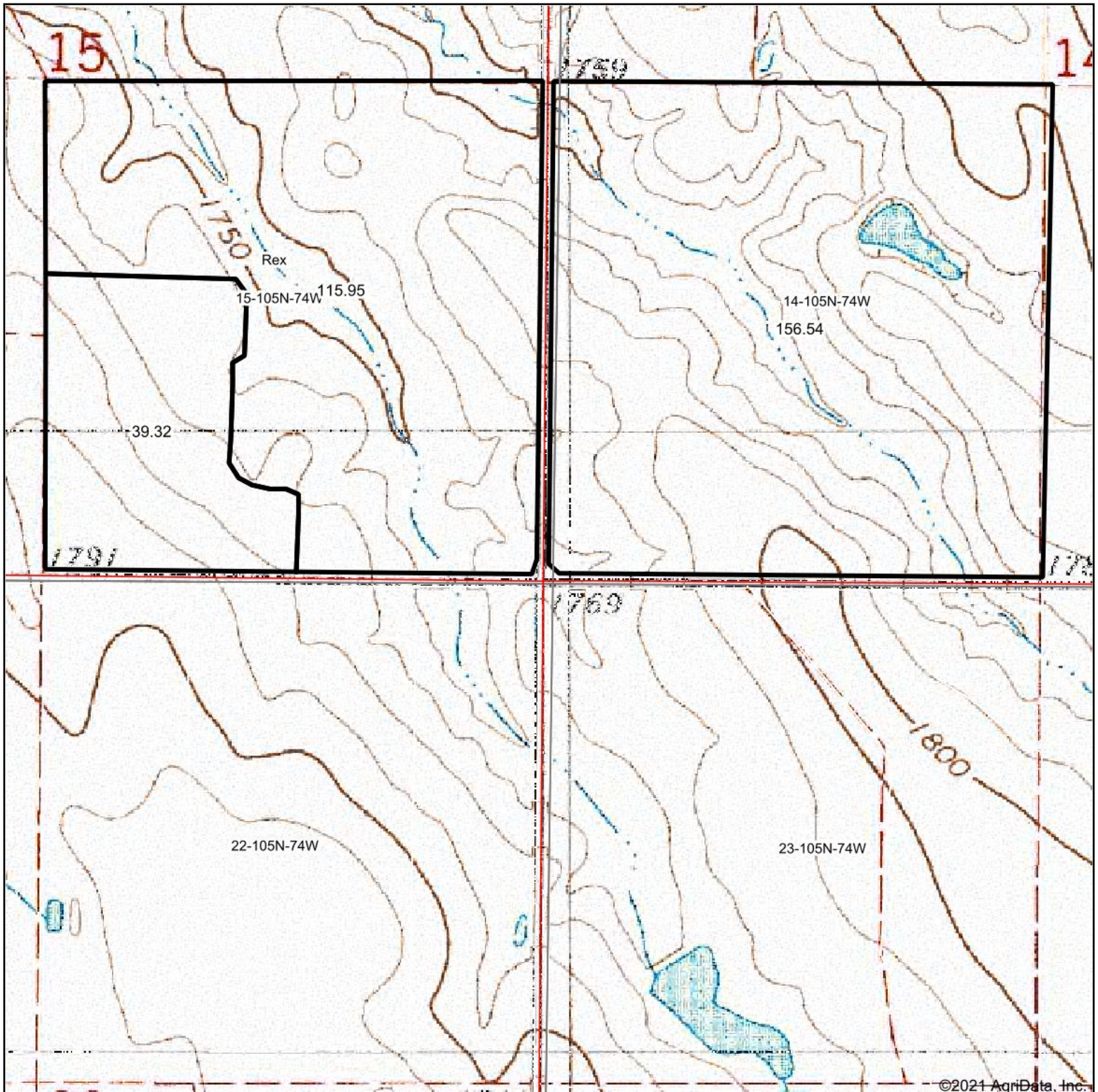
| Code | Soil Description | Acres | Percent of field | PI Legend | Non-Irr Class *c | Irr Class *c | Productivity Index | Alfalfa hay Tons | Corn Bu | Grain sorghum Bu | Oats Bu | Spring wheat Bu | Tall wheatgrass AUM | Winter wheat Bu | *n NCCPI Soybeans |
|-------------------------|---|--------|------------------|-----------|------------------|--------------|--------------------|------------------|------------|------------------|-------------|-----------------|---------------------|-----------------|-------------------|
| MIB | Millboro silty clay loam, 3 to 6 percent slopes | 141.42 | 45.4% | | Ile | Ile | 82 | | | | | | | | 33 |
| OmC | Opal-Chantier clays, 2 to 9 percent slope | 109.08 | 35.0% | | IVe | | 29 | 1.3 | 21 | 24 | 33 | 17 | 2.2 | 26 | 16 |
| OIC | Opal clay, 6 to 9 percent slopes | 31.76 | 10.2% | | IVe | IVe | 49 | | | | | | | | 19 |
| OIB | Opal clay, 3 to 6 percent slopes | 14.99 | 4.8% | | IIIe | IIIe | 60 | | | | | | | | 20 |
| CpA | Capa silt loam, 0 to 6 percent slopes | 8.74 | 2.8% | | VIIs | VIIs | 11 | | | | | | | | 14 |
| W | Water | 3.24 | 1.0% | | VIII | | 0 | | | | | | | | |
| OnA | Onita silt loam, 0 to 2 percent slopes | 2.58 | 0.8% | | IIc | Ie | 93 | | | | | | | | 57 |
| Weighted Average | | | | | 3.13 | 1.64 | 56.3 | 0.5 | 7.3 | 8.4 | 11.5 | 5.9 | 0.8 | 9.1 | *n 24.3 |

*n: The aggregation method is "Weighted Average using all components"

*c: Using Capabilities Class Dominant Condition Aggregation Method

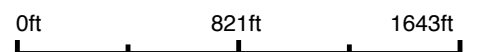
Soils data provided by USDA and NRCS.

Topography Map

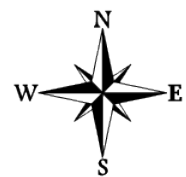


©2021 AgriData, Inc.

map center: 43° 53' 28.51, -99° 41' 8.11



15-105N-74W
Lyman County
South Dakota



11/18/2021

Maps Provided By:



© AgriData, Inc. 2021 www.AgriDataInc.com