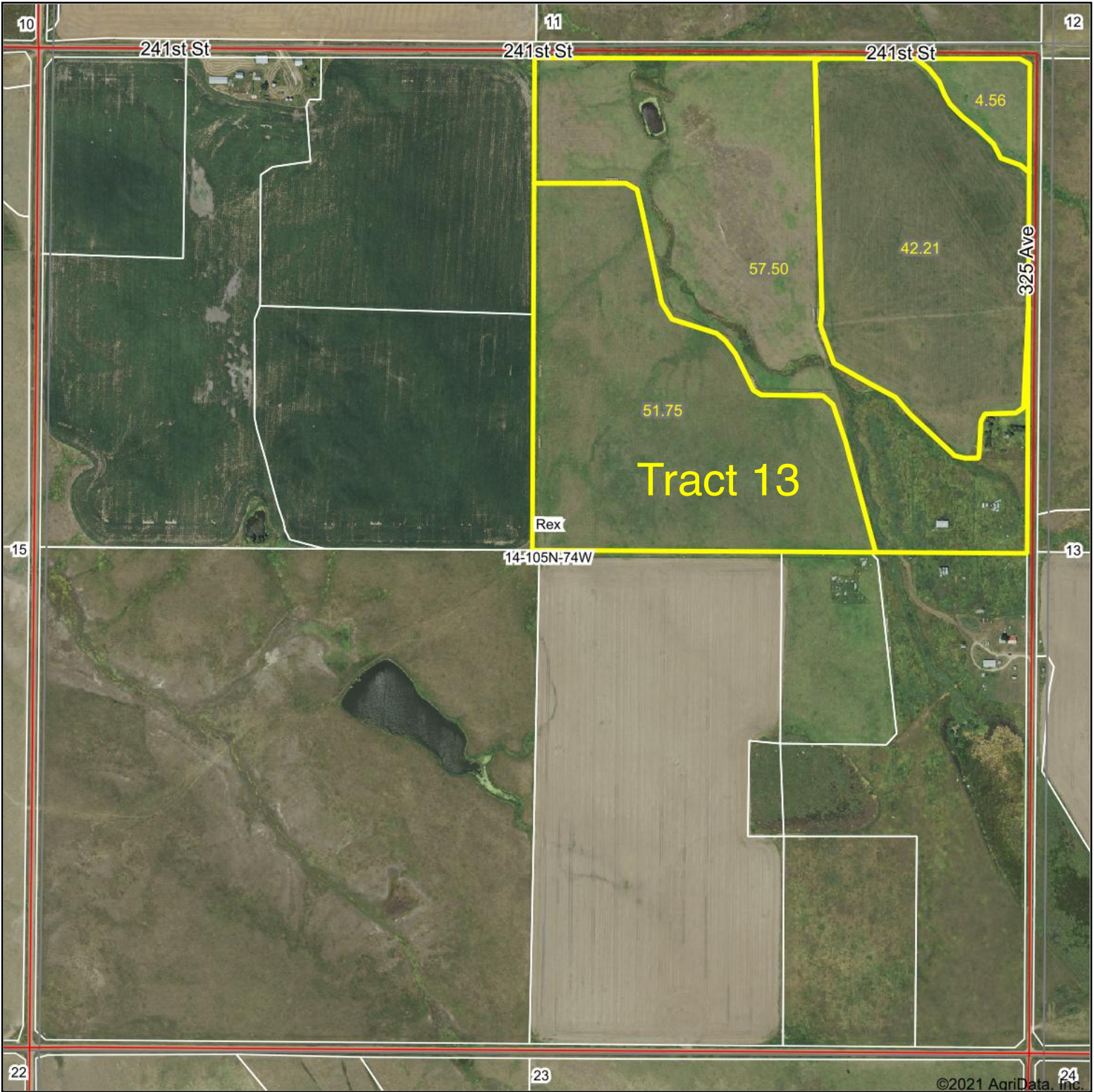
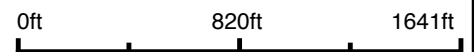


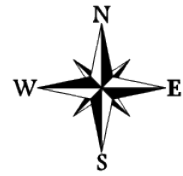
Aerial Map



Map Center: 43° 53' 53.11, -99° 40' 31.53



14-105N-74W
Lyman County
South Dakota

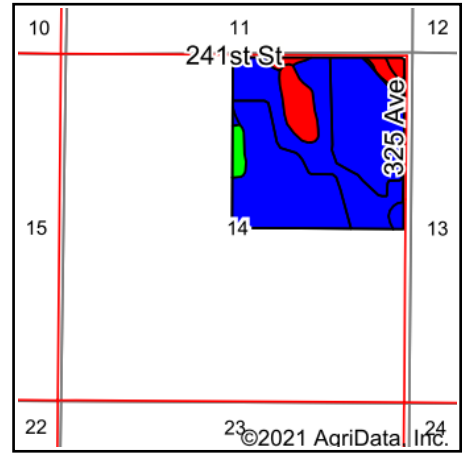
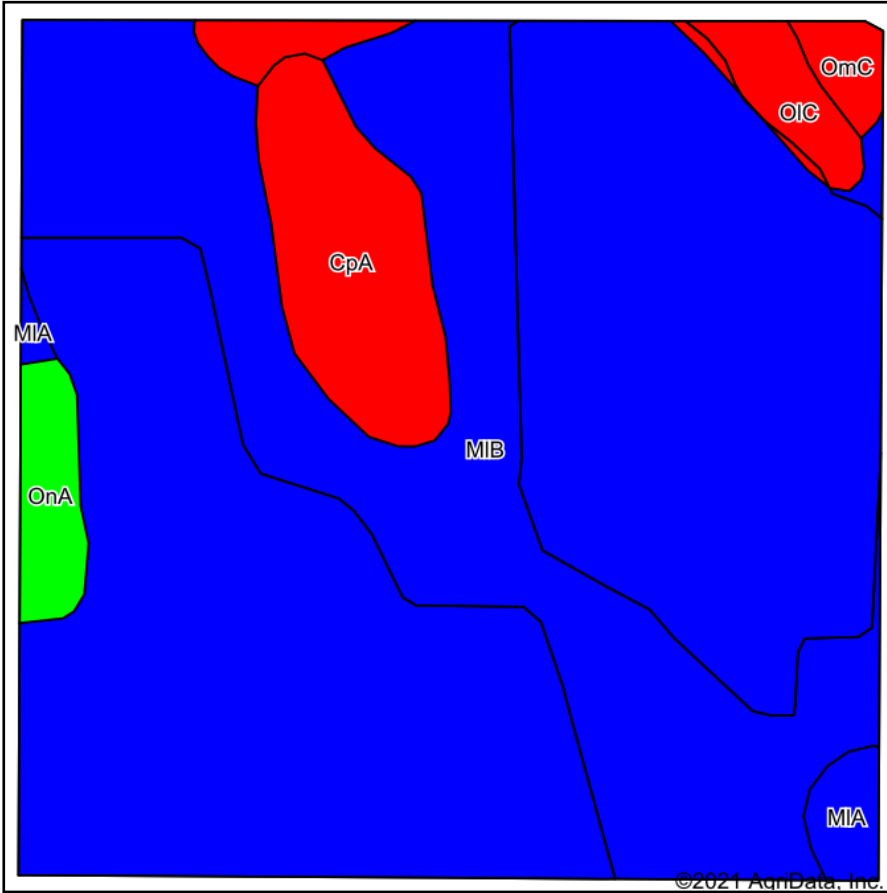


11/18/2021

Maps Provided By:
 **surety**[®]
CUSTOMIZED ONLINE MAPPING
© AgriData, Inc. 2021 www.AgriDataInc.com

Field borders provided by Farm Service Agency as of 5/21/2008.

Soils Map



State: **South Dakota**
 County: **Lyman**
 Location: **14-105N-74W**
 Township: **Rex**
 Acres: **156.02**
 Date: **11/18/2021**

Maps Provided By:

 CUSTOMIZED ONLINE MAPPING
 © AgriData, Inc. 2021 www.AgriDataInc.com



Area Symbol: SD085, Soil Area Version: 22

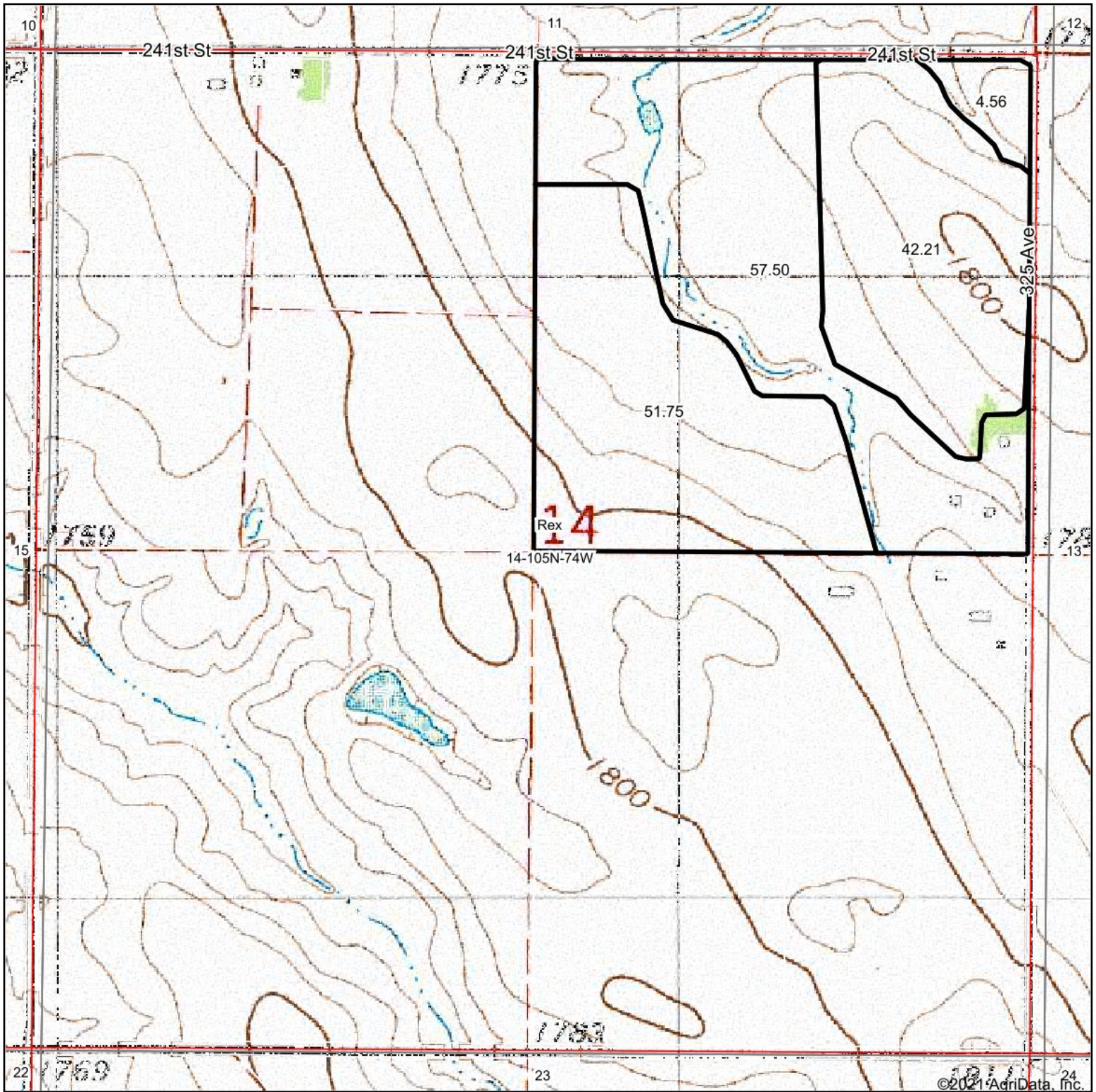
Code	Soil Description	Acres	Percent of field	PI Legend	Non-Irr Class *c	Irr Class *c	Productivity Index	Alfalfa hay Tons	Corn Bu	Grain sorghum Bu	Oats Bu	Spring wheat Bu	Tall wheatgrass AUM	Winter wheat Bu	*n NCCPI Soybeans
MIB	Millboro silty clay loam, 3 to 6 percent slopes	134.29	86.1%		Ile	Ile	82								33
CpA	Capa silt loam, 0 to 6 percent slopes	10.39	6.7%		Vls	Vls	11								14
OIC	Opal clay, 6 to 9 percent slopes	4.54	2.9%		IVe	IVe	49								19
OnA	Onita silt loam, 0 to 2 percent slopes	3.26	2.1%		Ilc	Ile	93								57
MIA	Millboro silty clay loam, 0 to 3 percent slopes	2.07	1.3%		Ils	Ils	89								34
OmC	Opal-Chantier clays, 2 to 9 percent slope	1.47	0.9%		IVe		29	1.3	21	24	33	17	2.2	26	16
Weighted Average					2.34	2.28	76.1	*-	0.2	0.2	0.3	0.2	*-	0.2	*n 31.7

*n: The aggregation method is "Weighted Average using all components"

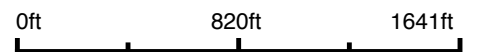
*c: Using Capabilities Class Dominant Condition Aggregation Method

Soils data provided by USDA and NRCS.

Topography Map



map center: 43° 53' 53.11, -99° 40' 31.53



14-105N-74W
Lyman County
South Dakota



11/18/2021

Maps Provided By:
 **surety**[®]
CUSTOMIZED ONLINE MAPPING
© AgriData, Inc. 2021 www.AgriDataInc.com