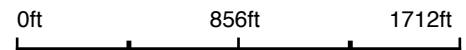


Aerial Map

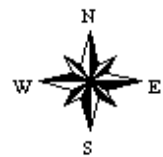


©2021 AgriData, Inc.

Map Center: 43° 50' 23.95, -99° 36' 53.66



6-104N-73W
Lyman County
South Dakota



6/8/2021

Maps Provided By:

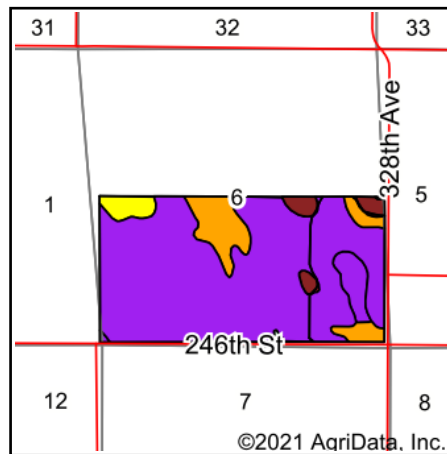
CUSTOMIZED ONLINE MAPPING
© AgriData, Inc. 2021 www.AgriDataInc.com

Field borders provided by Farm Service Agency as of 5/21/2008.

Soils Map



Soils data provided by USDA and NRCS.



State: **South Dakota**
 County: **Lyman**
 Location: **6-104N-73W**
 Township: **Butte**
 Acres: **302.21**
 Date: **6/8/2021**

Maps Provided By:

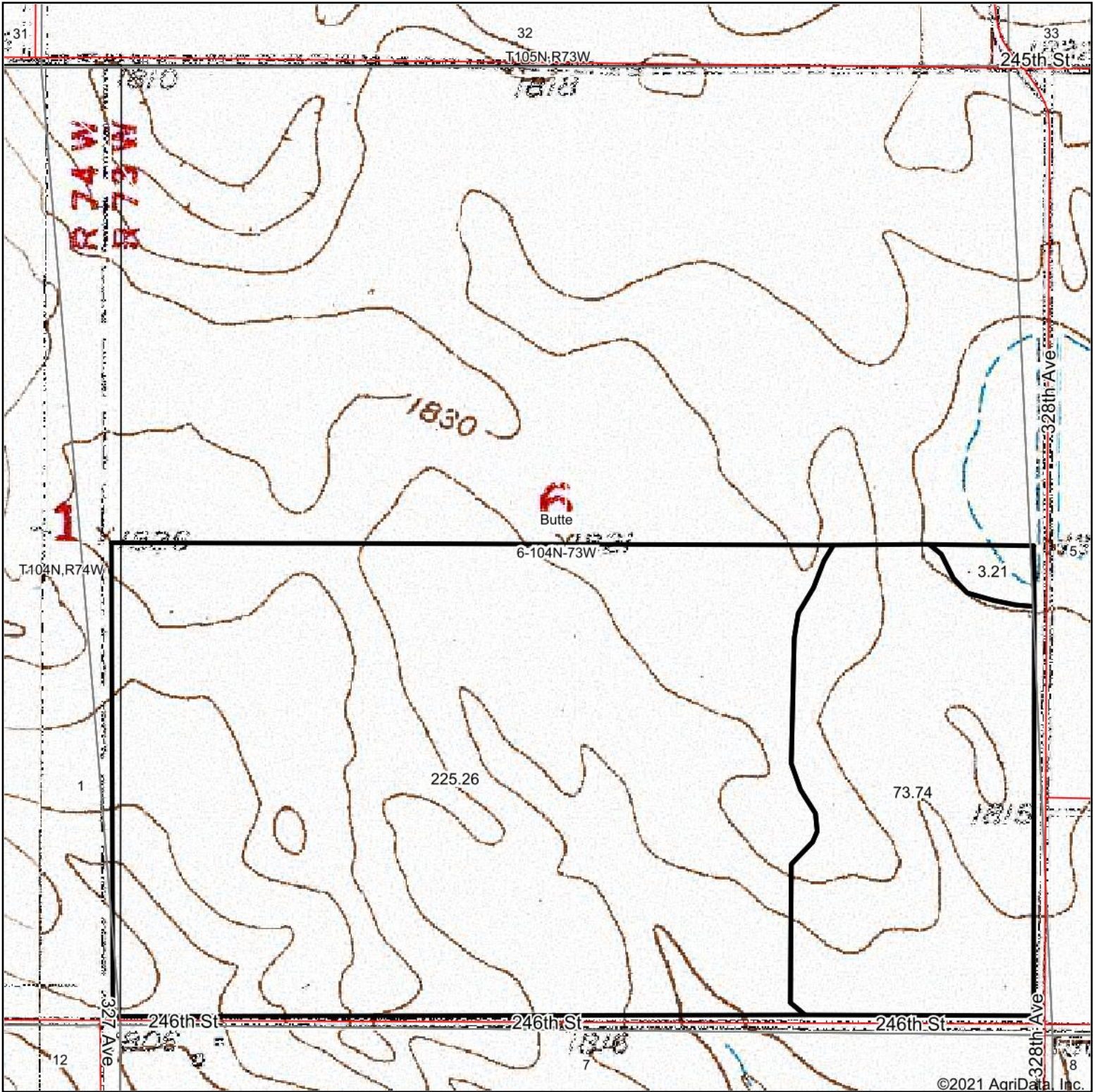


Area Symbol: SD085, Soil Area Version: 21

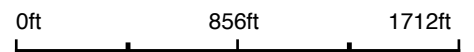
Code	Soil Description	Acres	Percent of field	PI Legend	Non-Irr Class *c	Irr Class *c	Productivity Index
MIB	Millboro silty clay loam, 3 to 6 percent slopes	241.88	80.0%		Ile	Ile	82
CeA	Carter silt loam, 0 to 3 percent slopes	30.28	10.0%		IVs	IVs	39
MIA	Millboro silty clay loam, 0 to 3 percent slopes	11.55	3.8%		Ils	Ils	89
Ho	Hoven silt loam	9.56	3.2%		Vis		15
Ko	Kolls silty clay	8.29	2.7%		Vw	Vw	30
W	Water	0.51	0.2%		VIII		0
Kp	Kolls silty clay, ponded	0.14	0.0%		VIIIw		10
Weighted Average							74.2

*c: Using Capabilities Class Dominant Condition Aggregation Method
 Soils data provided by USDA and NRCS.

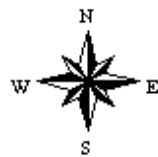
Topography Map



map center: 43° 50' 23.95, -99° 36' 53.66



6-104N-73W
Lyman County
South Dakota



6/8/2021

Maps Provided By:



© AgriData, Inc. 2021 www.AgriDataInc.com