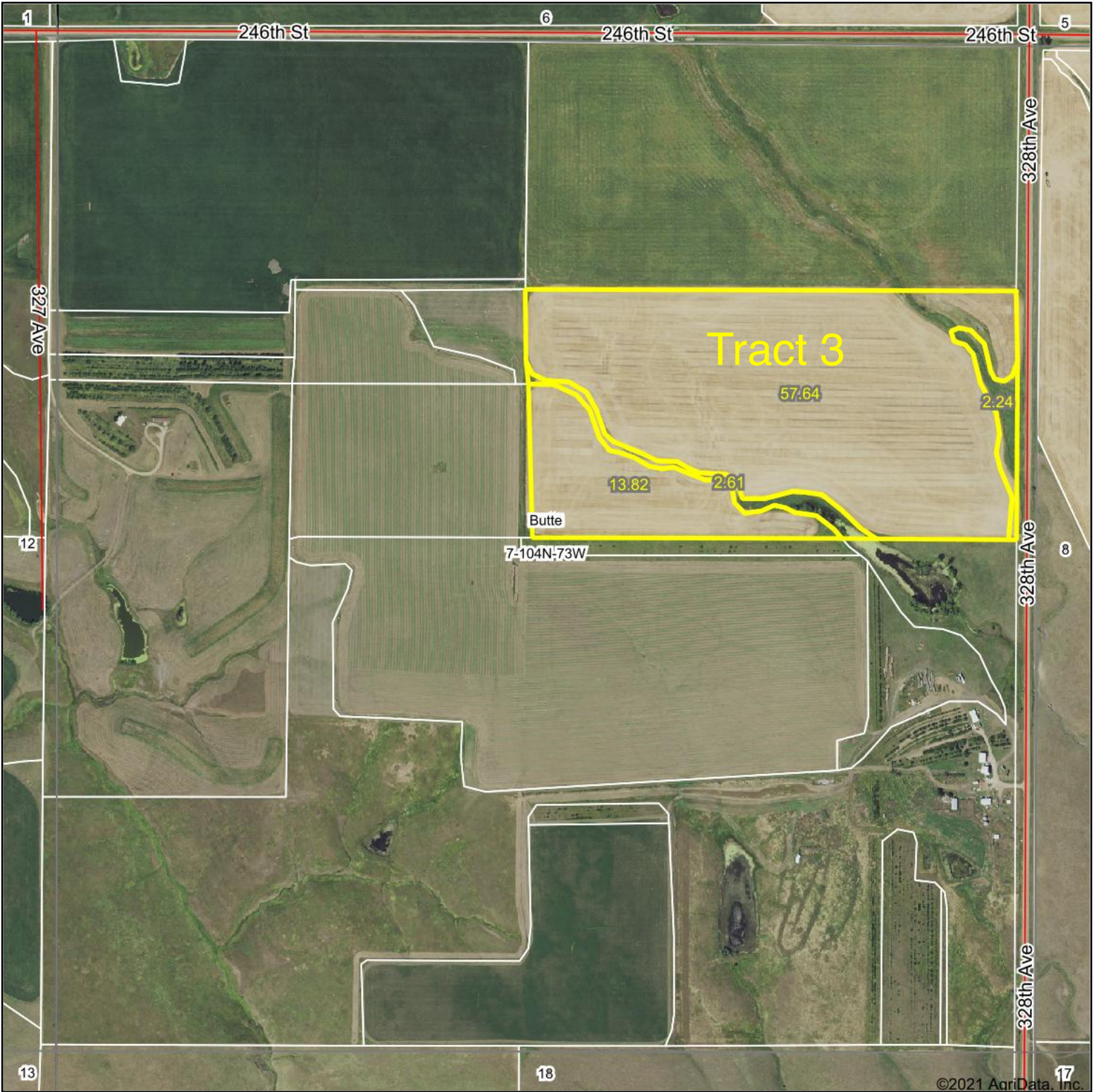
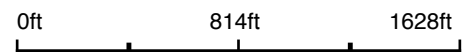


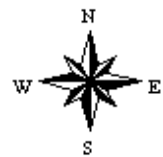
Aerial Map



Map Center: 43° 49' 31.52, -99° 36' 50.26



7-104N-73W
Lyman County
South Dakota

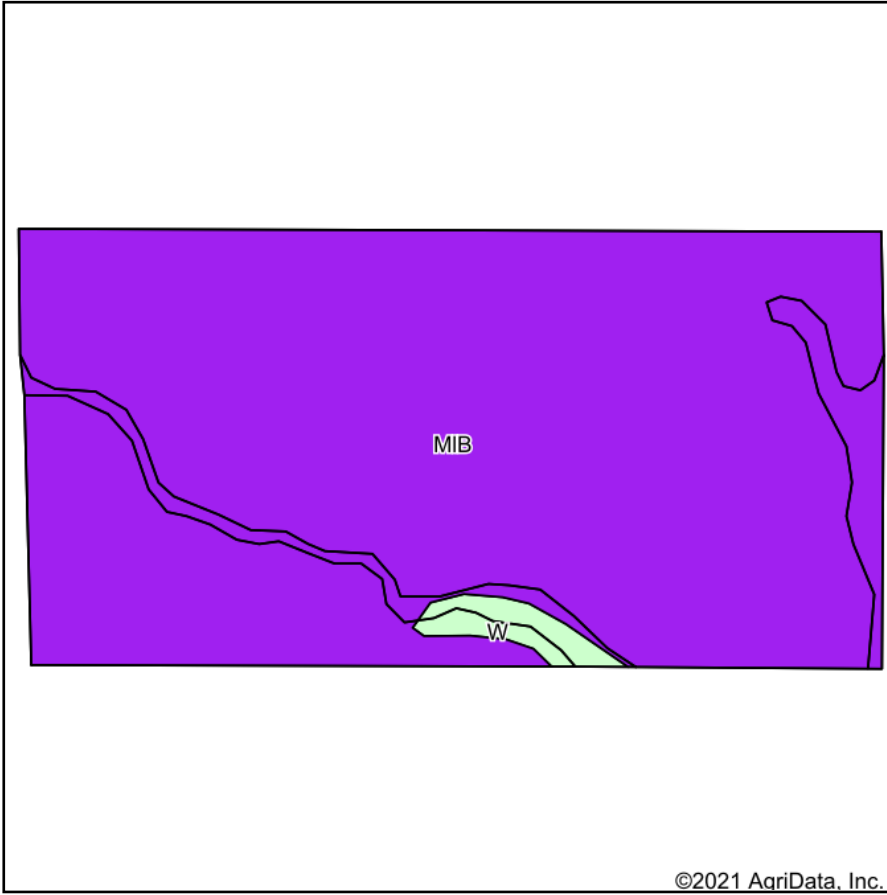


6/8/2021

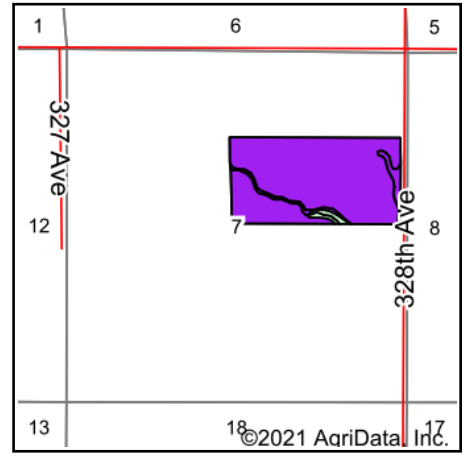
Maps Provided By:
 **surety**[®]
CUSTOMIZED ONLINE MAPPING
© AgriData, Inc. 2021 www.AgriDataInc.com

Field borders provided by Farm Service Agency as of 5/21/2008.

Soils Map



Soils data provided by USDA and NRCS.





State: **South Dakota**
 County: **Lyman**
 Location: **7-104N-73W**
 Township: **Butte**
 Acres: **76.31**
 Date: **6/8/2021**

Maps Provided By:

 CUSTOMIZED ONLINE MAPPING
 © AgriData, Inc. 2021 www.AgriDataInc.com

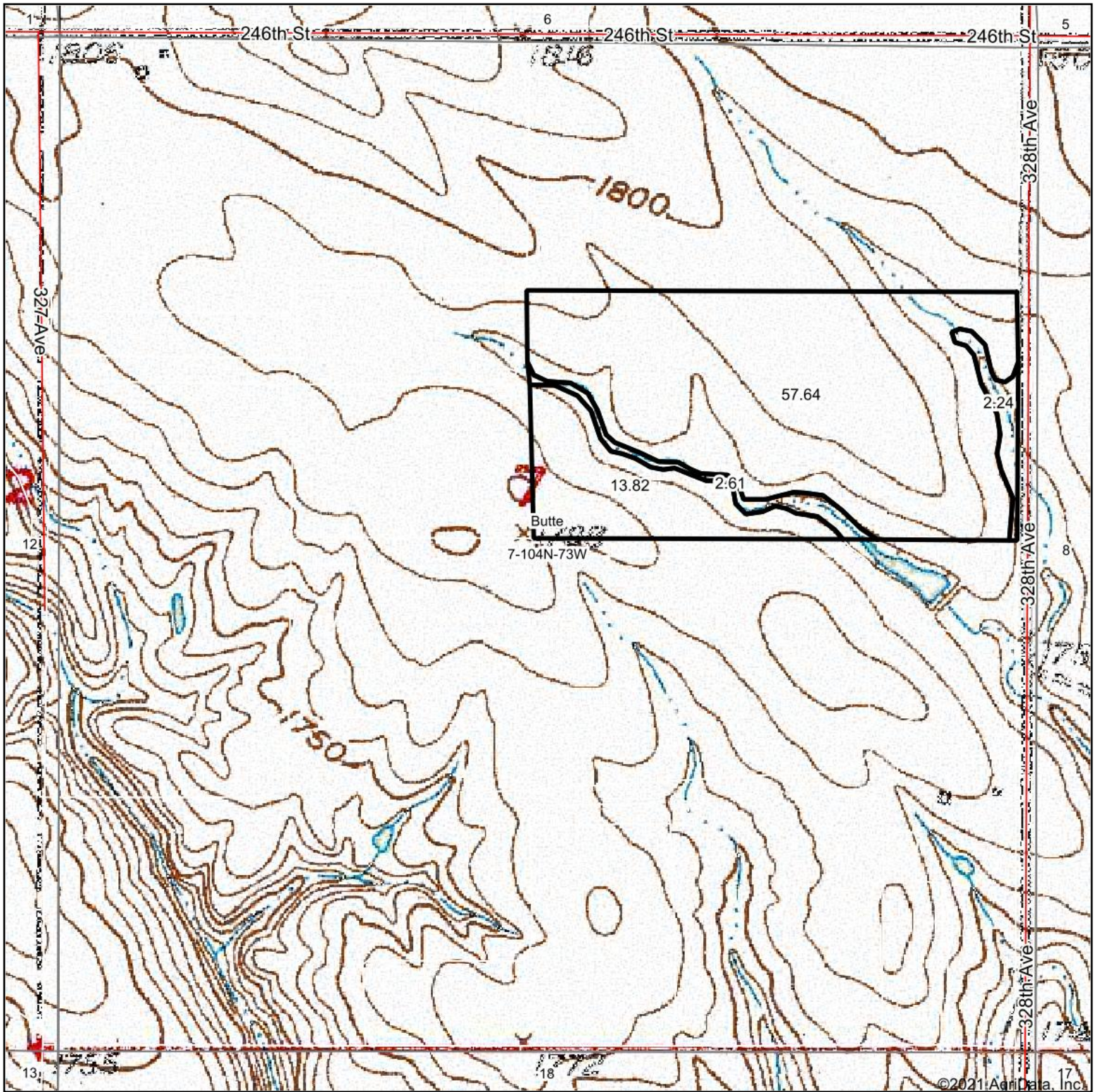


Area Symbol: SD085, Soil Area Version: 21

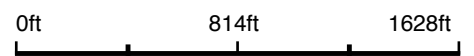
Code	Soil Description	Acres	Percent of field	PI Legend	Non-Irr Class *c	Irr Class *c	Productivity Index
MIB	Millboro silty clay loam, 3 to 6 percent slopes	74.81	98.0%		Ile	Ile	82
W	Water	1.50	2.0%		VIII		0
Weighted Average							80.4

*c: Using Capabilities Class Dominant Condition Aggregation Method
 Soils data provided by USDA and NRCS.

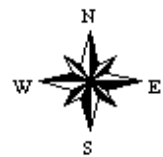
Topography Map



map center: 43° 49' 31.52, -99° 36' 50.26



7-104N-73W
Lyman County
South Dakota



6/8/2021

Maps Provided By:

CUSTOMIZED ONLINE MAPPING
© AgriData, Inc. 2021 www.AgriDataInc.com