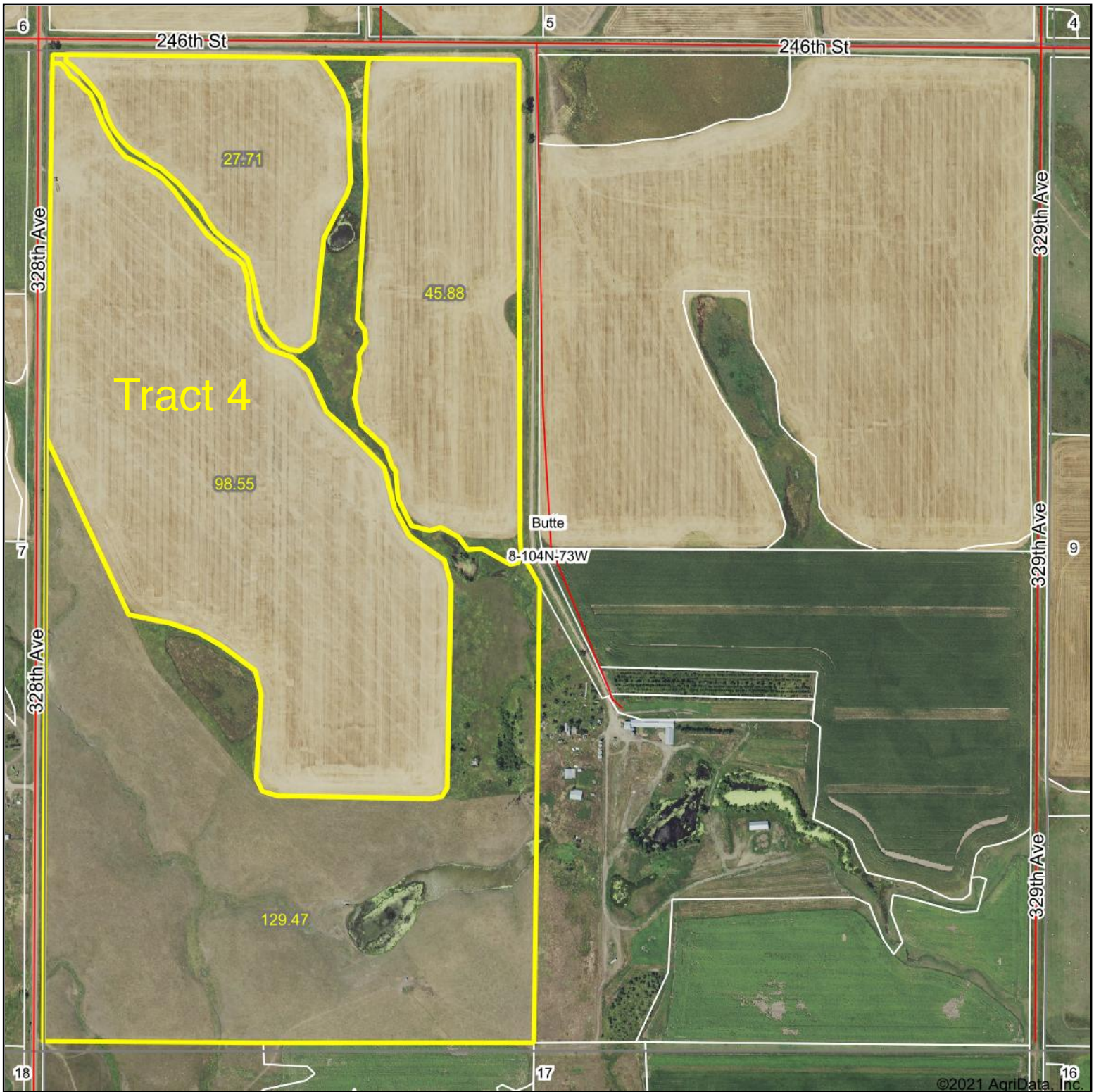
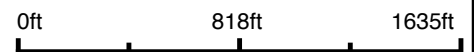


# Aerial Map



Map Center: 43° 49' 31.95, -99° 35' 39.23



**8-104N-73W**  
**Lyman County**  
**South Dakota**

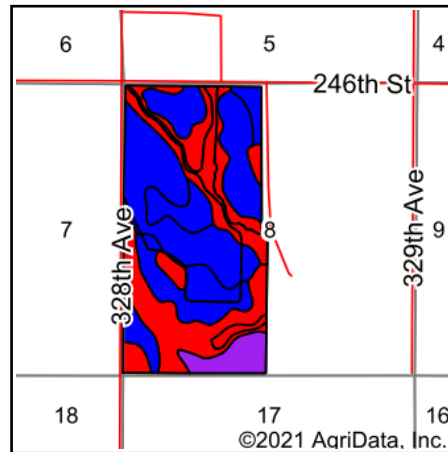
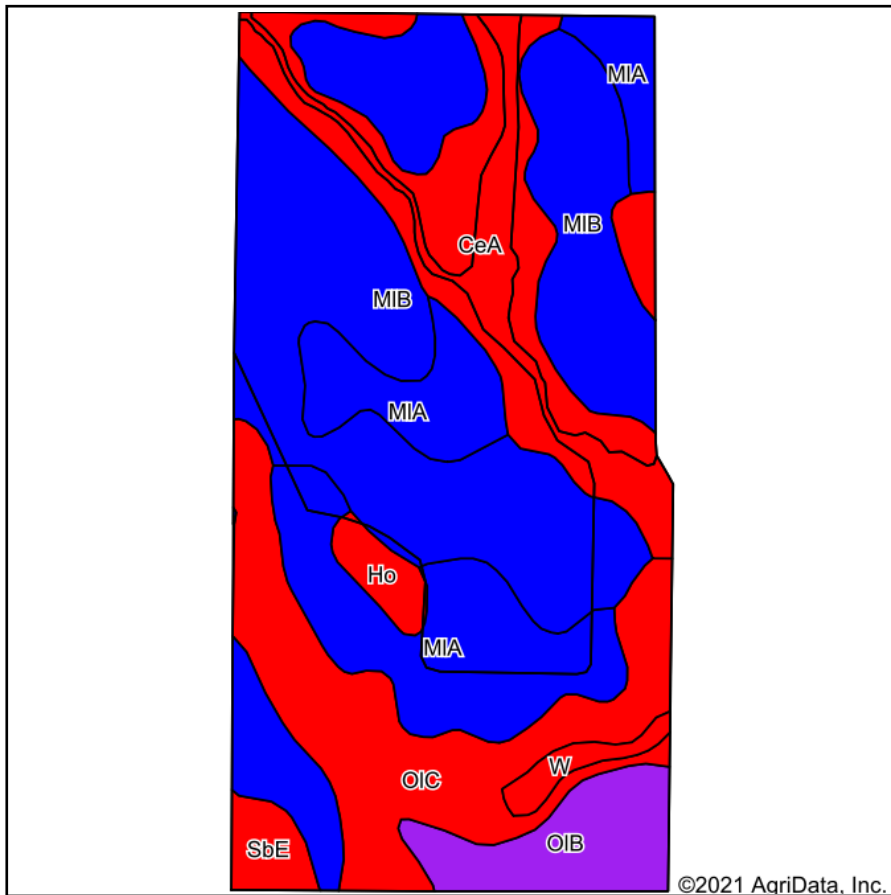


11/18/2021

Maps Provided By:  
 **surety**<sup>®</sup>  
CUSTOMIZED ONLINE MAPPING  
© AgriData, Inc. 2021 www.AgriDataInc.com

Field borders provided by Farm Service Agency as of 5/21/2008.

# Soils Map



State: **South Dakota**  
 County: **Lyman**  
 Location: **8-104N-73W**  
 Township: **Butte**  
 Acres: **301.61**  
 Date: **11/18/2021**



Soils data provided by USDA and NRCS.

Area Symbol: SD085, Soil Area Version: 22

Code	Soil Description	Acres	Percent of field	PI Legend	Non-Irr Class *c	Irr Class *c	Productivity Index	Corn Bu	Grain sorghum Bu	Oats Bu	Spring wheat Bu	Winter wheat Bu	*n NCCPI Soybeans
MIB	Millboro silty clay loam, 3 to 6 percent slopes	118.26	39.2%		Ile	Ile	82						33
MIA	Millboro silty clay loam, 0 to 3 percent slopes	54.18	18.0%		Ils	Ils	89						34
CeA	Carter silt loam, 0 to 3 percent slopes	50.88	16.9%		IVs	IVs	39						34
OIC	Opal clay, 6 to 9 percent slopes	47.49	15.7%		IVe	IVe	49						19
OIB	Opal clay, 3 to 6 percent slopes	17.17	5.7%		IIIe	IIIe	60						20
SbE	Sansarc-Opal clays, 9 to 25 percent slopes	5.26	1.7%		VIIe	VIIe	21						14
Ho	Hoven silt loam	4.79	1.6%		VIIs		15	3	4	4	2	2	7
W	Water	3.58	1.2%		VIII		0						
<b>Weighted Average</b>					<b>2.93</b>	<b>2.74</b>	<b>66.5</b>	<b>*-</b>	<b>0.1</b>	<b>0.1</b>	<b>*-</b>	<b>*-</b>	<b>*n 29.3</b>

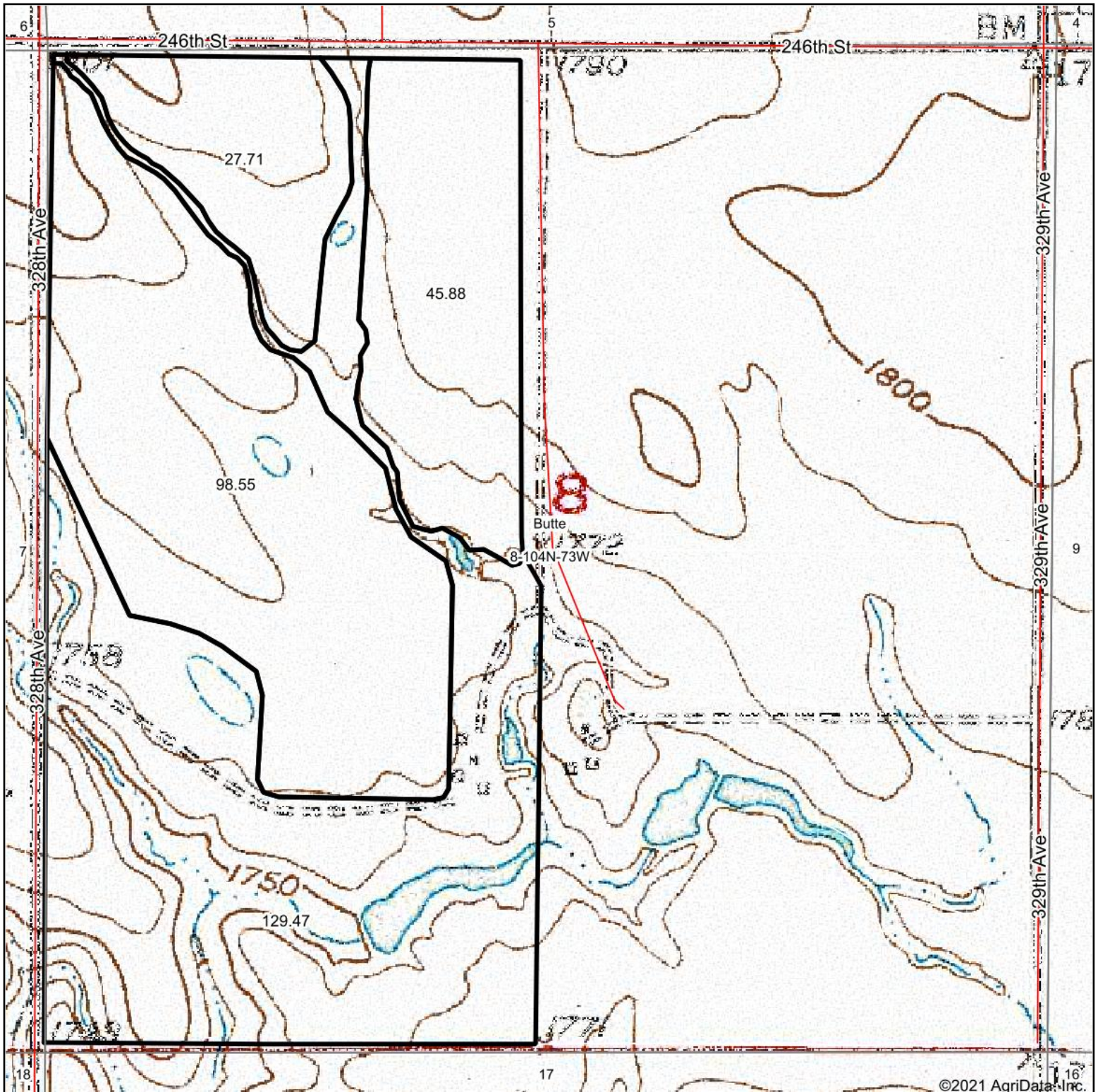
\*n: The aggregation method is "Weighted Average using all components"

\*c: Using Capabilities Class Dominant Condition Aggregation Method

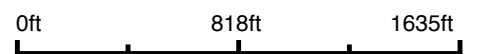
Soils data provided by USDA and NRCS.



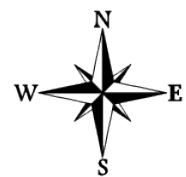
# Topography Map



map center: 43° 49' 31.95, -99° 35' 39.23



**8-104N-73W**  
**Lyman County**  
**South Dakota**



11/18/2021

Maps Provided By:



© AgriData, Inc. 2021 www.AgriDataInc.com