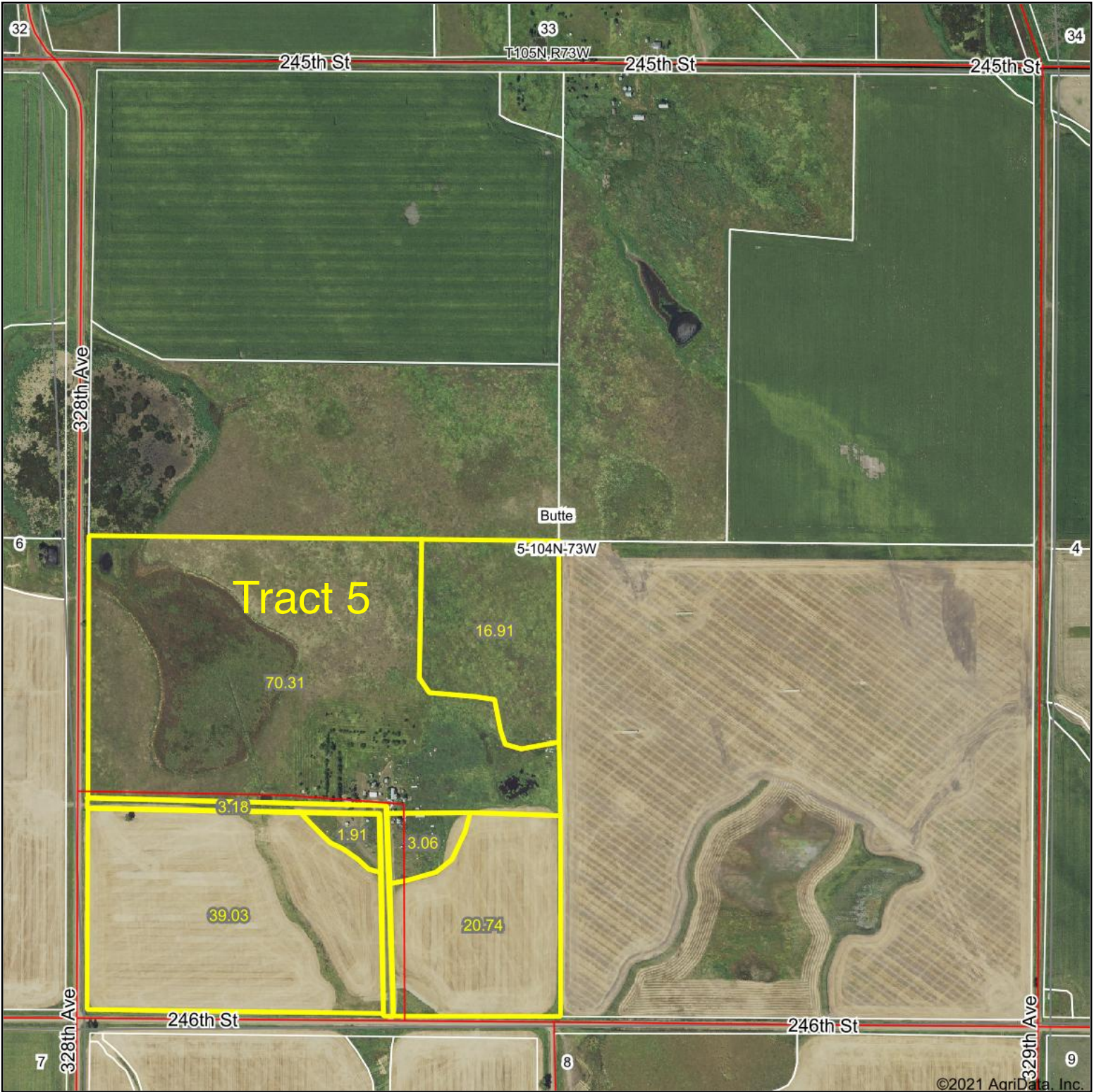
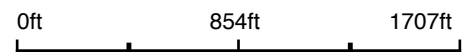


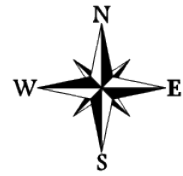
Aerial Map



Map Center: 43° 50' 23.95, -99° 35' 41.08



5-104N-73W
Lyman County
South Dakota



8/14/2021

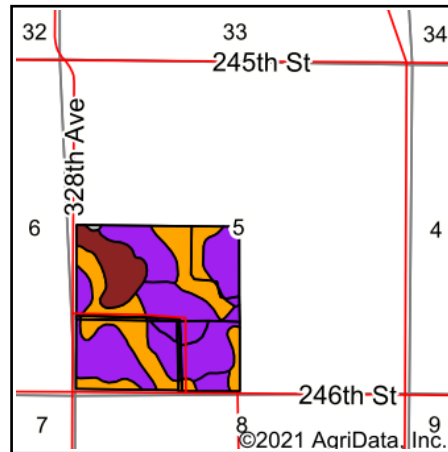
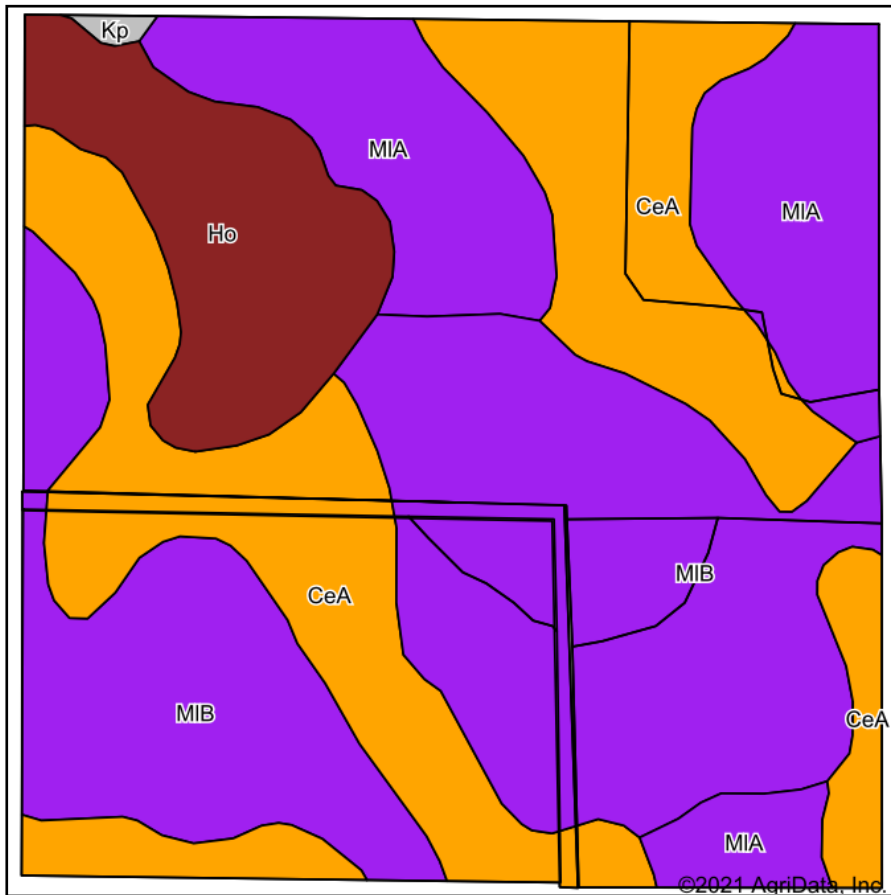
Maps Provided By:



© AgriData, Inc. 2021 www.AgriDataInc.com

Field borders provided by Farm Service Agency as of 5/21/2008.

Soils Map



State: **South Dakota**
 County: **Lyman**
 Location: **5-104N-73W**
 Township: **Butte**
 Acres: **155.14**
 Date: **8/14/2021**






Maps Provided By:

 CUSTOMIZED ONLINE MAPPING
 © AgriData, Inc. 2021 www.AgriDataInc.com



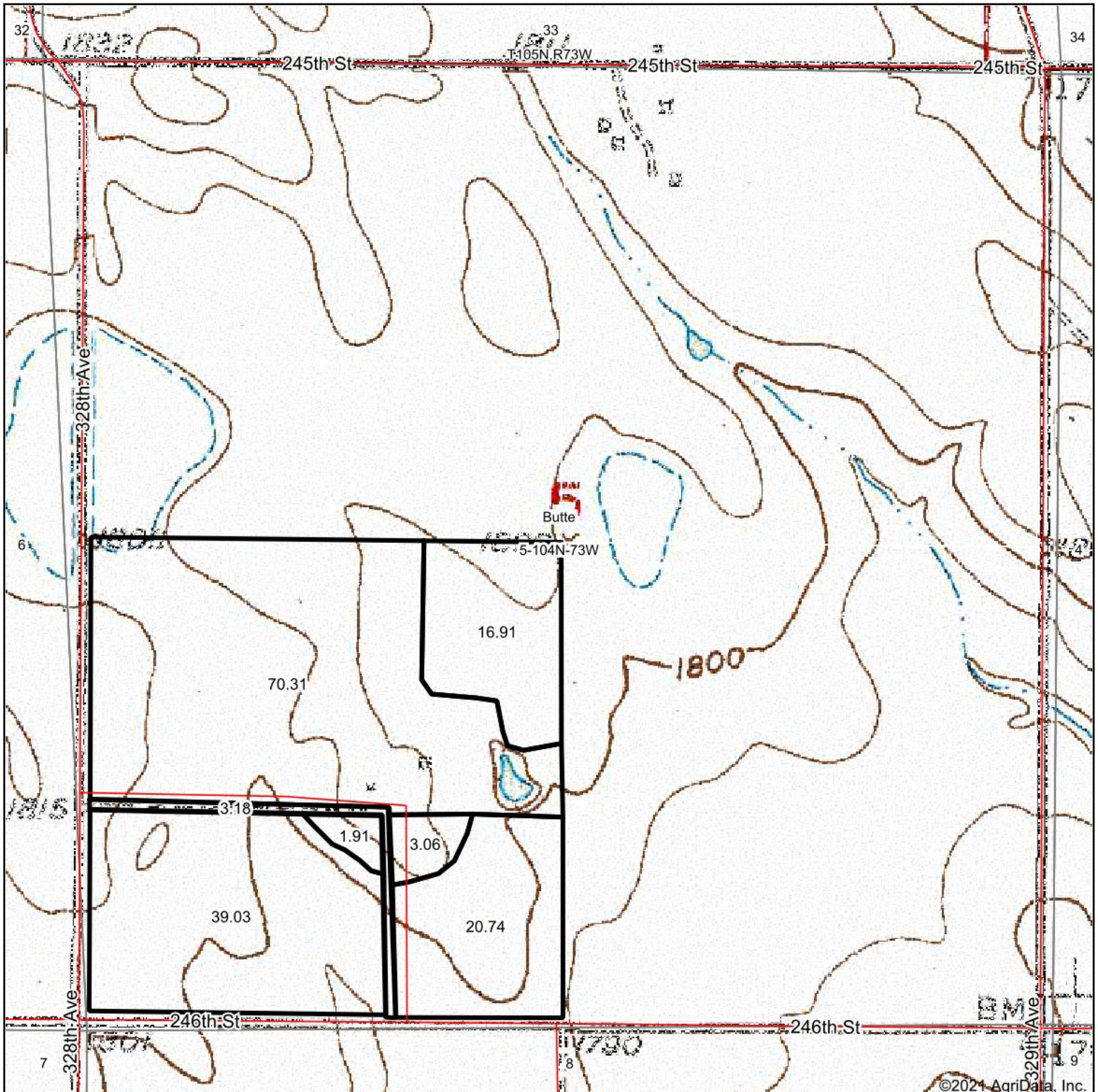
Soils data provided by USDA and NRCS.

Area Symbol: SD085, Soil Area Version: 21

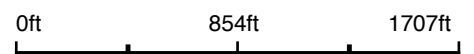
Code	Soil Description	Acres	Percent of field	PI Legend	Non-Irr Class *c	Irr Class *c	Productivity Index
MIB	Millboro silty clay loam, 3 to 6 percent slopes	61.28	39.5%		Ile	Ile	82
CeA	Carter silt loam, 0 to 3 percent slopes	48.17	31.0%		IVs	IVs	39
MIA	Millboro silty clay loam, 0 to 3 percent slopes	28.64	18.5%		IIs	IIs	89
Ho	Hoven silt loam	16.67	10.7%		VIIs		15
Kp	Kolls silty clay, ponded	0.38	0.2%		VIIIw		10
Weighted Average							62.6

*c: Using Capabilities Class Dominant Condition Aggregation Method
 Soils data provided by USDA and NRCS.

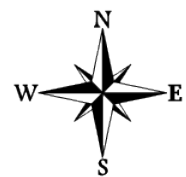
Topography Map



map center: 43° 50' 23.95, -99° 35' 41.08



5-104N-73W
Lyman County
South Dakota



8/14/2021

Maps Provided By:



© AgriData, Inc. 2021 www.AgriDataInc.com