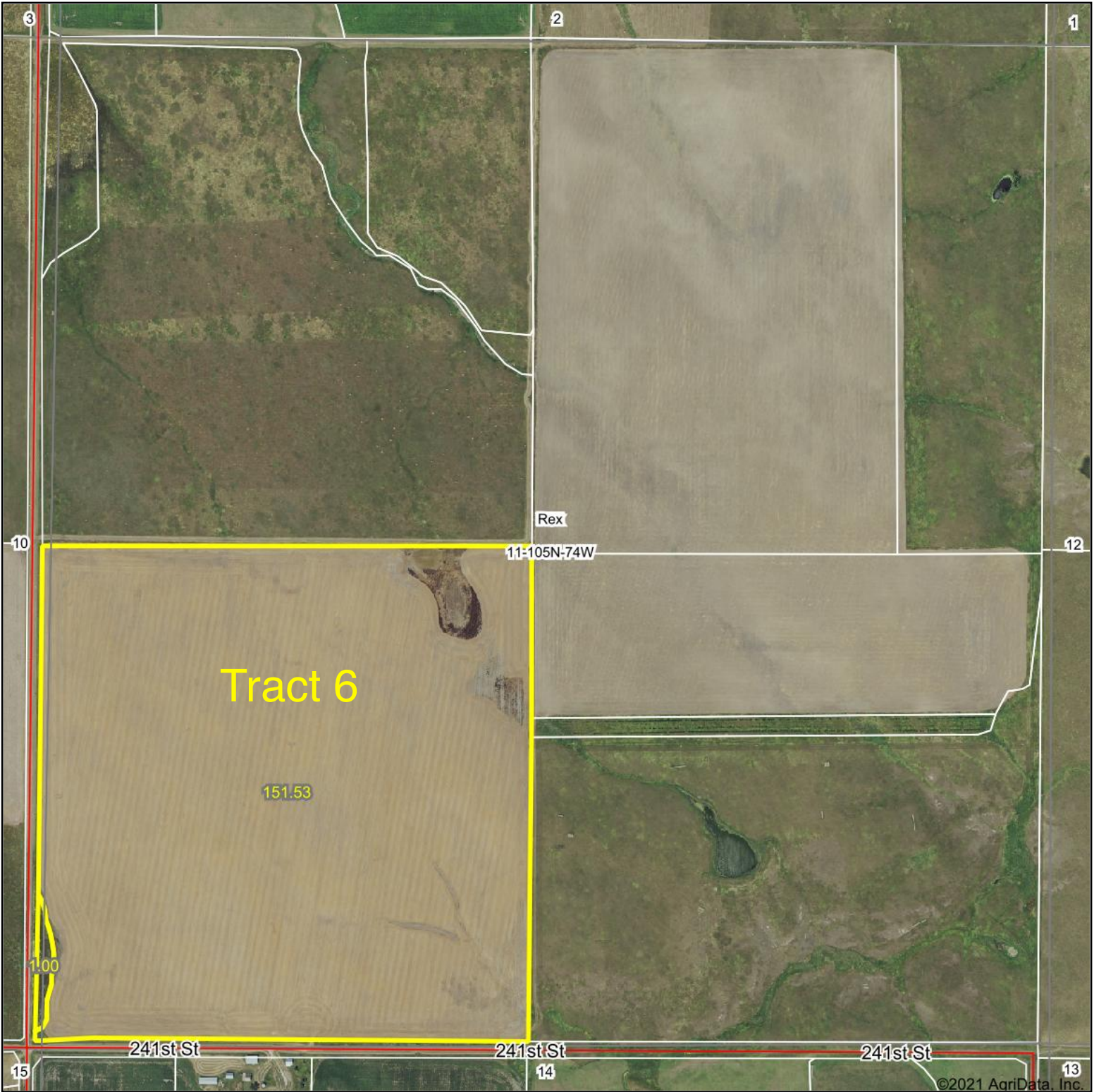
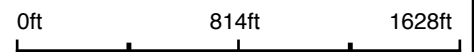


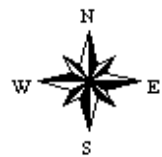
Aerial Map



Map Center: 43° 54' 45.02, -99° 40' 31.57



11-105N-74W
Lyman County
South Dakota

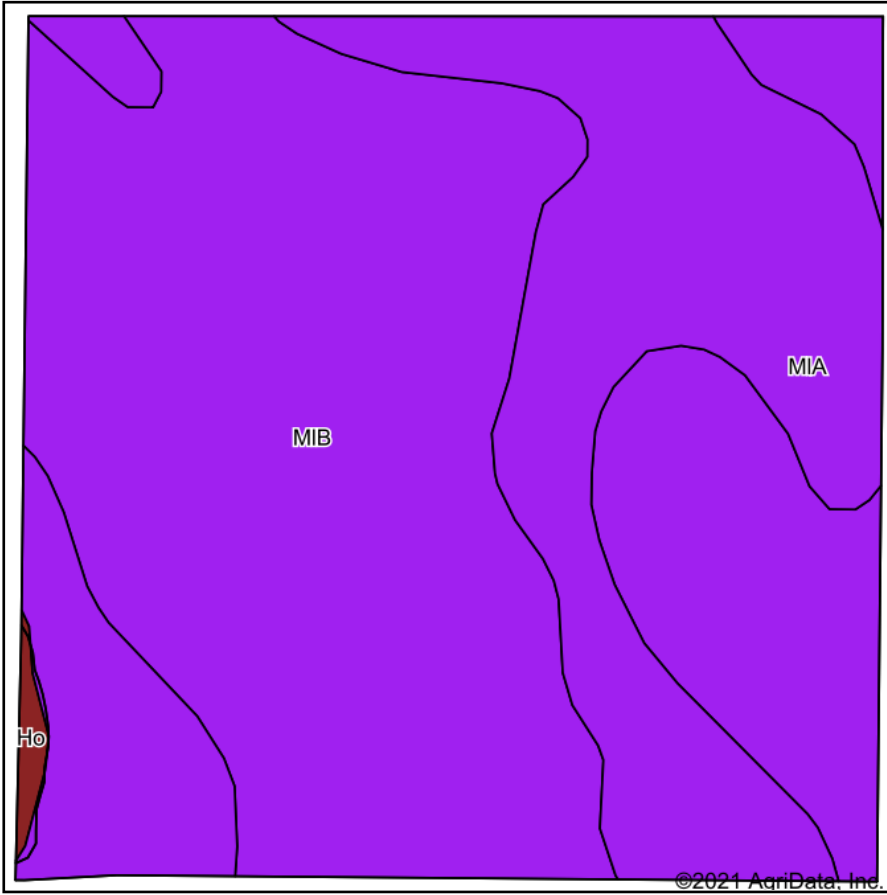


6/8/2021

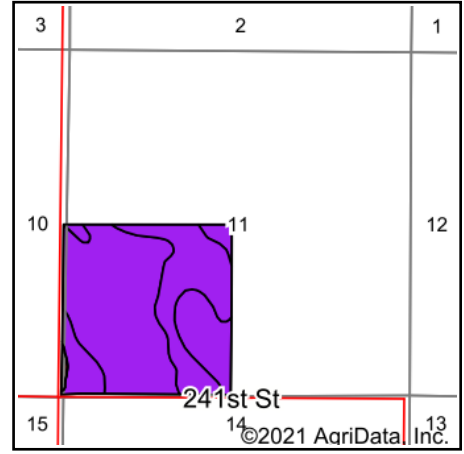
Maps Provided By:
 **surety**[®]
CUSTOMIZED ONLINE MAPPING
© AgriData, Inc. 2021 www.AgriDataInc.com

Field borders provided by Farm Service Agency as of 5/21/2008.

Soils Map



Soils data provided by USDA and NRCS.



State: **South Dakota**
 County: **Lyman**
 Location: **11-105N-74W**
 Township: **Rex**
 Acres: **152.53**
 Date: **6/8/2021**

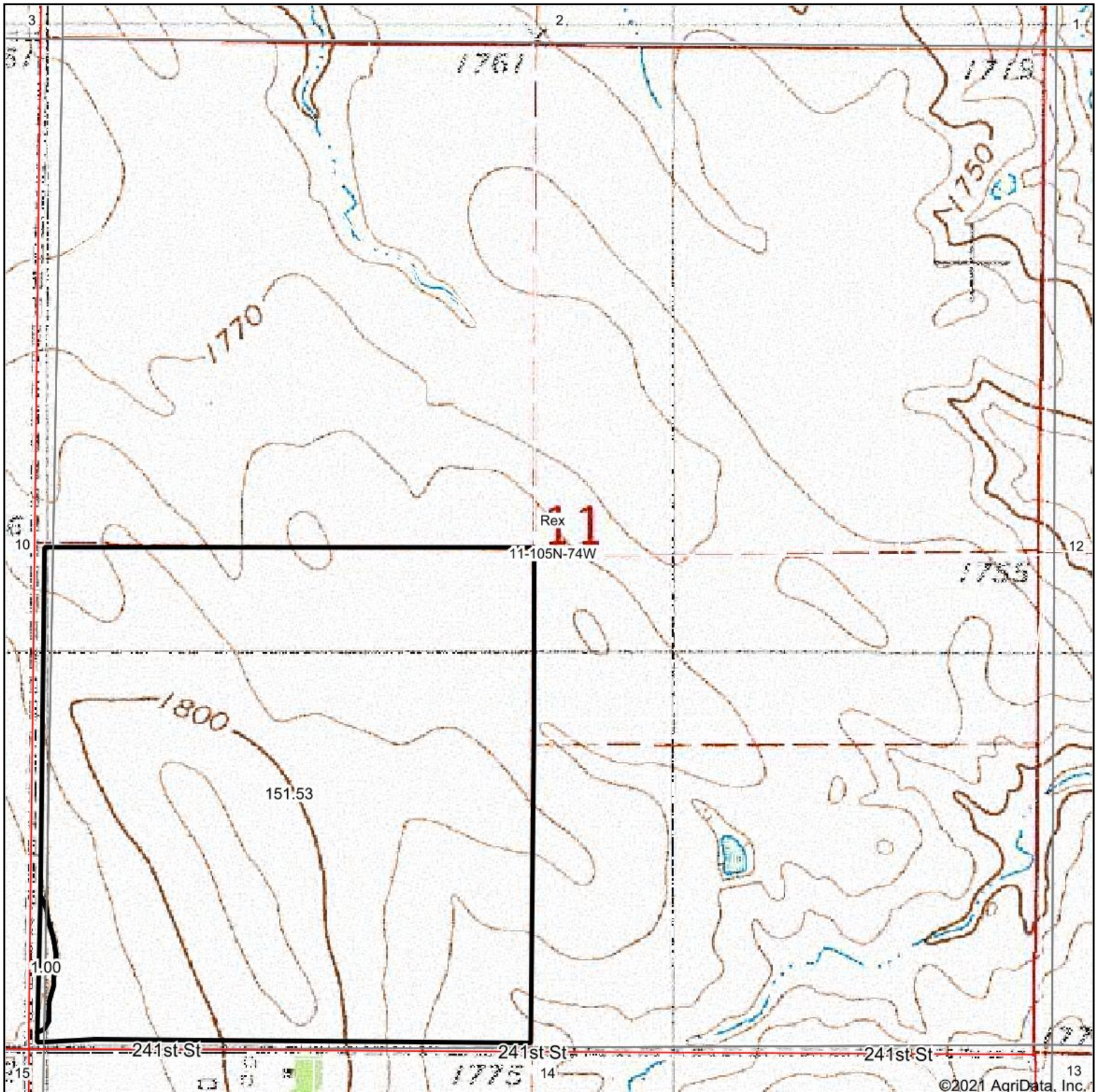


Area Symbol: SD085, Soil Area Version: 21

Code	Soil Description	Acres	Percent of field	PI Legend	Non-Irr Class *c	Irr Class *c	Productivity Index
MIB	Millboro silty clay loam, 3 to 6 percent slopes	100.65	66.0%		Ile	Ile	82
MIA	Millboro silty clay loam, 0 to 3 percent slopes	51.00	33.4%		IIs	IIs	89
Ho	Hoven silt loam	0.88	0.6%		VIs		15
Weighted Average							84

*c: Using Capabilities Class Dominant Condition Aggregation Method
 Soils data provided by USDA and NRCS.

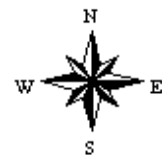
Topography Map



map center: 43° 54' 45.02, -99° 40' 31.57

0ft 814ft 1628ft

11-105N-74W
Lyman County
South Dakota



6/8/2021

Maps Provided By:
 **surety**[®]
CUSTOMIZED ONLINE MAPPING
© AgriData, Inc. 2021 www.AgriDataInc.com

Field borders provided by Farm Service Agency as of 5/21/2008.