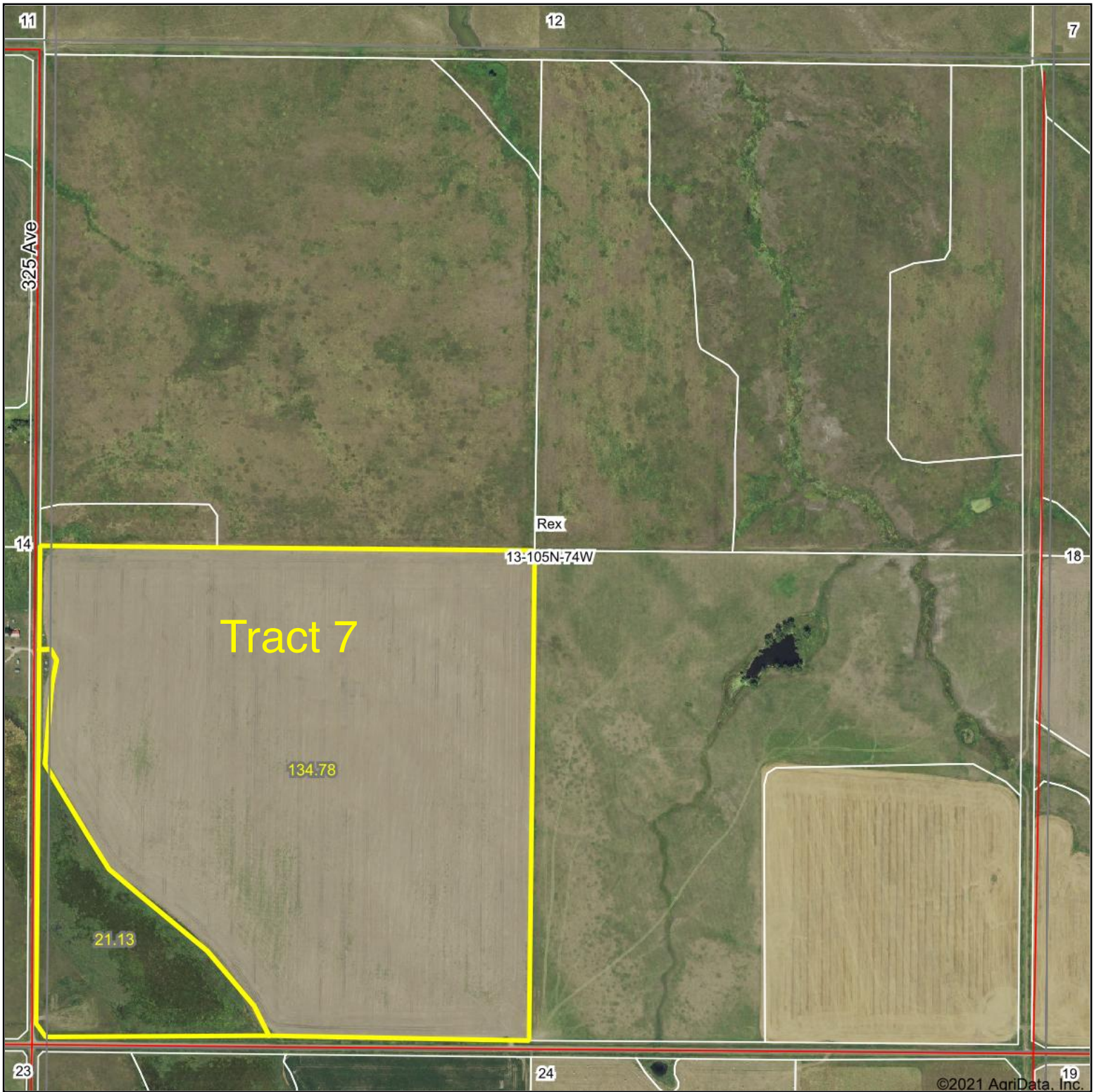
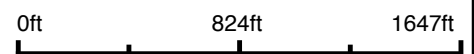


Aerial Map



Map Center: 43° 53' 53.17, -99° 39' 19.42



13-105N-74W
Lyman County
South Dakota



11/18/2021

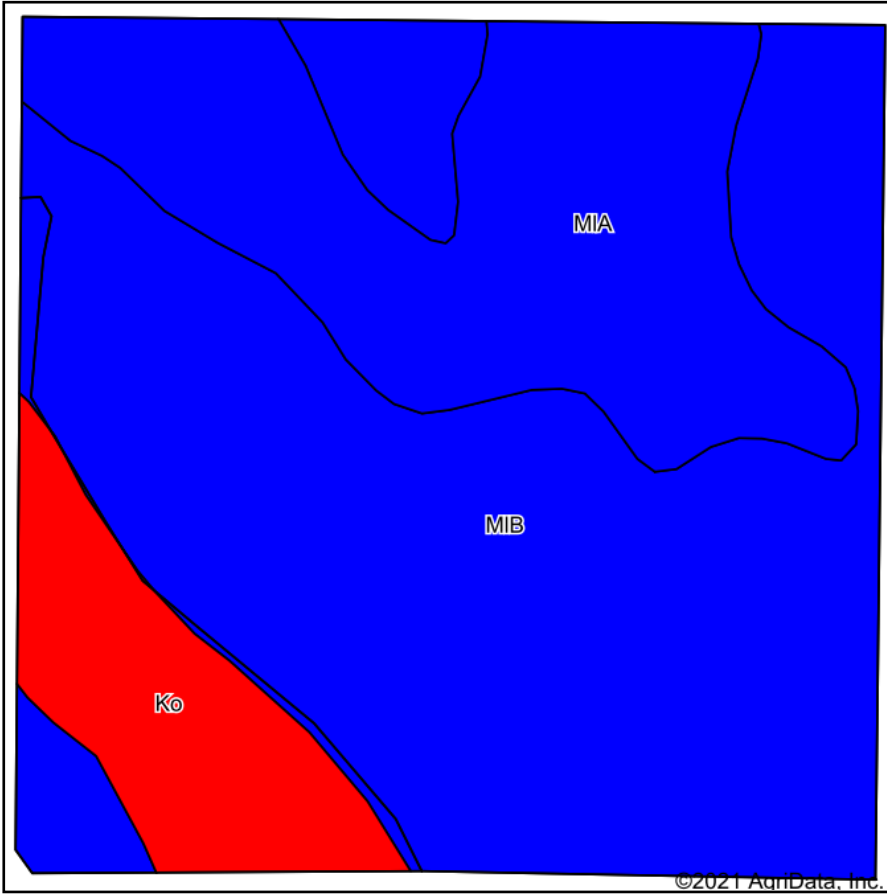
Maps Provided By:



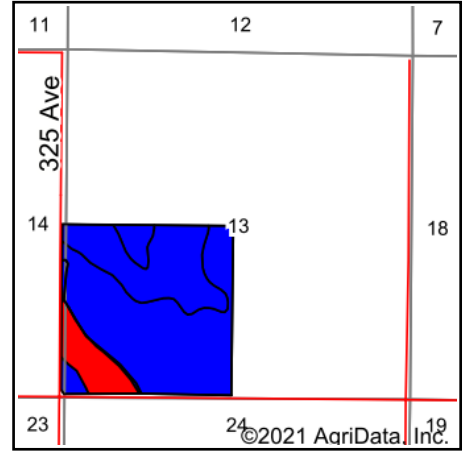
© AgriData, Inc. 2021 www.AgriDataInc.com

Field borders provided by Farm Service Agency as of 5/21/2008.

Soils Map



Soils data provided by USDA and NRCS.






State: **South Dakota**
 County: **Lyman**
 Location: **13-105N-74W**
 Township: **Rex**
 Acres: **155.91**
 Date: **11/18/2021**

Maps Provided By:

 CUSTOMIZED ONLINE MAPPING
 © AgriData, Inc. 2021 www.AgriDataInc.com



Area Symbol: SD085, Soil Area Version: 22

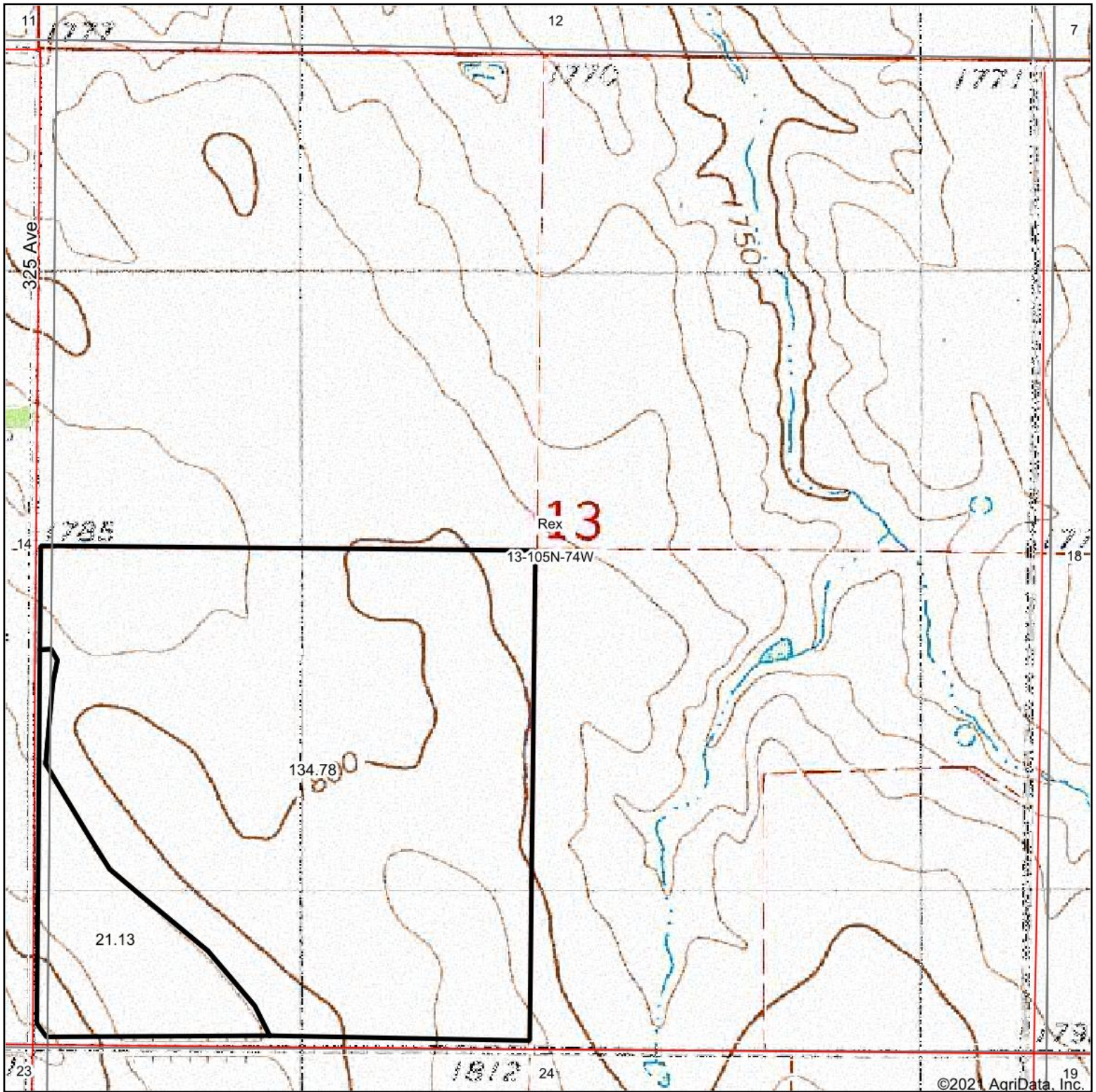
Code	Soil Description	Acres	Percent of field	PI Legend	Non-Irr Class *c	Irr Class *c	Productivity Index	*n NCCPI Soybeans
MIB	Millboro silty clay loam, 3 to 6 percent slopes	95.93	61.5%		Ile	Ile	82	33
MIA	Millboro silty clay loam, 0 to 3 percent slopes	43.72	28.0%		Ils	Ils	89	34
Ko	Kolls silty clay	16.26	10.4%		Vw	Vw	30	5
Weighted Average					2.31	2.31	78.5	*n 30.4

*n: The aggregation method is "Weighted Average using all components"

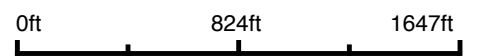
*c: Using Capabilities Class Dominant Condition Aggregation Method

Soils data provided by USDA and NRCS.

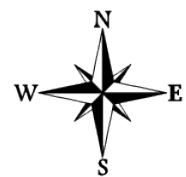
Topography Map



map center: 43° 53' 53.17, -99° 39' 19.42



13-105N-74W
Lyman County
South Dakota



11/18/2021

Maps Provided By:



© AgriData, Inc. 2021 www.AgriDataInc.com