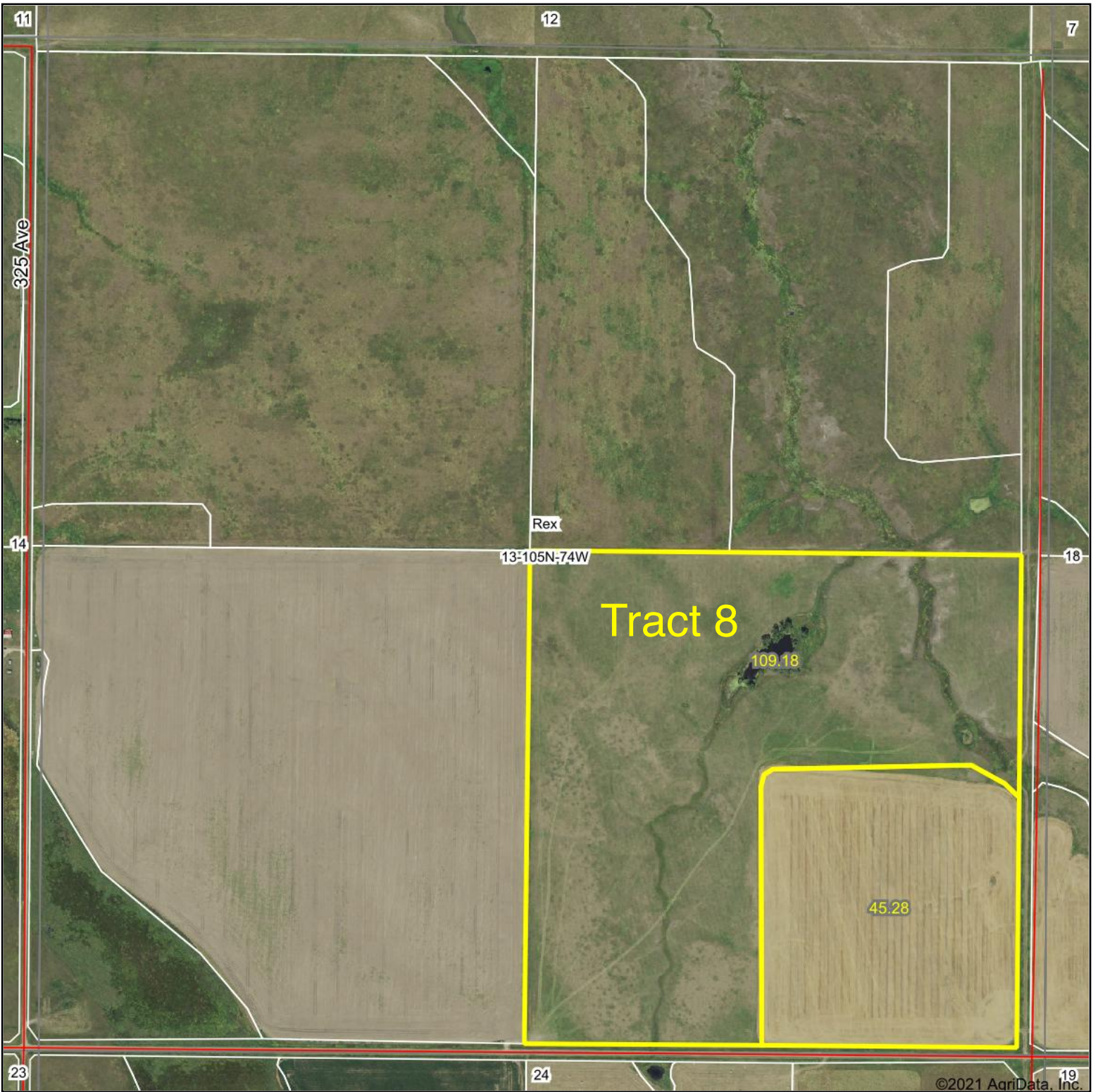
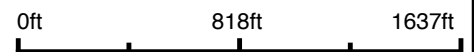


# Aerial Map



©2021 AgriData, Inc.

Map Center: 43° 53' 53.17, -99° 39' 19.18



**13-105N-74W**  
**Lyman County**  
**South Dakota**



11/18/2021

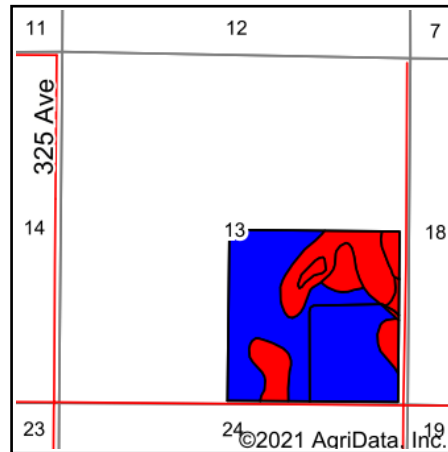
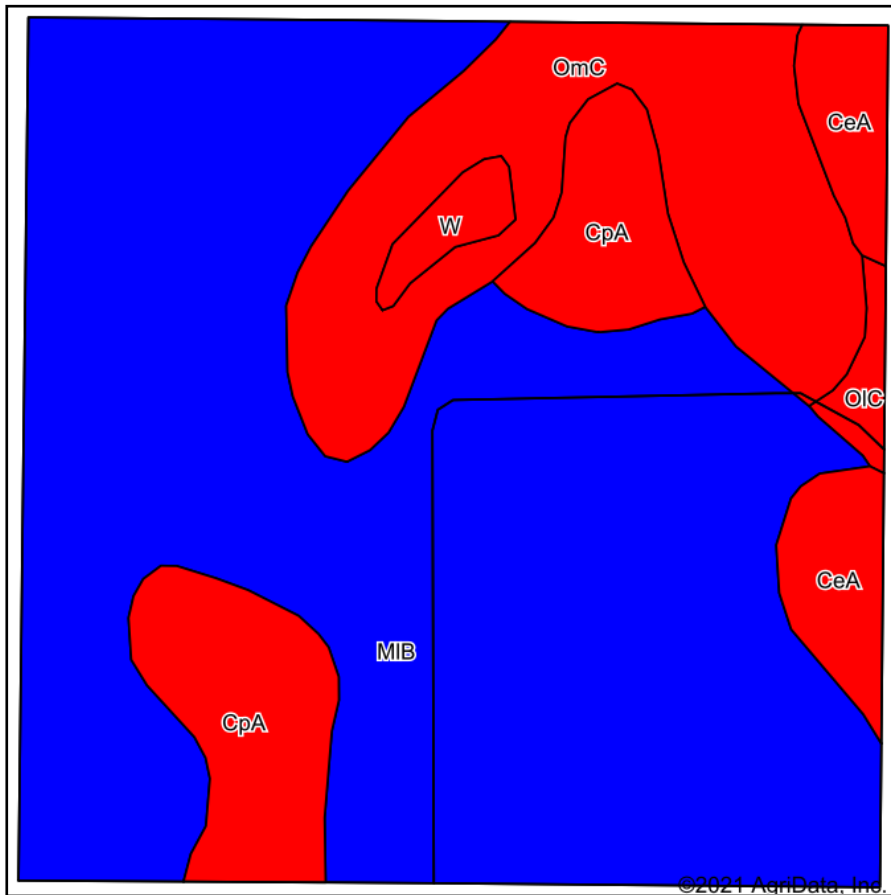
Maps Provided By:



© AgriData, Inc. 2021 www.AgriDataInc.com

Field borders provided by Farm Service Agency as of 5/21/2008.

# Soils Map



State: **South Dakota**  
 County: **Lyman**  
 Location: **13-105N-74W**  
 Township: **Rex**  
 Acres: **154.46**  
 Date: **11/18/2021**

Maps Provided By:  
  
 CUSTOMIZED ONLINE MAPPING  
 © AgriData, Inc. 2021 www.AgriDataInc.com



Soils data provided by USDA and NRCS.

Area Symbol: SD085, Soil Area Version: 22

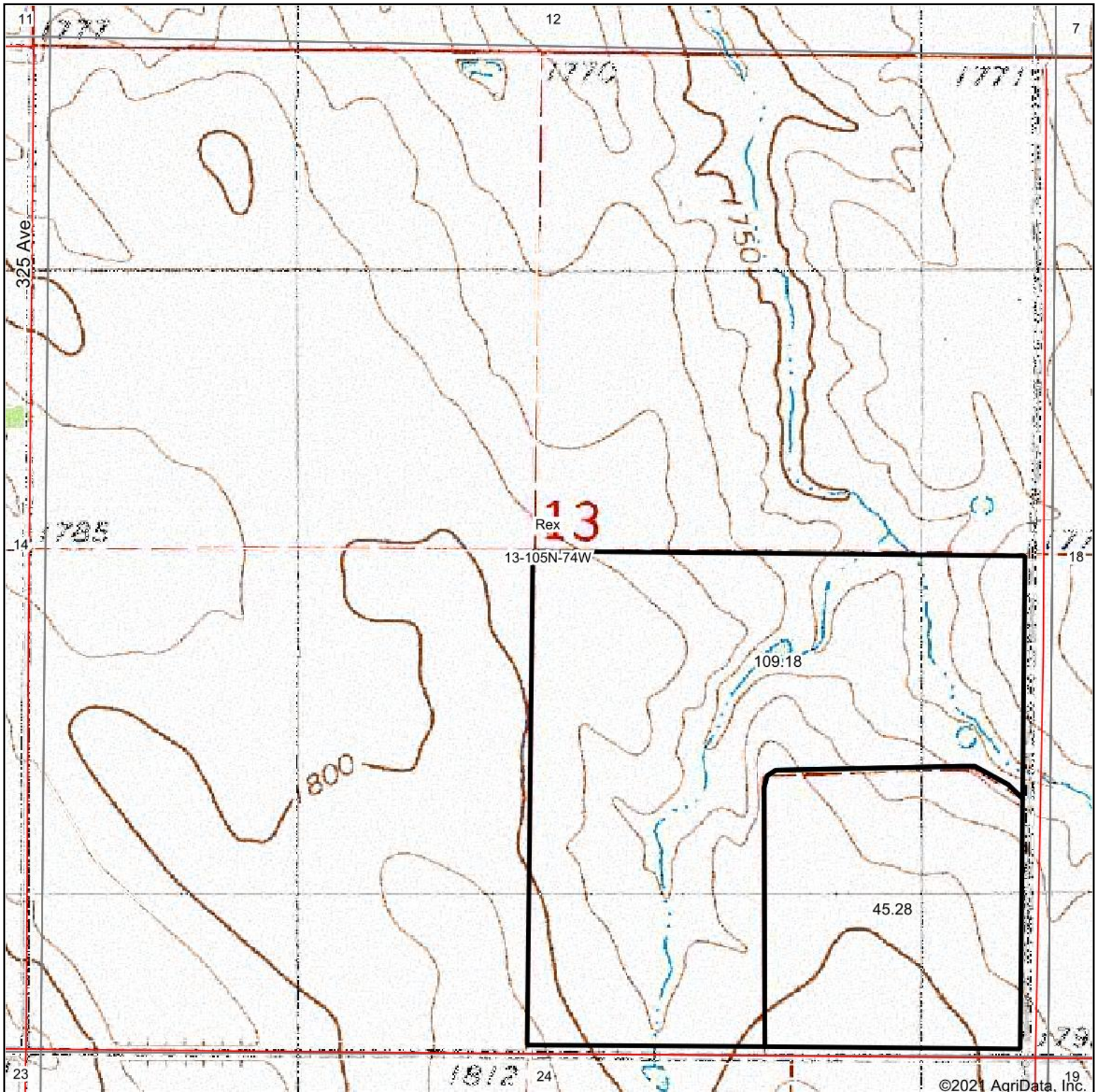
Code	Soil Description	Acres	Percent of field	PI Legend	Non-Irr Class *c	Irr Class *c	Productivity Index	Alfalfa hay Tons	Corn Bu	Grain sorghum Bu	Oats Bu	Spring wheat Bu	Tall wheatgrass AUM	Winter wheat Bu	*n NCCPI Soybeans
MIB	Millboro silty clay loam, 3 to 6 percent slopes	103.51	67.0%		Ile	Ile	82								33
OmC	Opal-Chantier clays, 2 to 9 percent slope	24.61	15.9%		IVe		29	1.3	21	24	33	17	2.2	26	16
CpA	Capa silt loam, 0 to 6 percent slopes	15.44	10.0%		VIIs	VIIs	11								14
CeA	Carter silt loam, 0 to 3 percent slopes	7.61	4.9%		IVs	IVs	39								34
W	Water	1.81	1.2%		VIII		0								
OIC	Opal clay, 6 to 9 percent slopes	1.48	1.0%		IVe	IVe	49								19
<b>Weighted Average</b>					<b>2.91</b>	<b>2.18</b>	<b>63.1</b>	<b>0.2</b>	<b>3.3</b>	<b>3.8</b>	<b>5.3</b>	<b>2.7</b>	<b>0.4</b>	<b>4.1</b>	<b>*n 27.9</b>

\*n: The aggregation method is "Weighted Average using all components"

\*c: Using Capabilities Class Dominant Condition Aggregation Method

Soils data provided by USDA and NRCS.

# Topography Map



map center: 43° 53' 53.17, -99° 39' 19.18

0ft 818ft 1637ft

**13-105N-74W**  
**Lyman County**  
**South Dakota**



11/18/2021

Maps Provided By:  
**surety**  
CUSTOMIZED ONLINE MAPPING  
© AgriData, Inc. 2021 www.AgriDataInc.com

Field borders provided by Farm Service Agency as of 5/21/2008.