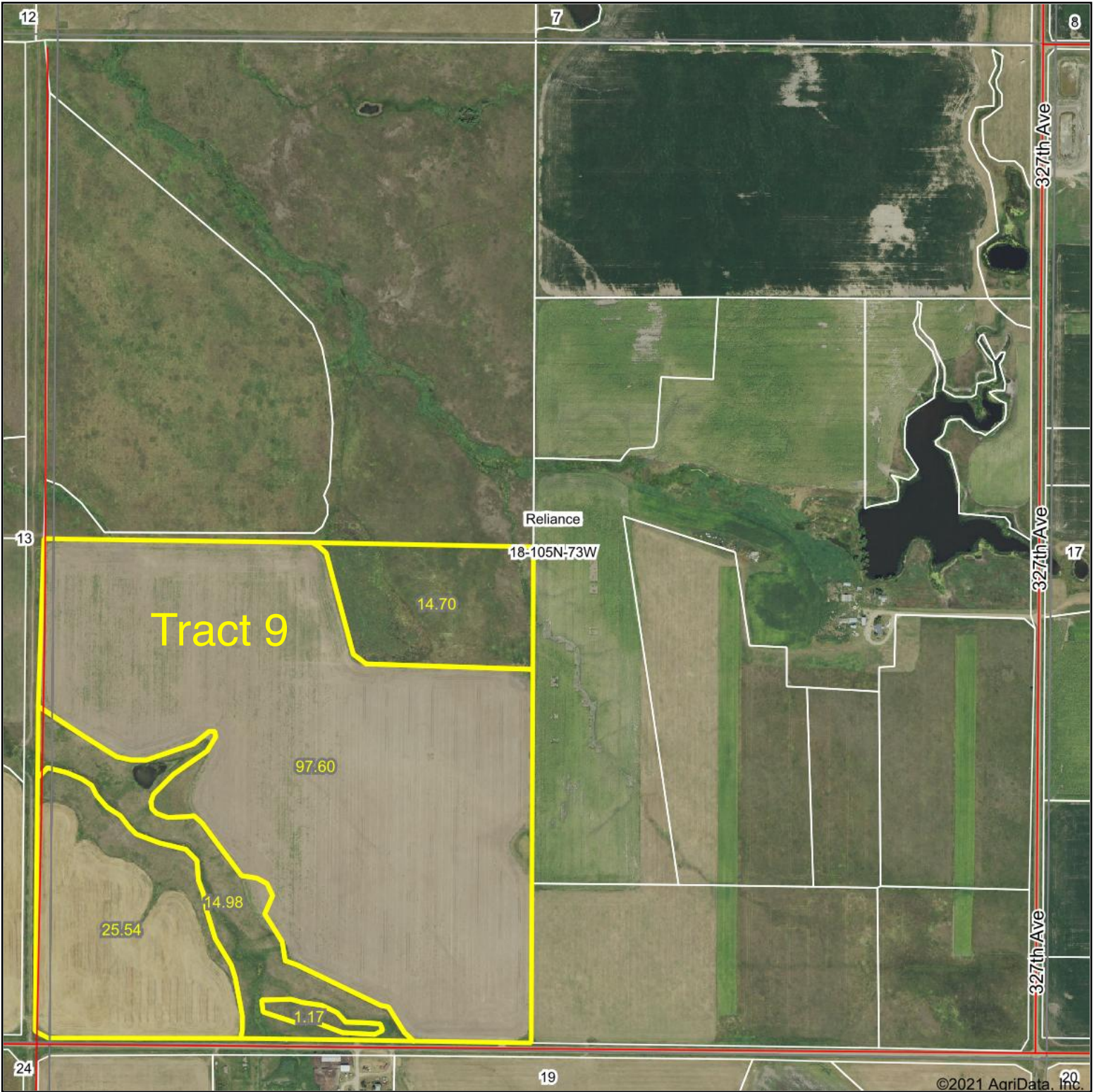
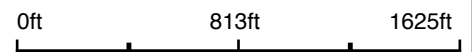


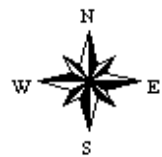
Aerial Map



Map Center: 43° 53' 52.74, -99° 38' 7.8



18-105N-73W
Lyman County
South Dakota

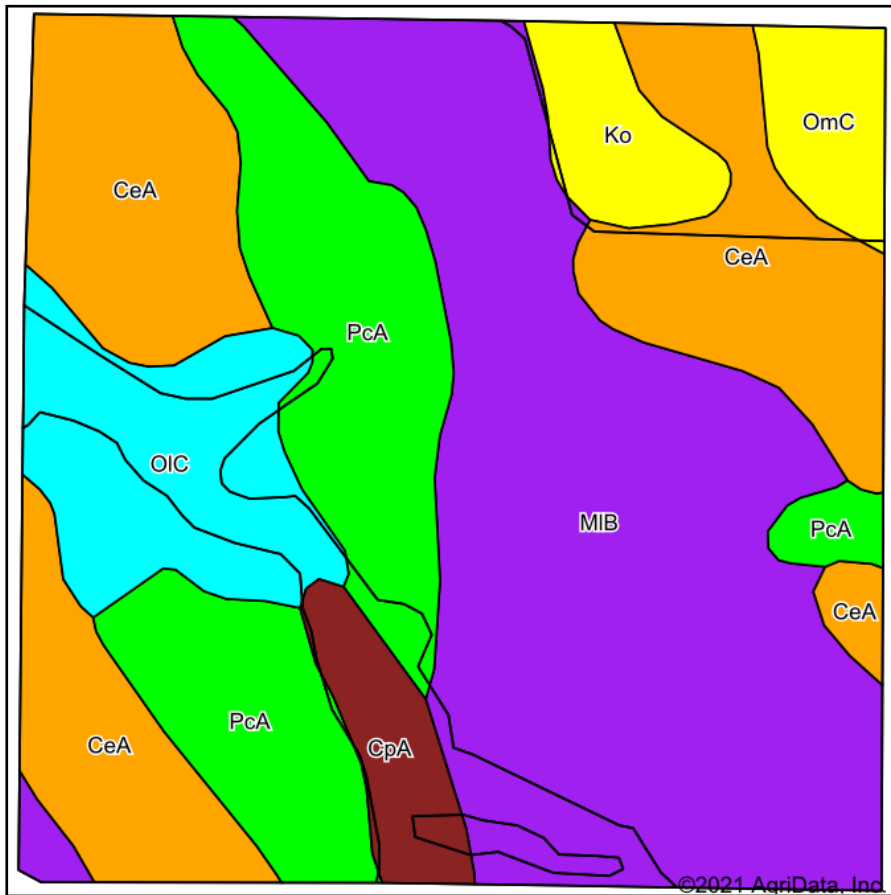


6/8/2021

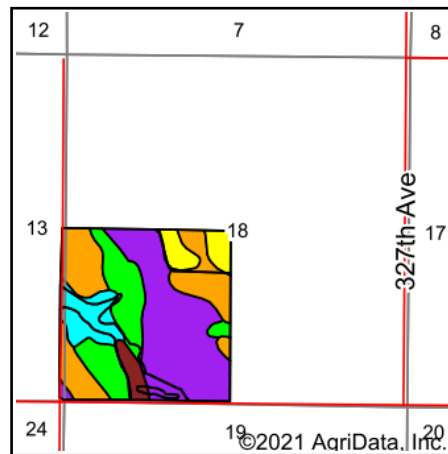
Maps Provided By:
**surety**[®]
CUSTOMIZED ONLINE MAPPING
© AgriData, Inc. 2021 www.AgriDataInc.com

Field borders provided by Farm Service Agency as of 5/21/2008.

Soils Map



Soils data provided by USDA and NRCS.



State: **South Dakota**
 County: **Lyman**
 Location: **18-105N-73W**
 Township: **Reliance**
 Acres: **153.99**
 Date: **6/8/2021**

Maps Provided By:

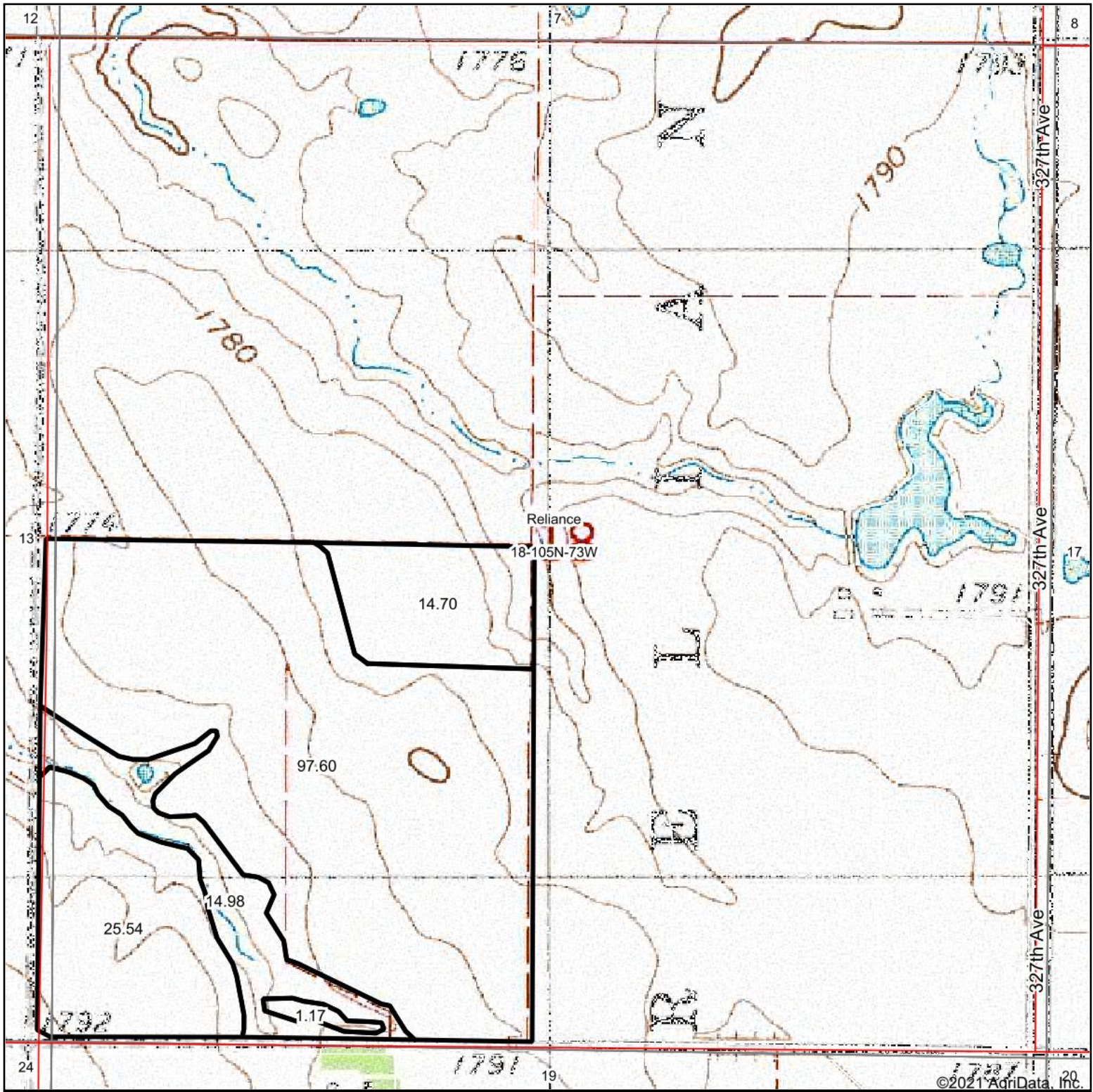


Area Symbol: SD085, Soil Area Version: 21

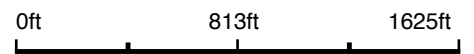
Code	Soil Description	Acres	Percent of field	PI Legend	Non-Irr Class *c	Irr Class *c	Productivity Index
MIB	Millboro silty clay loam, 3 to 6 percent slopes	57.74	37.5%		Ile	Ile	82
CeA	Carter silt loam, 0 to 3 percent slopes	37.71	24.5%		IVs	IVs	39
PcA	Promise-Capa complex, 0 to 3 percent slopes	28.85	18.7%		IIIe	IIIe	53
OIC	Opal clay, 6 to 9 percent slopes	14.50	9.4%		IVe	IVe	49
Ko	Kolls silty clay	5.25	3.4%		Vw	Vw	30
CpA	Capa silt loam, 0 to 6 percent slopes	5.18	3.4%		VIIs	VIIs	11
OmC	Opal-Chantier clays, 2 to 9 percent slope	4.76	3.1%		IVe		29
Weighted Average							57.1

*c: Using Capabilities Class Dominant Condition Aggregation Method
 Soils data provided by USDA and NRCS.

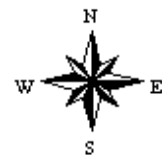
Topography Map



map center: 43° 53' 52.74, -99° 38' 7.8



18-105N-73W
Lyman County
South Dakota



6/8/2021

Maps Provided By:

CUSTOMIZED ONLINE MAPPING
© AgriData, Inc. 2021 www.AgriDataInc.com