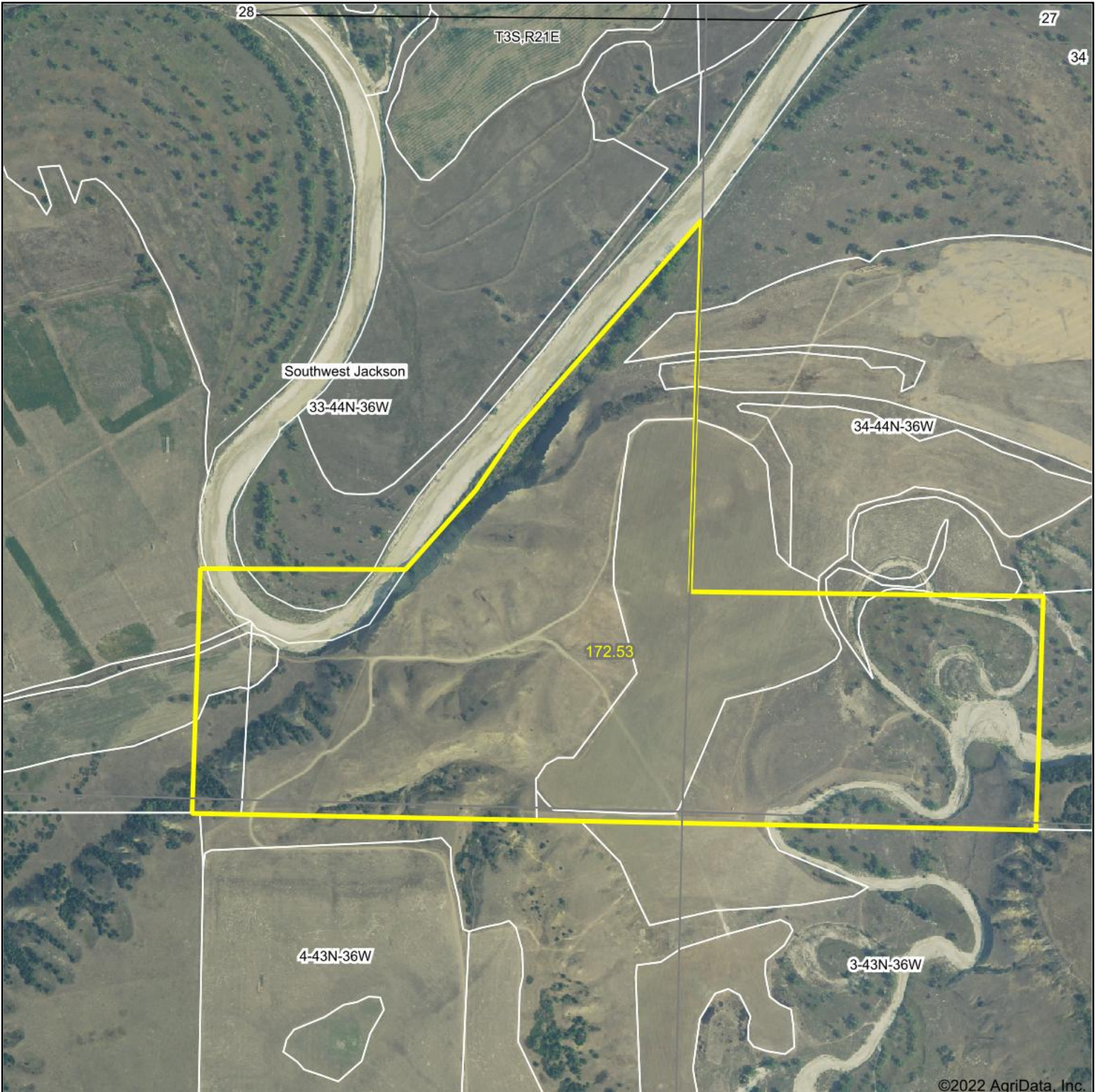
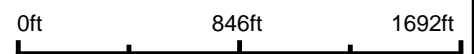


# Aerial Map



Map Center: 43° 44' 27.95, -101° 36' 17.17



**33-44N-36W**  
**Jackson County**  
**South Dakota**



9/1/2022

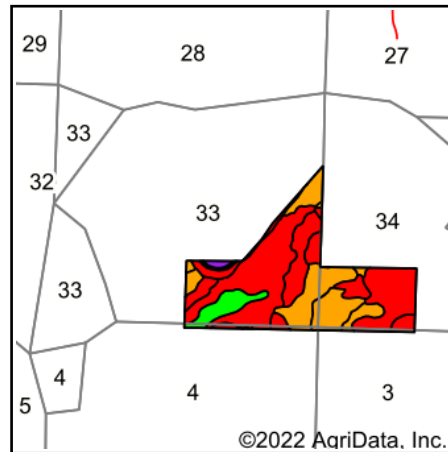
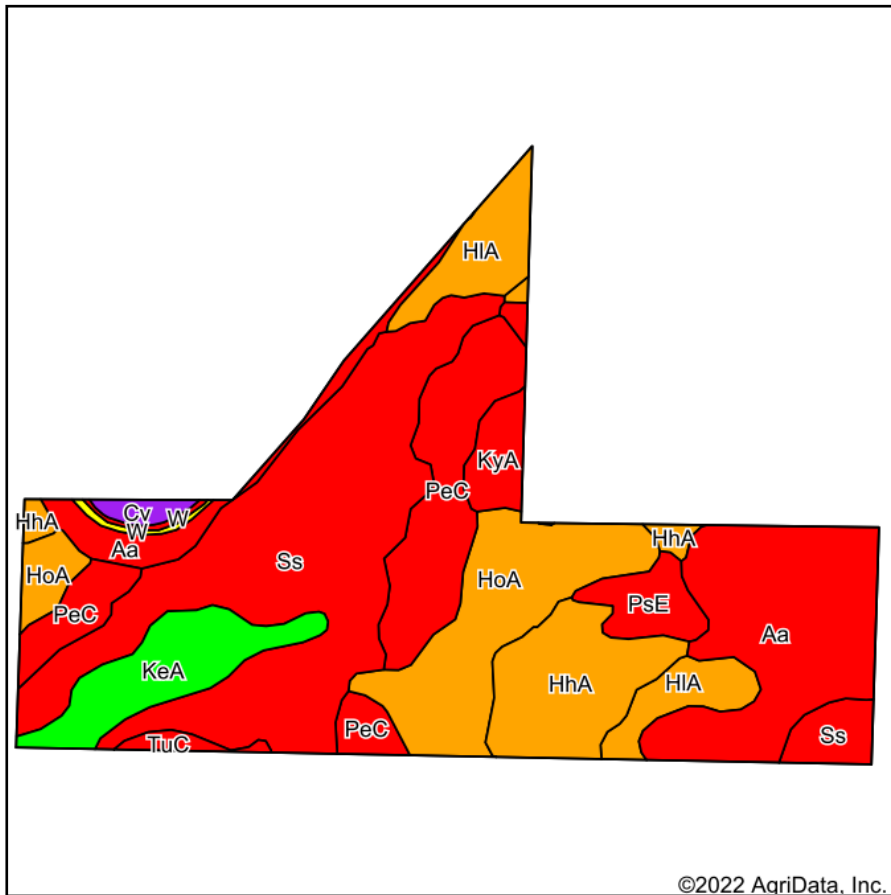
Maps Provided By:



© AgriData, Inc. 2021 www.AgriDataInc.com

Field borders provided by Farm Service Agency as of 5/21/2008.

# Soils Map



State: **South Dakota**  
 County: **Jackson**  
 Location: **33-44N-36W**  
 Township: **Southwest Jackson**  
 Acres: **172.53**  
 Date: **9/1/2022**



Soils data provided by USDA and NRCS.

©2022 AgriData, Inc.

Area Symbol: SD610, Soil Area Version: 7  
 Area Symbol: SD611, Soil Area Version: 11

Code	Soil Description	Acres	Percent of field	PI Legend	Non-Irr Class *c	Irr Class *c	Productivity Index	Alfalfa hay Tons	Oats Bu	Spring wheat Bu	Tall wheatgrass AUM	Winter wheat Bu	*n NCCPI Soybeans
Ss	Samsil-Shale outcrop complex, 9 to 40 percent slopes	51.39	29.8%		Vlle		6						6
Aa	Lohmiller silty clay loam, channeled, 0 to 2 percent slopes	29.93	17.3%		Vlw		33	2			3.3		14
HoA	Haverson silty clay loam, 0 to 3 percent slopes	21.88	12.7%		Illw		79						35
PeC	Pierre clay, 3 to 9 percent slopes	20.61	11.9%		IVe		39	1.2	29	19	2	24	16
HhA	Haverson loam, 0 to 2 percent slopes, rarely flooded	14.64	8.5%		IIc		79						47
HIA	Haverson loam, 0 to 3 percent slopes, occasionally flooded	11.18	6.5%		Illw		79						48
KeA	Keith silt loam, 0 to 3 percent slopes	10.68	6.2%		IIc		91						56
PsE	Pierre-Samsil clays, 9 to 25 percent slopes	4.56	2.6%		Vle		11						13
KyA	Swanboy clay, 0 to 3 percent slopes	4.19	2.4%		VIc		9						22
Cv	Craft-Bankard variant very fine sandy loams	1.29	0.7%		IIe		60					38	28
TuC	Tuthill-Manter fine sandy loams, 5 to 9 percent slopes	1.19	0.7%		IVe		47						40
W	Moody silty clay loam, 2 to 6 percent slopes	0.56	0.3%		IIe	IIIe	67						75
W	Water	0.43	0.2%		VIII		0						
<b>Weighted Average</b>					<b>4.85</b>	<b>*-</b>	<b>41.1</b>	<b>0.5</b>	<b>3.5</b>	<b>2.3</b>	<b>0.8</b>	<b>3.2</b>	<b>*n 22.7</b>

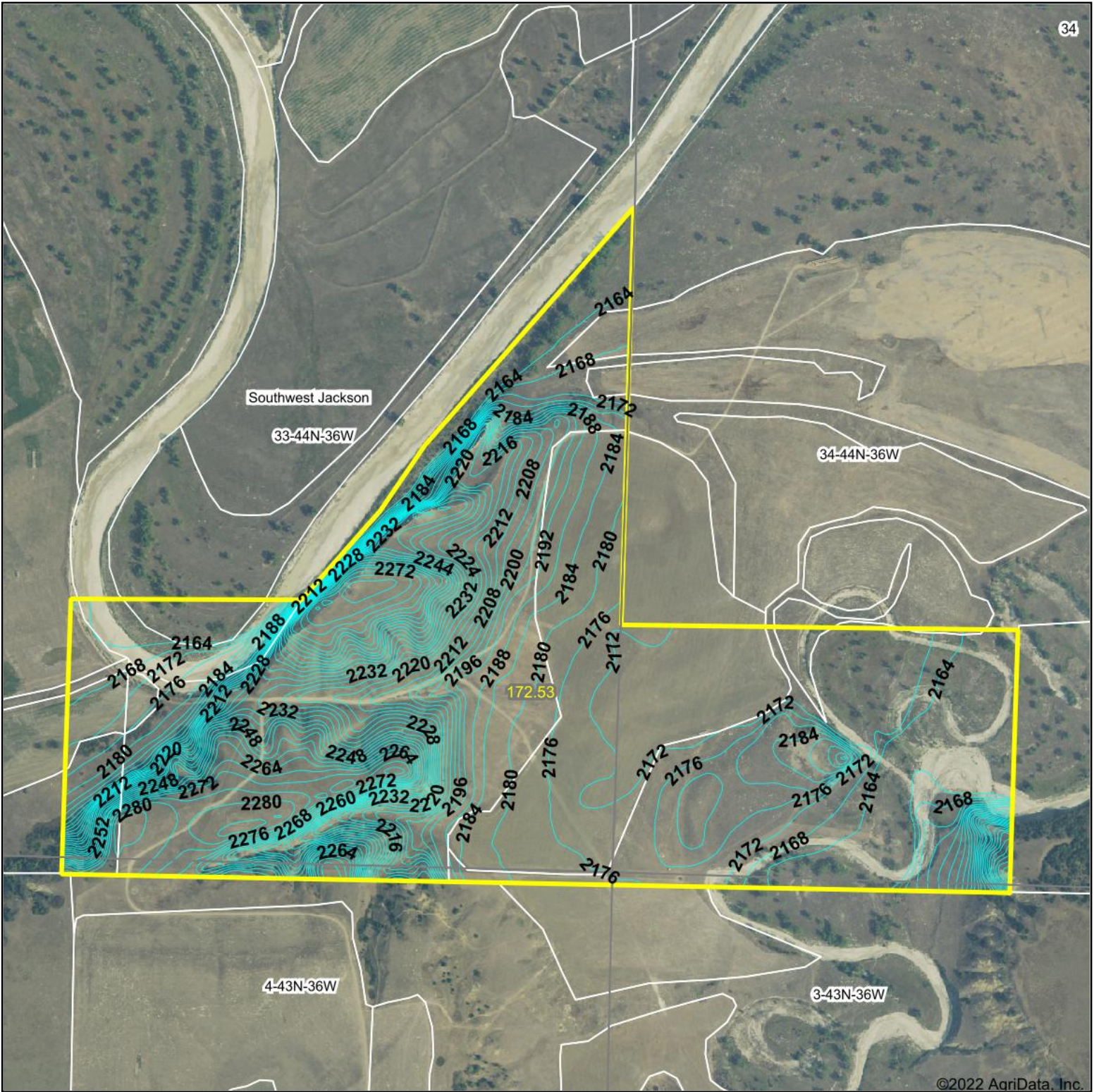
\*n: The aggregation method is "Weighted Average using all components"

\*c: Using Capabilities Class Dominant Condition Aggregation Method

\*- Irr Class weighted average cannot be calculated on the current soils data due to missing data.

Soils data provided by USDA and NRCS.

# Topography Contours



Source: USGS 10 meter dem

0ft 751ft 1503ft

Interval(ft): 4.0

Min: 2,159.7

Max: 2,287.9

Range: 128.2

Average: 2,197.5

Standard Deviation: 36.75 ft



9/1/2022

33-44N-36W  
Jackson County  
South Dakota

Map Center: 43° 44' 27.95, -101° 36' 17.17

Maps Provided By:



© AgriData, Inc. 2021 www.AgriDataInc.com

Field borders provided by Farm Service Agency as of 5/21/2008.

