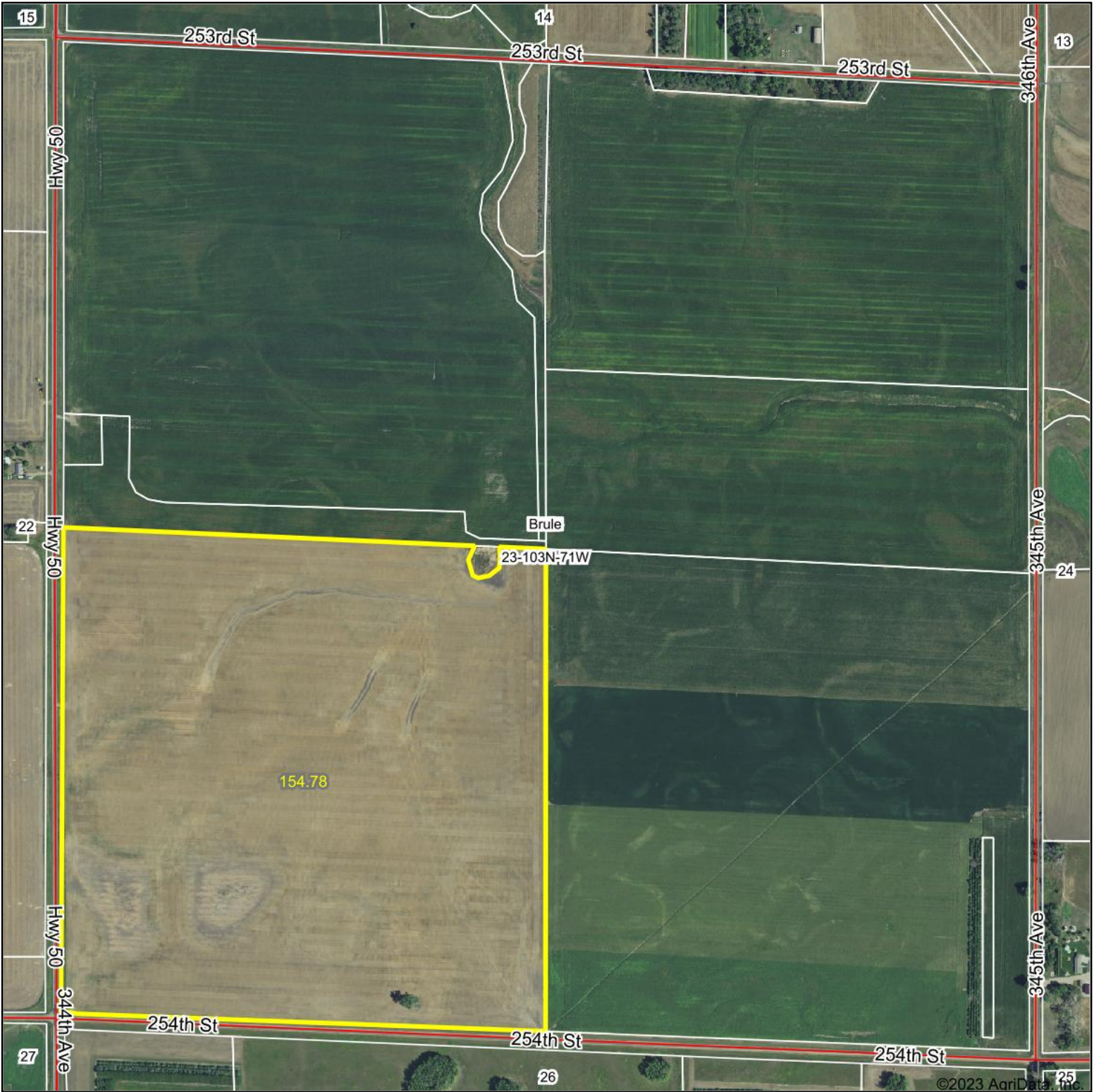
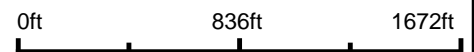


Aerial Map



Boundary Center: 43° 42' 20.95, -99° 18' 24.26



23-103N-71W
Brule County
South Dakota



Maps Provided By:

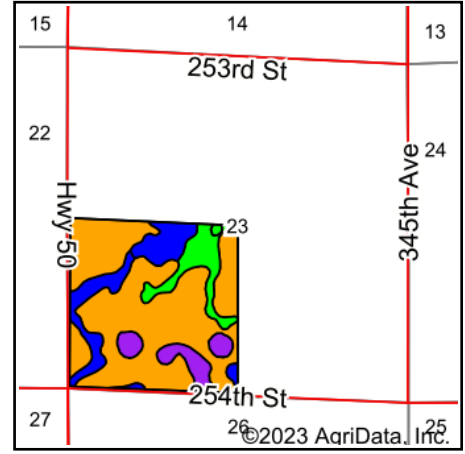
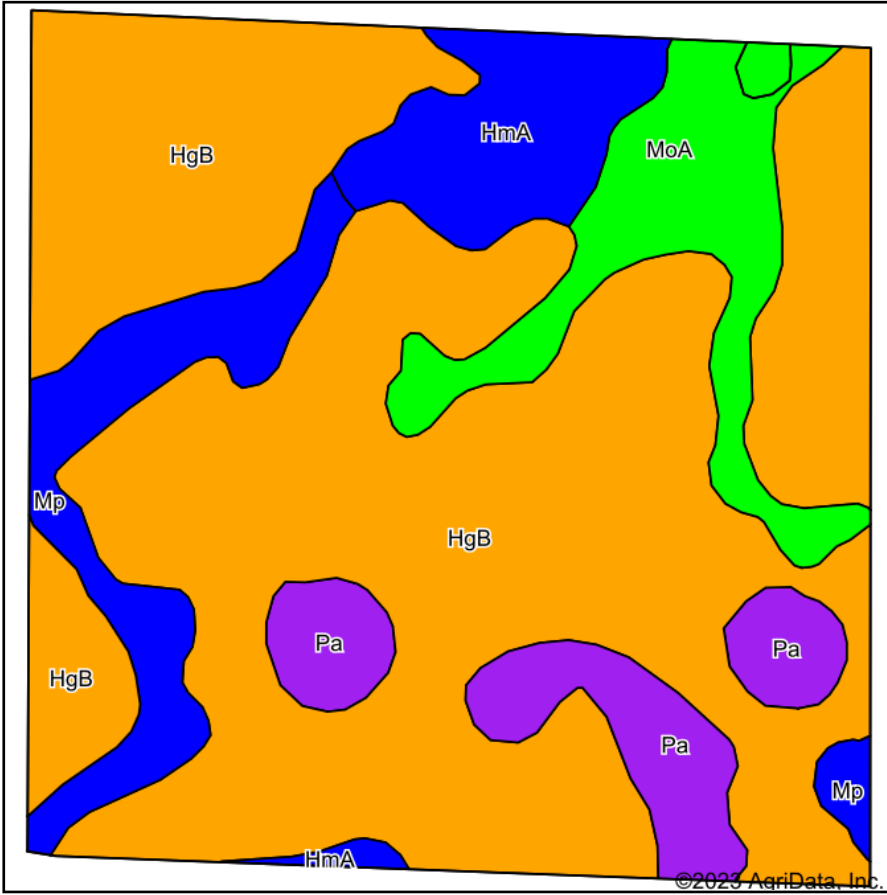


© AgriData, Inc. 2023 www.AgriDataInc.com

10/19/2023

Field borders provided by Farm Service Agency as of 5/21/2008.

Soils Map



State: **South Dakota**
 County: **Brule**
 Location: **23-103N-71W**
 Township: **Brule**
 Acres: **155.32**
 Date: **10/19/2023**

Maps Provided By:

 CUSTOMIZED ONLINE MAPPING
 © AgriData, Inc. 2023 www.AgriDataInc.com



Soils data provided by USDA and NRCS.

Area Symbol: SD603, Soil Area Version: 26

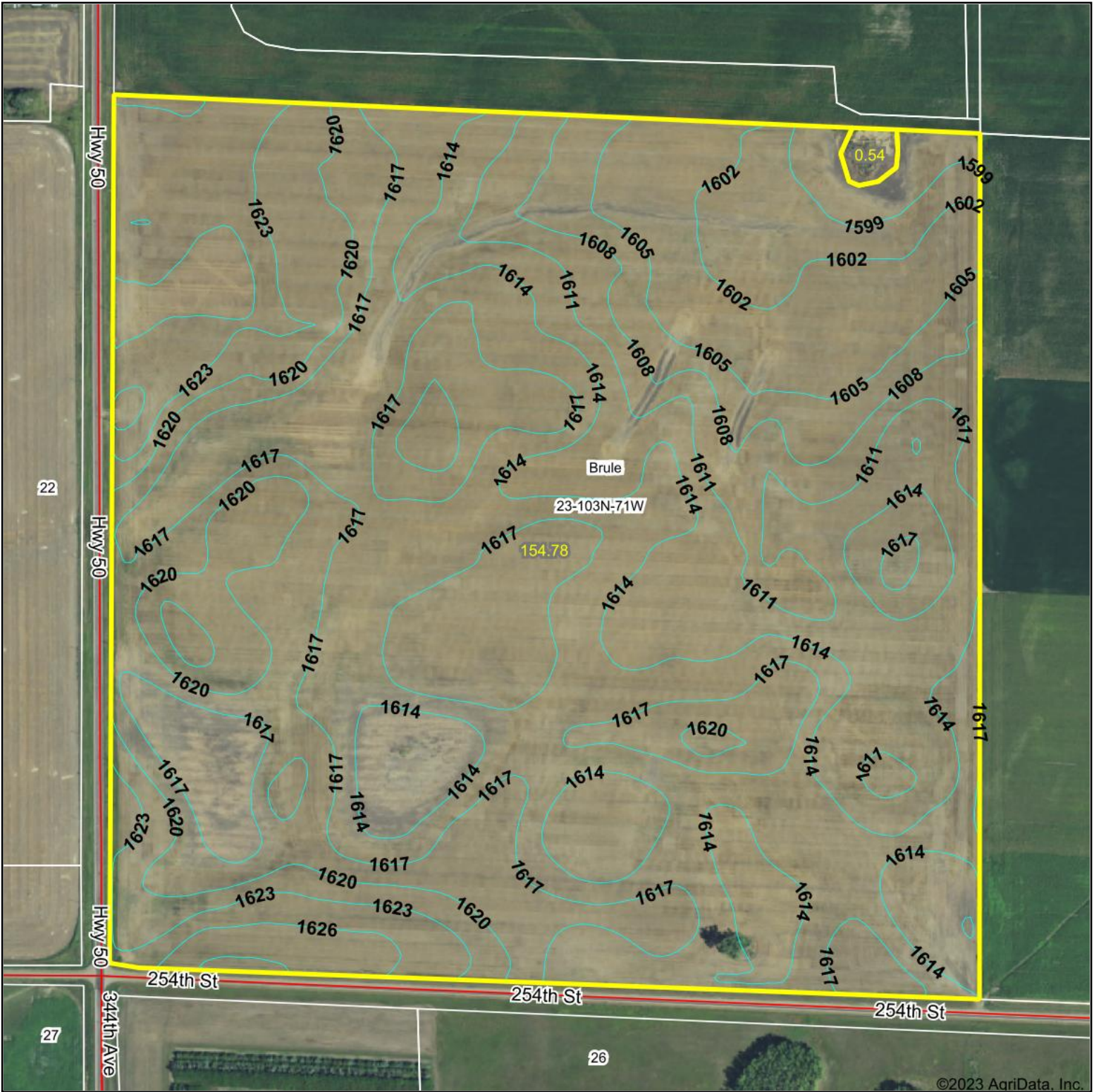
| Code | Soil Description | Acres | Percent of field | PI Legend | Non-Irr Class *c | Productivity Index | Alfalfa hay Tons | Brome-grass alfalfa AUM | Corn Bu | Grain sorghum Bu | Oats Bu | Spring wheat Bu | Winter wheat Bu | *n NCCPI Soybeans | |
|-------------------------|---|--------|------------------|-----------|------------------|--------------------|------------------|-------------------------|------------|------------------|-------------|-----------------|-----------------|-------------------|----------------|
| HgB | Highmore-Java complex, 1 to 5 percent slopes | 106.80 | 68.8% | | Ile | 76 | 2.7 | 4.5 | 53 | 57 | 61 | | 33 | 51 | |
| MoA | Mobridge silt loam, 0 to 2 percent slopes | 14.14 | 9.1% | | IIc | 94 | | | | | | | | 60 | |
| Mp | Mobridge-Plankinton silt loams | 12.19 | 7.8% | | IIc | 86 | 3 | 5 | 64 | 70 | 70 | 33 | 45 | 49 | |
| Pa | Plankinton silt loam | 11.82 | 7.6% | | IVw | 54 | | | 22 | 15 | 22 | | | 18 | |
| HmA | Highmore-Mobridge silt loams, 0 to 4 percent slopes | 10.37 | 6.7% | | IIc | 87 | 2 | 3.3 | 51 | 55 | 61 | 25 | 35 | 57 | |
| Weighted Average | | | | | | 2.15 | 77.5 | 2.2 | 3.7 | 46.5 | 49.5 | 53.2 | 4.3 | 28.6 | *n 49.6 |

*n: The aggregation method is "Weighted Average using all components"

*c: Using Capabilities Class Dominant Condition Aggregation Method

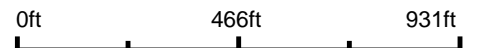
Soils data provided by USDA and NRCS.

Topography Contours



©2023 AgriData, Inc.

Source: USGS 10 meter dem



Interval(ft): 3.0

Min: 1,597.1

Max: 1,629.6

Range: 32.5

Average: 1,614.8

Standard Deviation: 6.23 ft



10/19/2023

23-103N-71W
Brule County
South Dakota

Boundary Center: 43° 42' 20.95, -99° 18' 24.26

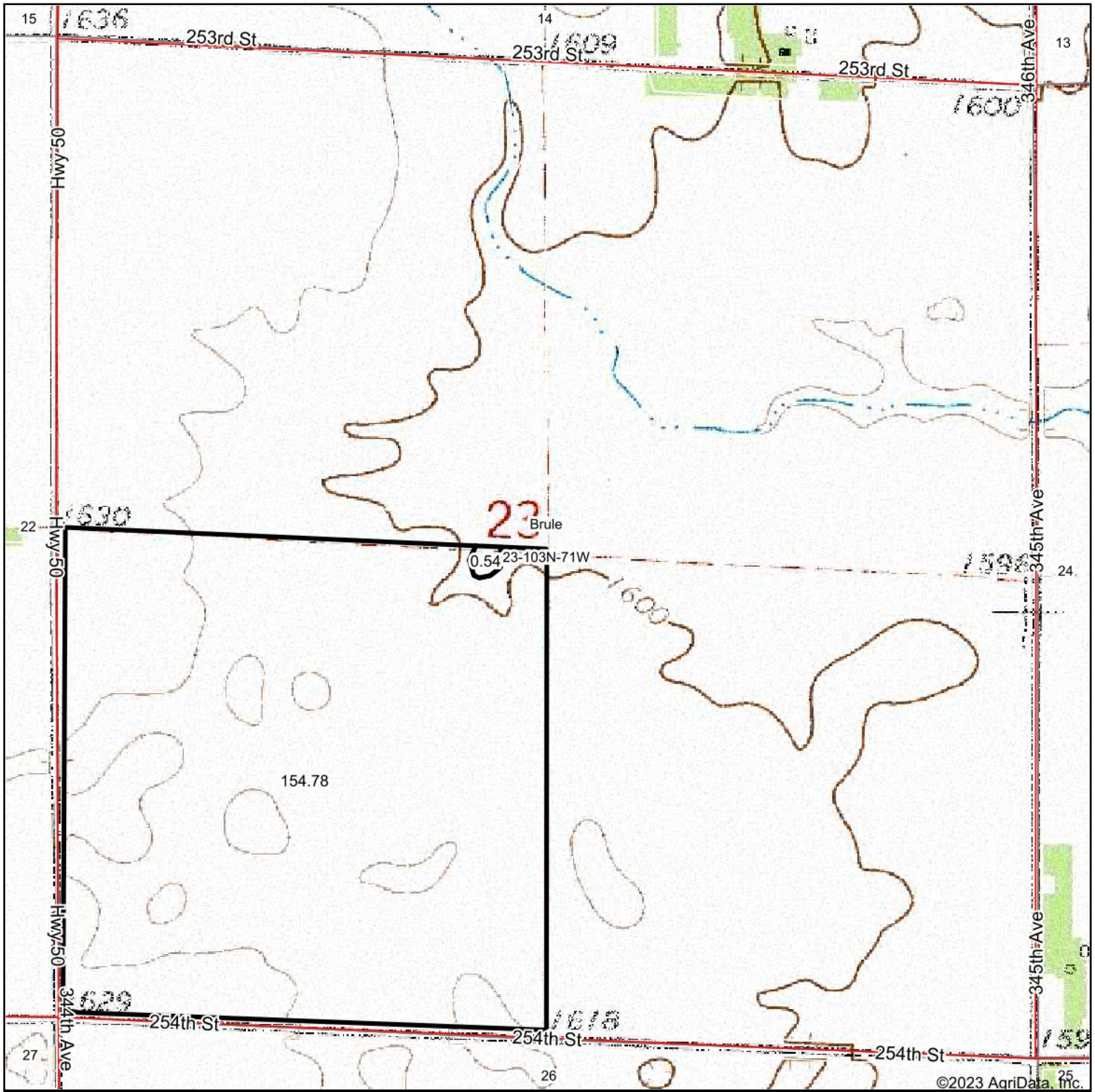
Maps Provided By:



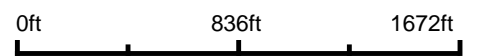
© AgriData, Inc. 2023 www.AgriDataInc.com

Field borders provided by Farm Service Agency as of 5/21/2008.

Topography Map



Map Center: 43° 42' 33.34, -99° 18' 6.6



23-103N-71W
Brule County
South Dakota



10/19/2023

Maps Provided By:



© AgriData, Inc. 2023 www.AgridataInc.com