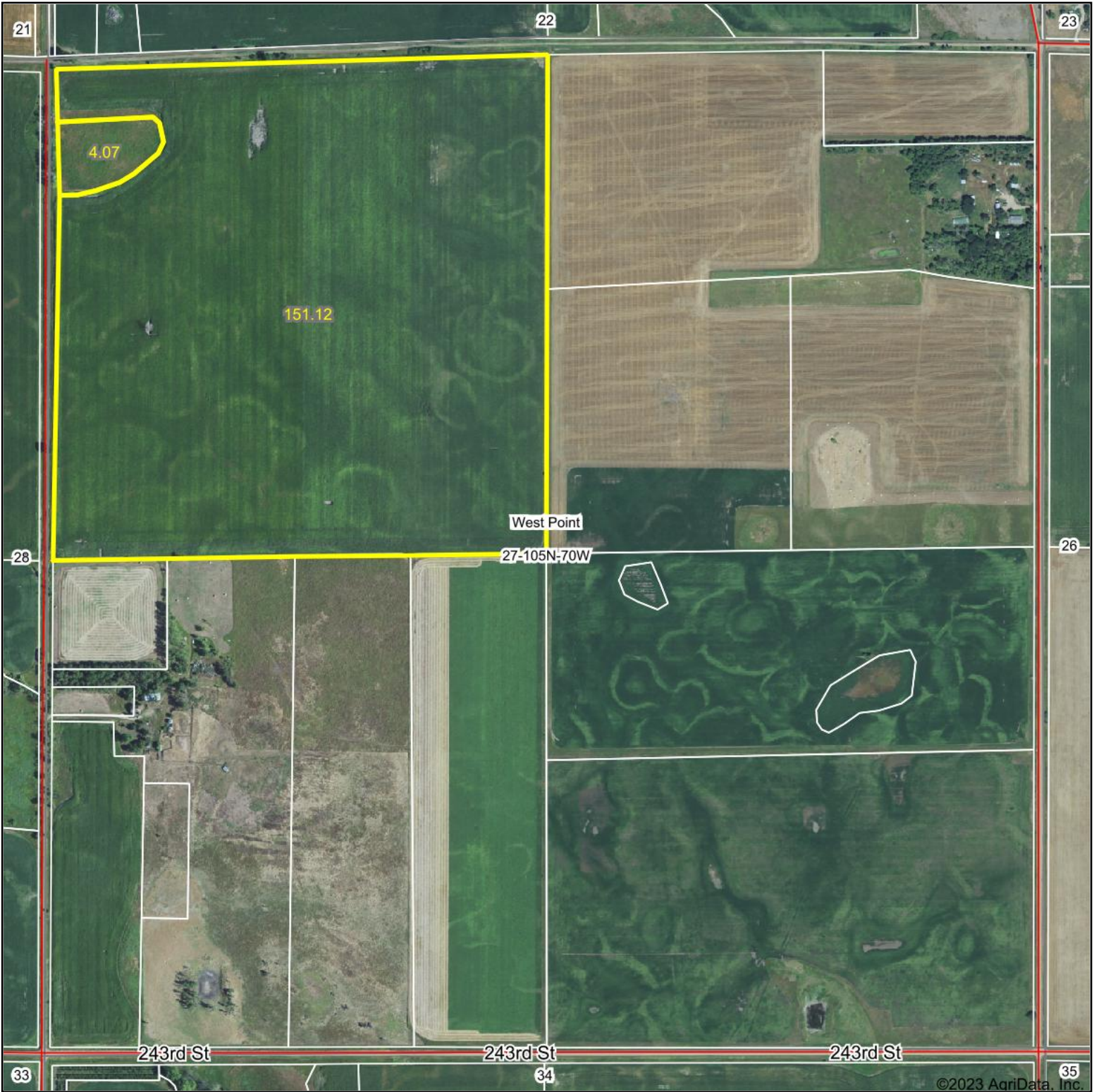
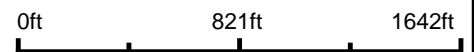


Aerial Map



Boundary Center: 43° 52' 21.24, -99° 13' 17.95



27-105N-70W
Brule County
South Dakota



Maps Provided By:

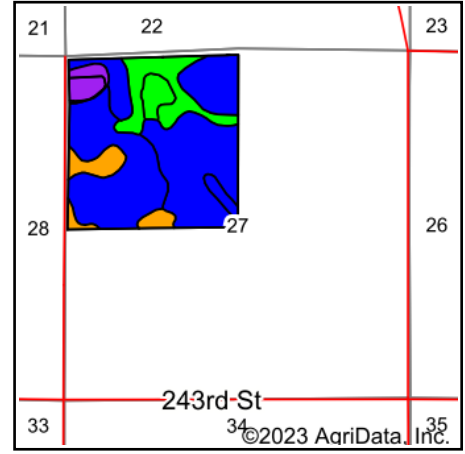
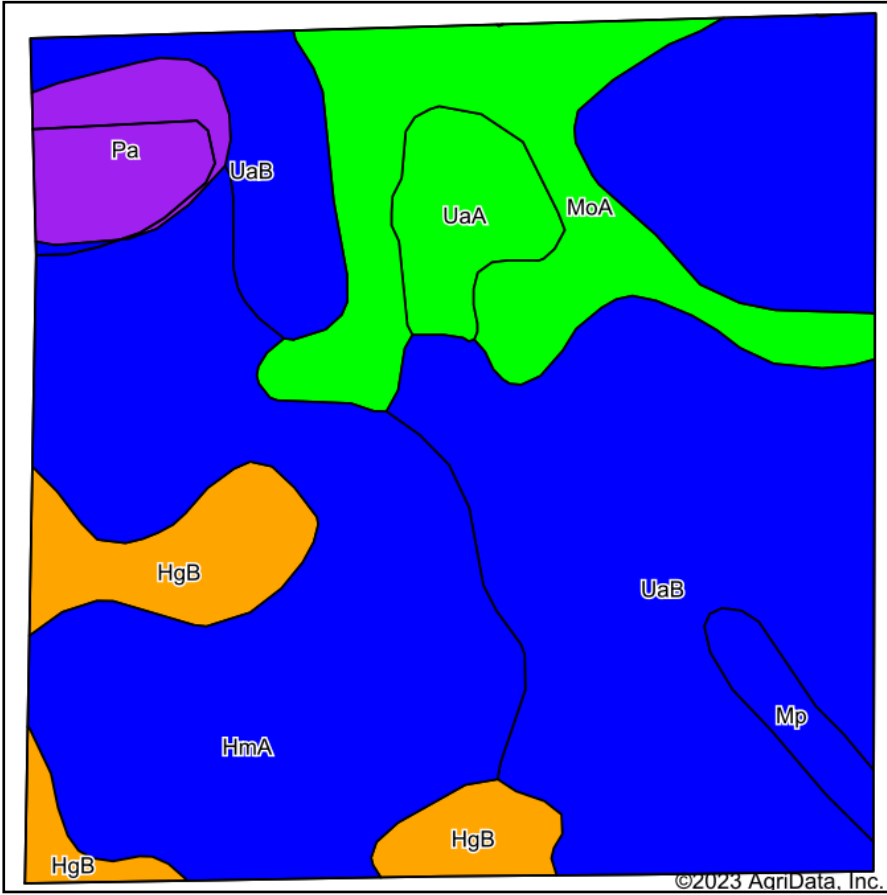


© AgriData, Inc. 2023 www.AgriDataInc.com

7/29/2023

Field borders provided by Farm Service Agency as of 5/21/2008.

Soils Map



State: **South Dakota**
 County: **Brule**
 Location: **27-105N-70W**
 Township: **West Point**
 Acres: **155.19**
 Date: **7/29/2023**

Maps Provided By:

 CUSTOMIZED ONLINE MAPPING
 © AgriData, Inc. 2023 www.AgriDataInc.com



Soils data provided by USDA and NRCS.

Area Symbol: SD603, Soil Area Version: 26

Code	Soil Description	Acres	Percent of field	PI Legend	Non-Irr Class *c	Irr Class *c	Productivity Index	Alfalfa hay Tons	Bromegrass alfalfa AUM	Corn Bu	Grain sorghum Bu	Oats Bu	Smooth bromegrass AUM	Spring wheat Bu	Winter wheat Bu	*n NCCPI Soybeans
UaB	Uly silt loam, 2 to 6 percent slopes	64.82	41.8%		Ile	IIle	84	1.9		30	35		3.5		27	55
HmA	Highmore-Mobridge silt loams, 0 to 4 percent slopes	45.40	29.3%		Ilc		87	2	3.3	51	55	61		25	35	57
MoA	Mobridge silt loam, 0 to 2 percent slopes	19.06	12.3%		Ilc		94									60
HgB	Highmore-Java complex, 1 to 5 percent slopes	10.99	7.1%		Ile		76	2.7	4.5	53	57	61			33	51
Pa	Plankinton silt loam	6.46	4.2%		IVw		54			22	15	22				18
UaA	Uly silt loam, 0 to 2 percent slopes	5.64	3.6%		Ilc	Ile	91	2.4		35	40		3.5		30	55
Mp	Mobridge-Plankinton silt loams	2.82	1.8%		Ilc		86	3	5	64	70	70		33	45	49
Weighted Average							84.6	1.7	1.4	34.6	38.1	24.4	1.6	7.9	25.8	*n 54.3

*n: The aggregation method is "Weighted Average using all components"

*c: Using Capabilities Class Dominant Condition Aggregation Method

*: Irr Class weighted average cannot be calculated on the current soils data due to missing data.

Soils data provided by USDA and NRCS.

Topography Contours



©2023 AgriData, Inc.

Source: USGS 10 meter dem

Interval(ft): 3.0

Min: 1,773.9

Max: 1,803.6

Range: 29.7

Average: 1,786.5

Standard Deviation: 5.77 ft

0ft 463ft 926ft



7/29/2023

27-105N-70W
Brule County
South Dakota

Boundary Center: 43° 52' 21.24, -99° 13' 17.95

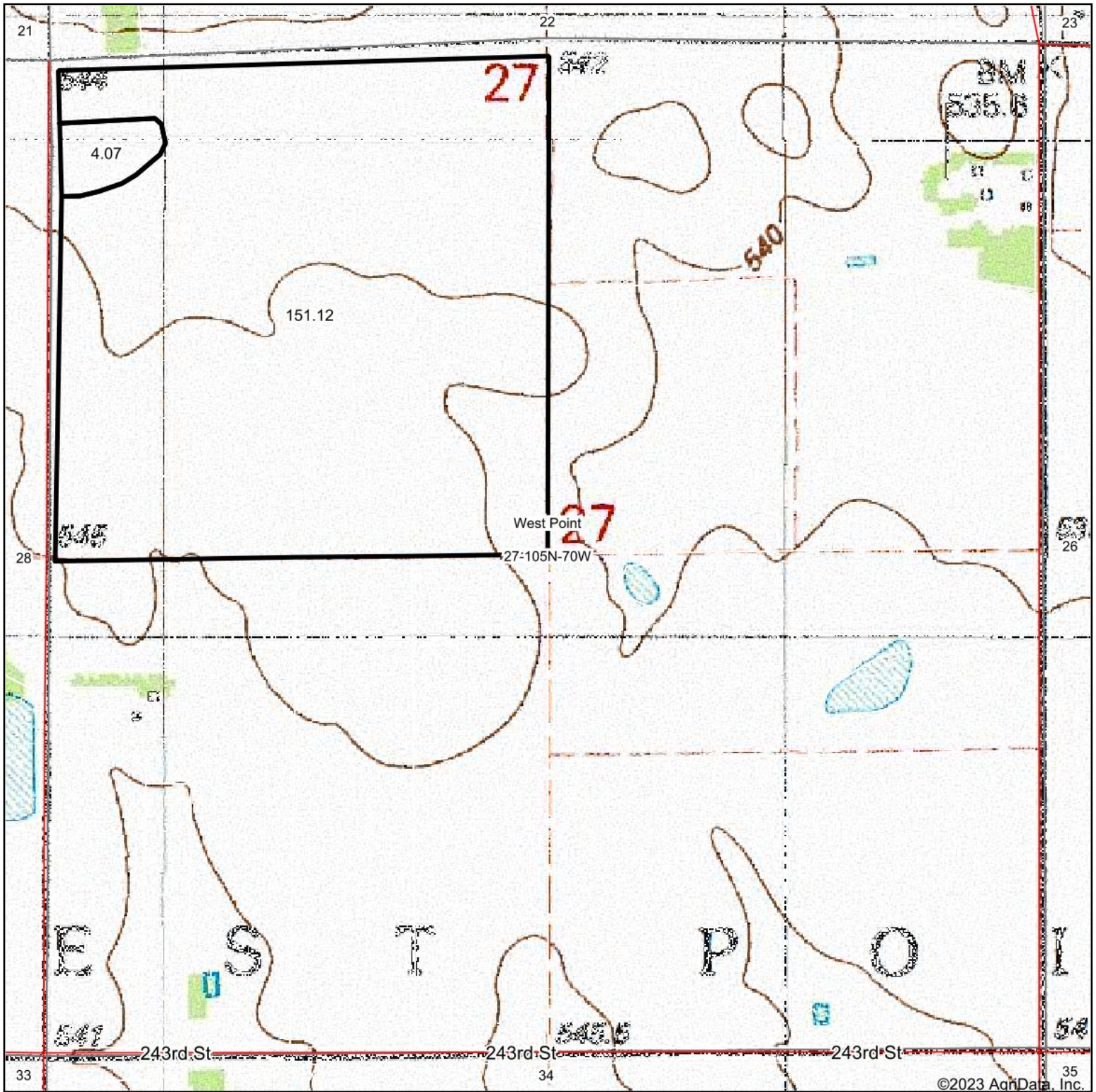
Maps Provided By:



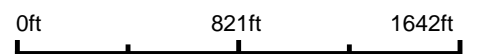
© AgriData, Inc. 2023 www.AgriDataInc.com

Field borders provided by Farm Service Agency as of 5/21/2008.

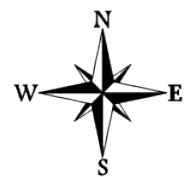
Topography Map



Map Center: 43° 52' 8.79, -99° 13' 0.18



27-105N-70W
Brule County
South Dakota



7/29/2023

Maps Provided By:



© AgriData, Inc. 2023 www.AgridataInc.com

Field borders provided by Farm Service Agency as of 5/21/2008.