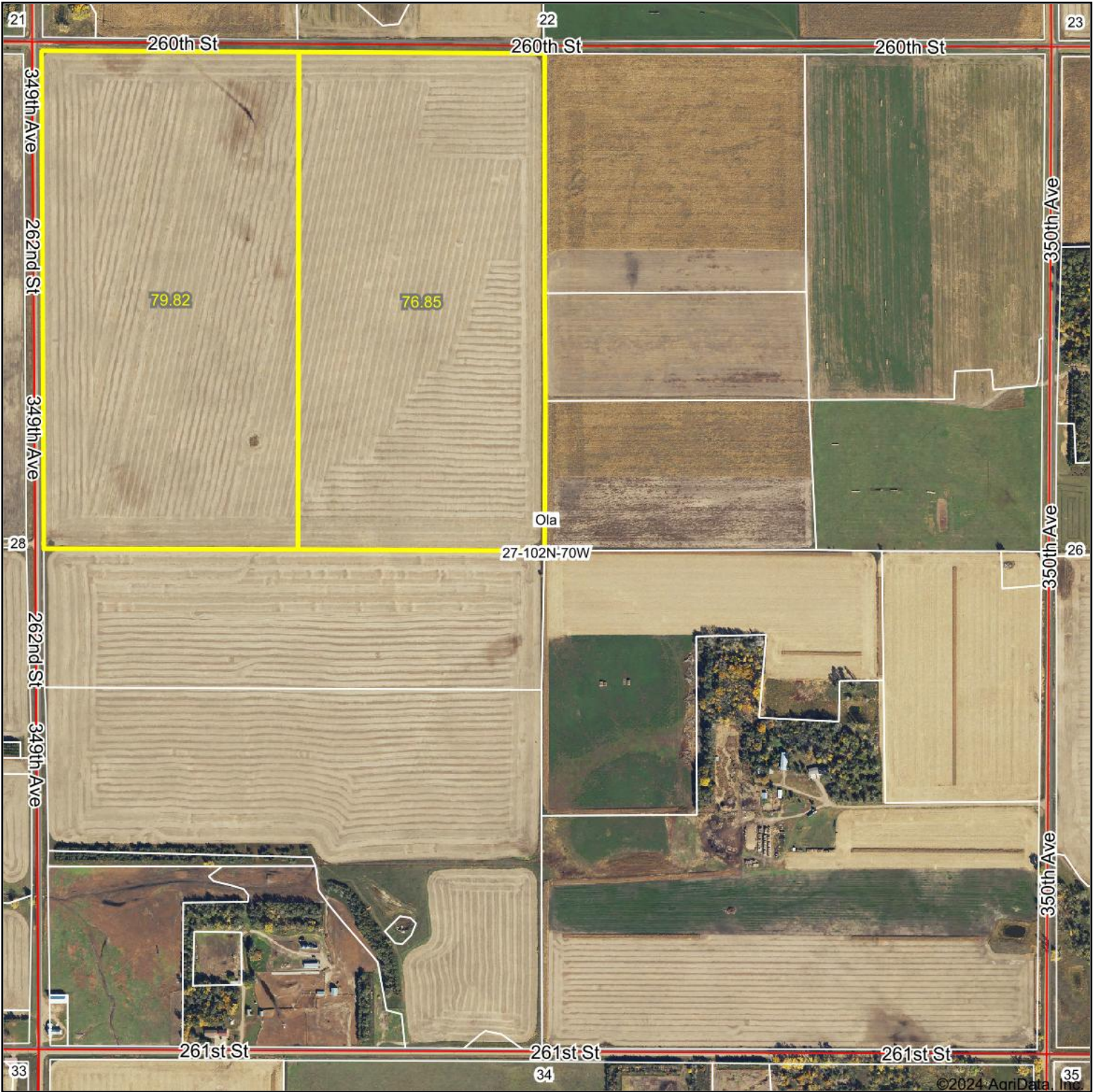
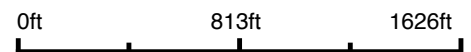


# Aerial Map



Boundary Center: 43° 36' 40.36, -99° 12' 22.37



**27-102N-70W**  
**Brule County**  
**South Dakota**



Maps Provided By:

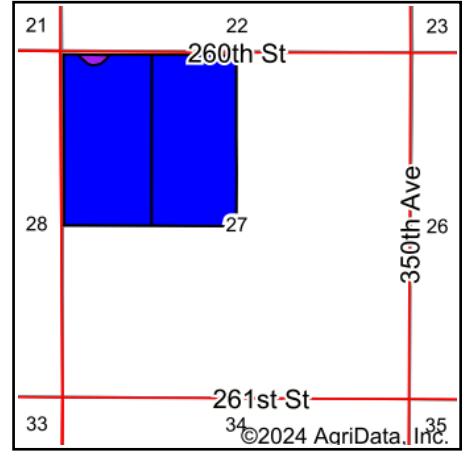
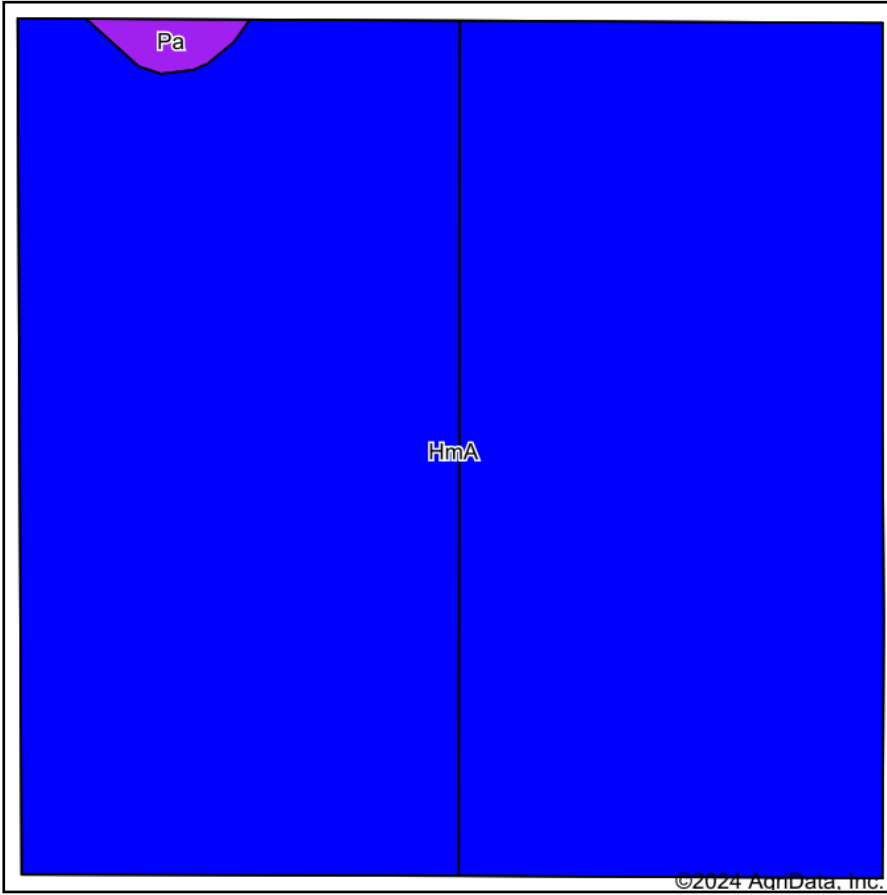


© AgriData, Inc. 2023 www.AgriDataInc.com

5/1/2024

Field borders provided by Farm Service Agency as of 5/21/2008.

# Soils Map



State: **South Dakota**  
 County: **Brule**  
 Location: **27-102N-70W**  
 Township: **Ola**  
 Acres: **156.67**  
 Date: **5/1/2024**

Maps Provided By:  
  
 CUSTOMIZED ONLINE MAPPING  
 © AgriData, Inc. 2023 [www.AgriDataInc.com](http://www.AgriDataInc.com)



Soils data provided by USDA and NRCS.

Area Symbol: SD603, Soil Area Version: 27

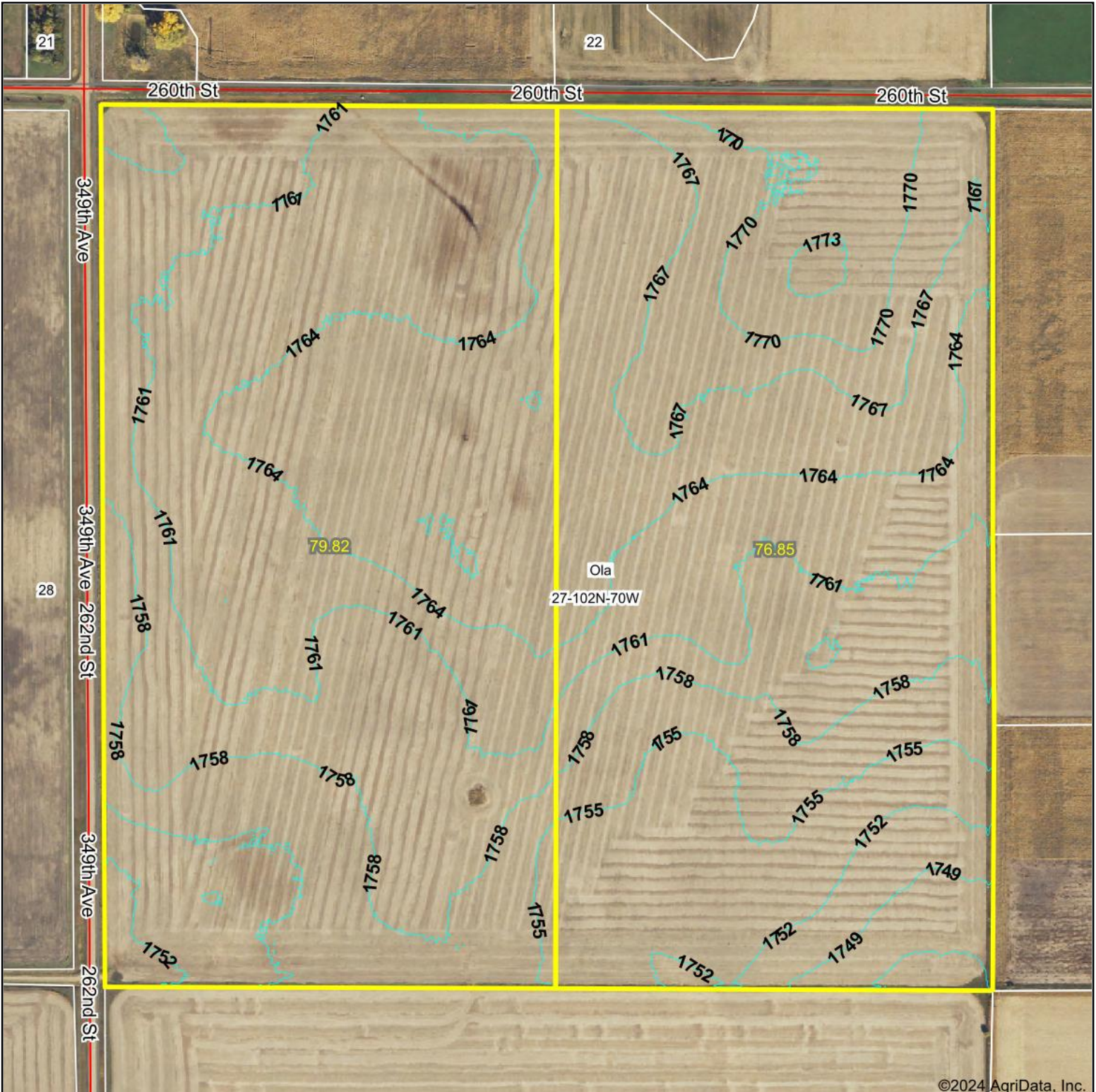
Code	Soil Description	Acres	Percent of field	PI Legend	Non-Irr Class *c	Productivity Index	Alfalfa hay Tons	Bromegrass alfalfa AUM	Corn Bu	Grain sorghum Bu	Oats Bu	Spring wheat Bu	Winter wheat Bu	*n NCCPI Soybeans
HmA	Highmore-Mobridge silt loams, 0 to 4 percent slopes	155.43	99.2%		IIc	87	2	3.3	51	55	61	25	35	57
Pa	Plankinton silt loam	1.24	0.8%		IVw	54			22	15	22			20
<b>Weighted Average</b>					<b>2.02</b>	<b>86.7</b>	<b>2</b>	<b>3.3</b>	<b>50.8</b>	<b>54.7</b>	<b>60.7</b>	<b>24.8</b>	<b>34.7</b>	<b>*n 56.7</b>

\*n: The aggregation method is "Weighted Average using all components"

\*c: Using Capabilities Class Dominant Condition Aggregation Method



# Topography Contours



©2024 AgriData, Inc.

Source: USGS 1 meter dem

0ft 459ft 918ft

Interval(ft): 3.0

Min: 1,744.9

Max: 1,773.9

Range: 29.0

Average: 1,761.1

Standard Deviation: 5.35 ft



5/1/2024

**27-102N-70W**  
**Brule County**  
**South Dakota**

Boundary Center: 43° 36' 40.36, -99° 12' 22.37

Maps Provided By:

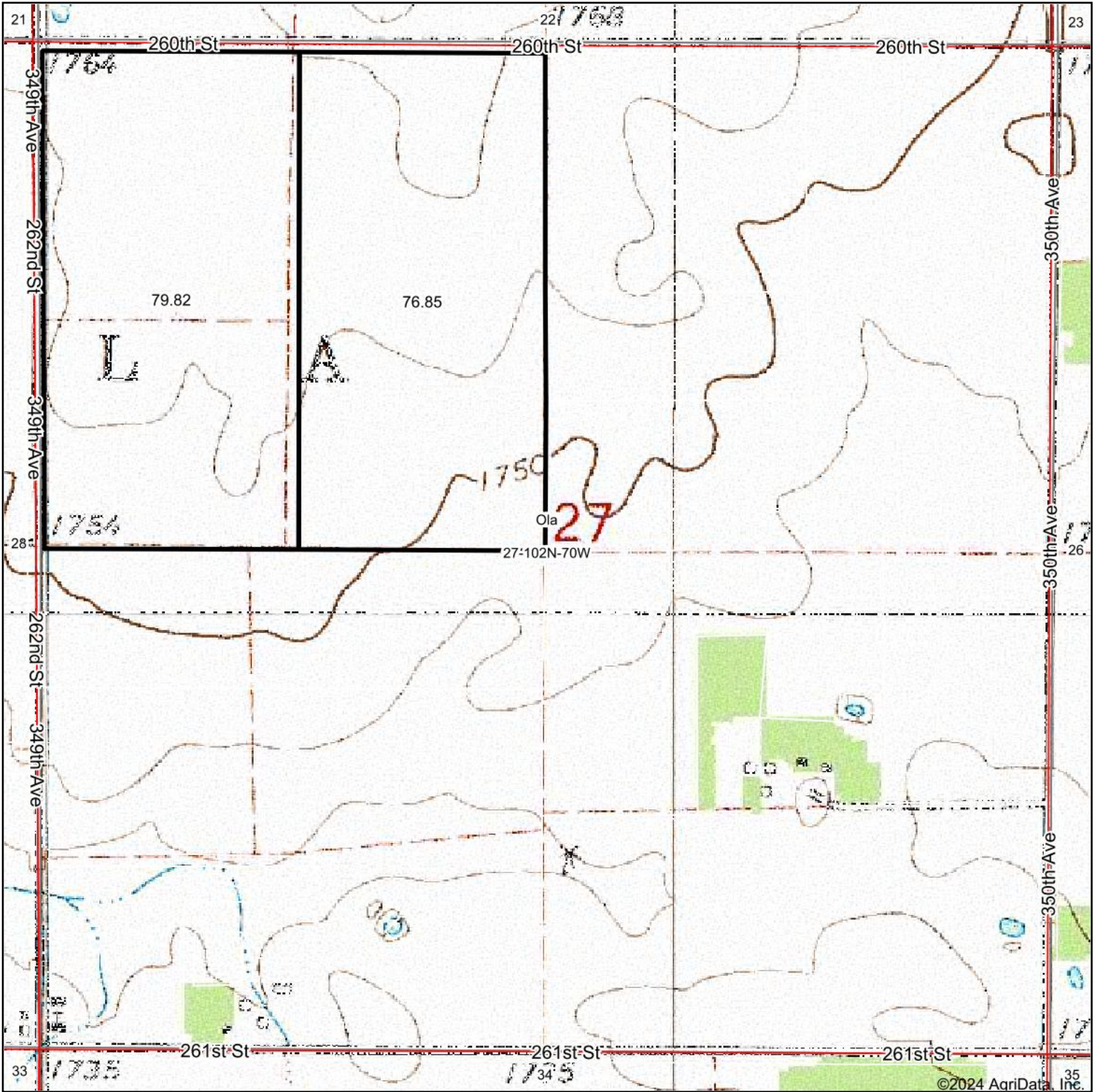


© AgriData, Inc. 2023 www.AgriDataInc.com

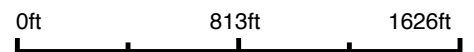
Field borders provided by Farm Service Agency as of 5/21/2008.



# Topography Map



Map Center: 43° 36' 27.68, -99° 12' 4.34



**27-102N-70W**  
**Brule County**  
**South Dakota**



Maps Provided By:  
  
CUSTOMIZED ONLINE MAPPING  
© AgriData, Inc. 2023 www.AgriDataInc.com