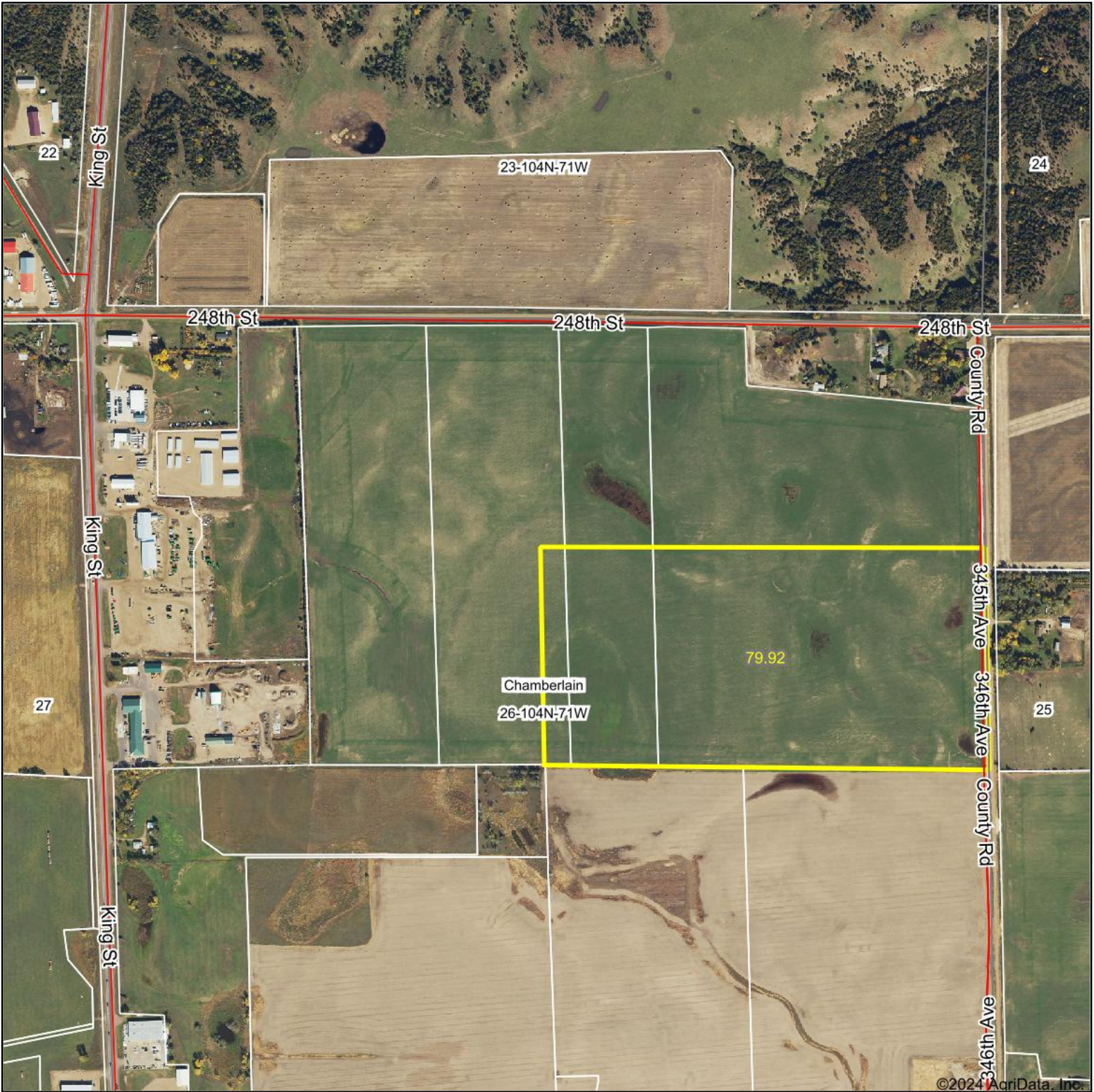
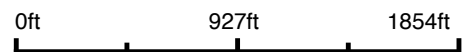


Aerial Map



©2024 AgriData, Inc.

Boundary Center: 43° 46' 59.02, -99° 17' 52.84



26-104N-71W
Brule County
South Dakota



Maps Provided By:

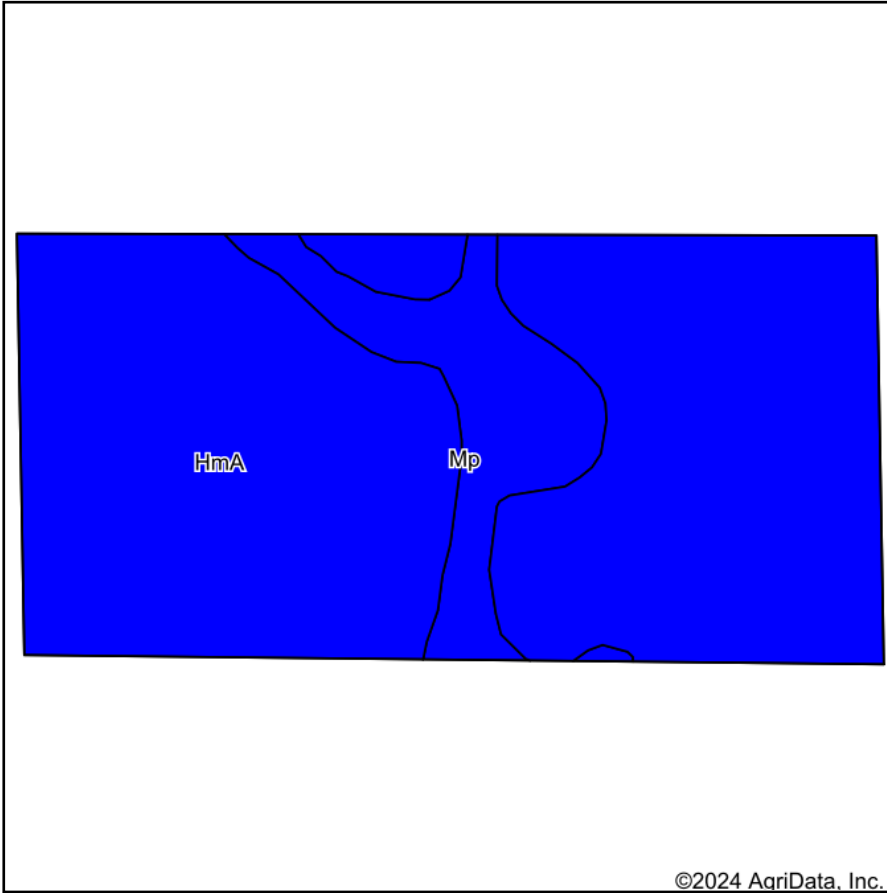


© AgriData, Inc. 2023 www.AgriDataInc.com

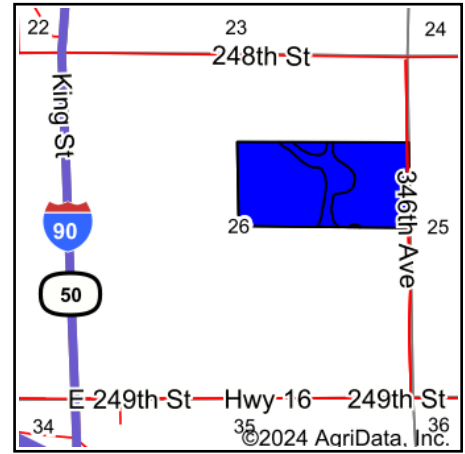
8/1/2024

Field borders provided by Farm Service Agency as of 5/21/2008.

Soils Map



Soils data provided by USDA and NRCS.



State: **South Dakota**
 County: **Brule**
 Location: **26-104N-71W**
 Township: **Chamberlain**
 Acres: **79.92**
 Date: **8/1/2024**

Maps Provided By:

 CUSTOMIZED ONLINE MAPPING
 © AgriData, Inc. 2023 www.AgriDataInc.com



Area Symbol: SD603, Soil Area Version: 27

Code	Soil Description	Acres	Percent of field	PI Legend	Non-Irr Class *c	Productivity Index	Alfalfa hay Tons	Bromegrass alfalfa AUM	Corn Bu	Grain sorghum Bu	Oats Bu	Spring wheat Bu	Winter wheat Bu	*n NCCPI Soybeans
HmA	Highmore-Mobridge silt loams, 0 to 4 percent slopes	69.55	87.0%		IIc	87	2	3.3	51	55	61	25	35	57
Mp	Mobridge-Plankinton silt loams	10.37	13.0%		IIc	86	3	5	64	70	70	33	45	50
Weighted Average					2.00	86.9	2.1	3.5	52.7	56.9	62.2	26	36.3	*n 56.1

*n: The aggregation method is "Weighted Average using all components"

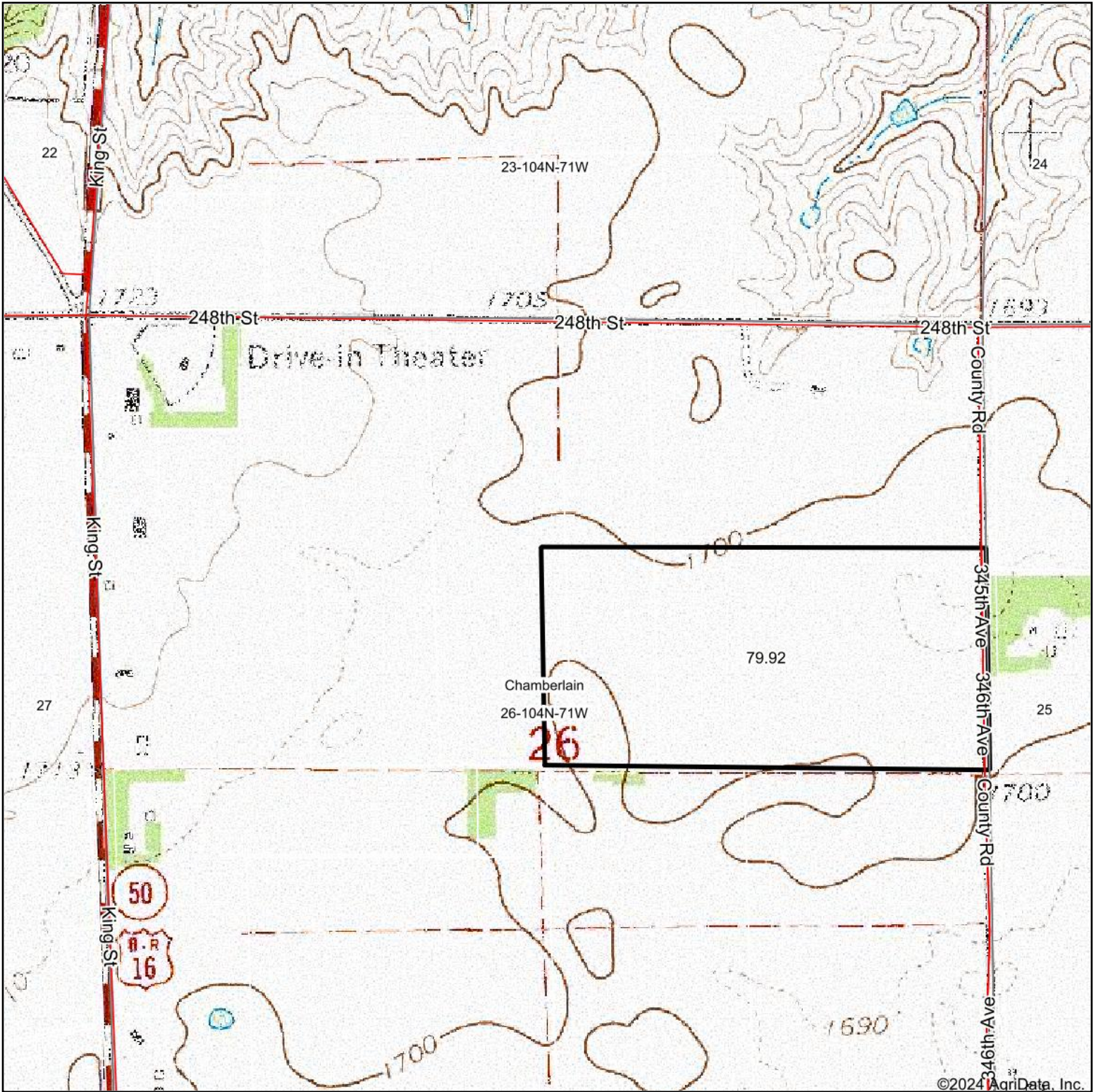
*c: Using Capabilities Class Dominant Condition Aggregation Method

Soils data provided by USDA and NRCS.

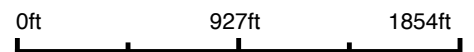
Topography Contours



Topography Map



Map Center: 43° 47' 5.52, -99° 18' 10.65



26-104N-71W
Brule County
South Dakota



Maps Provided By:

CUSTOMIZED ONLINE MAPPING
© AgriData, Inc. 2023 www.AgriDataInc.com