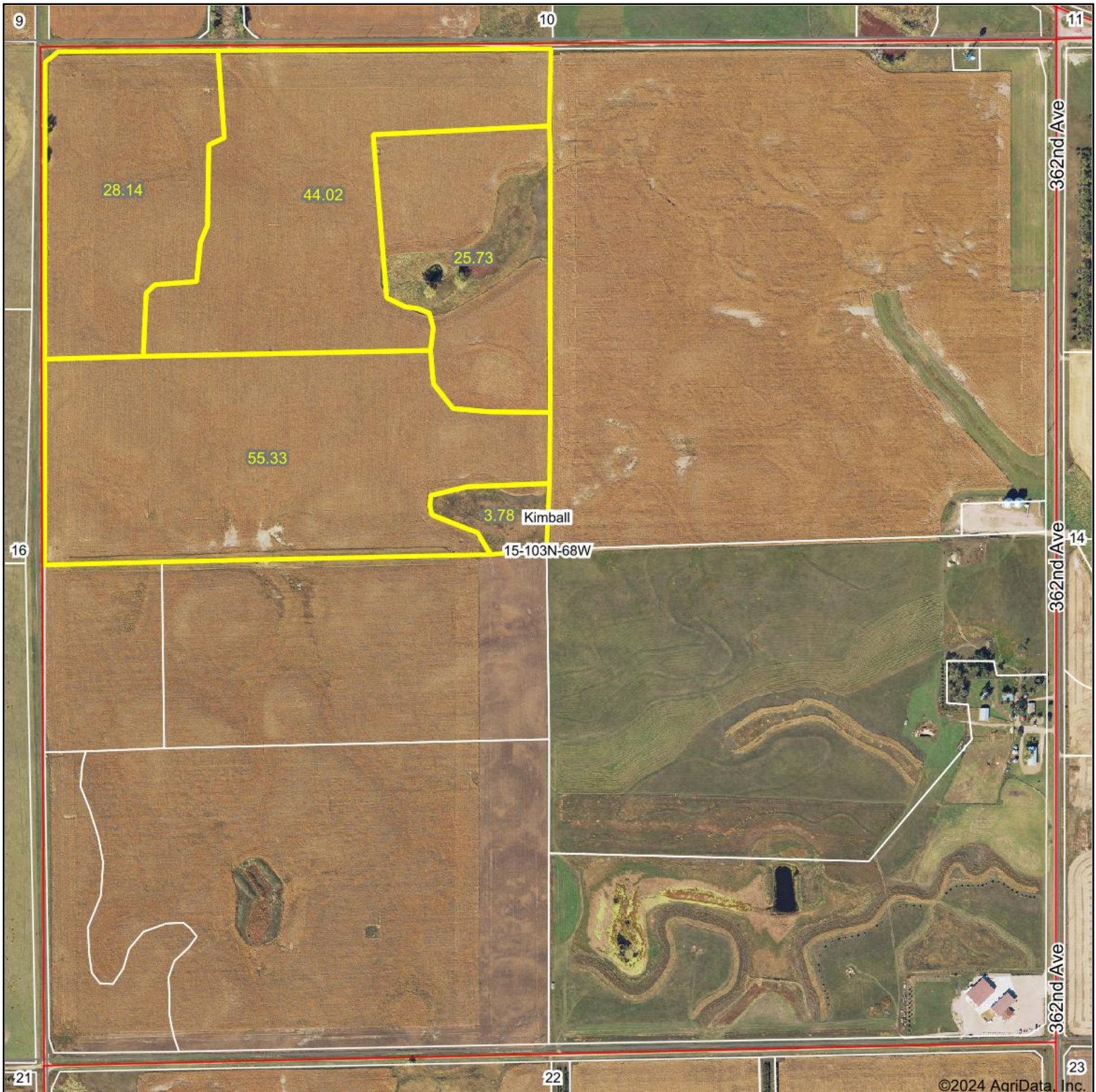
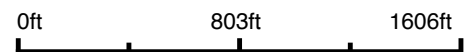


Aerial Map



©2024 AgriData, Inc.

Boundary Center: 43° 43' 36.29, -98° 58' 7.24



15-103N-68W
Brule County
South Dakota



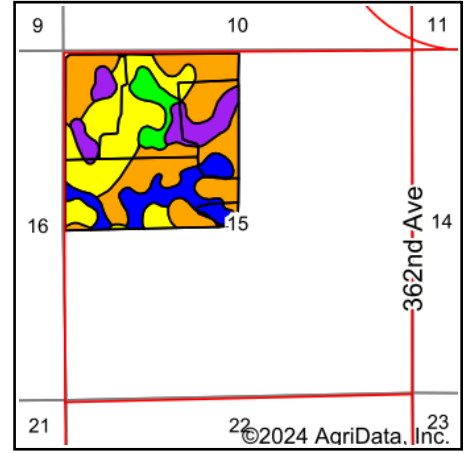
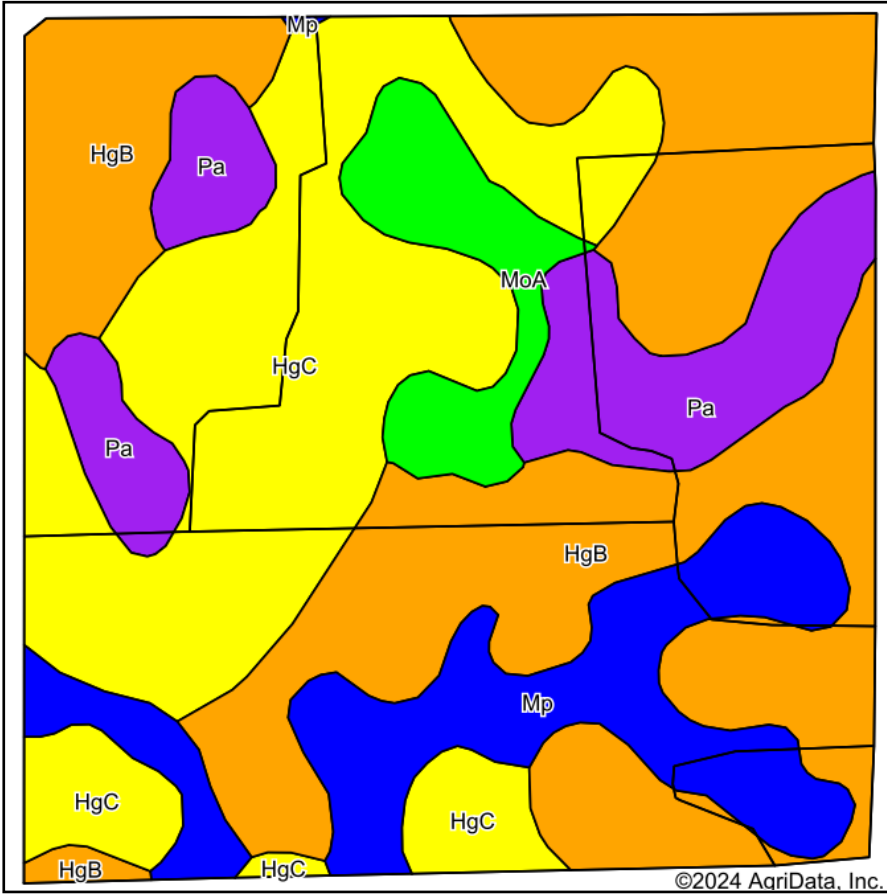
Maps Provided By:

CUSTOMIZED ONLINE MAPPING
© AgriData, Inc. 2023 www.AgriDataInc.com

8/16/2024

Field borders provided by Farm Service Agency as of 5/21/2008.

Soils Map



State: **South Dakota**
 County: **Brule**
 Location: **15-103N-68W**
 Township: **Kimball**
 Acres: **157**
 Date: **8/16/2024**

Maps Provided By:

 CUSTOMIZED ONLINE MAPPING
 © AgriData, Inc. 2023 www.AgriDataInc.com



Soils data provided by USDA and NRCS.

Area Symbol: SD603, Soil Area Version: 27

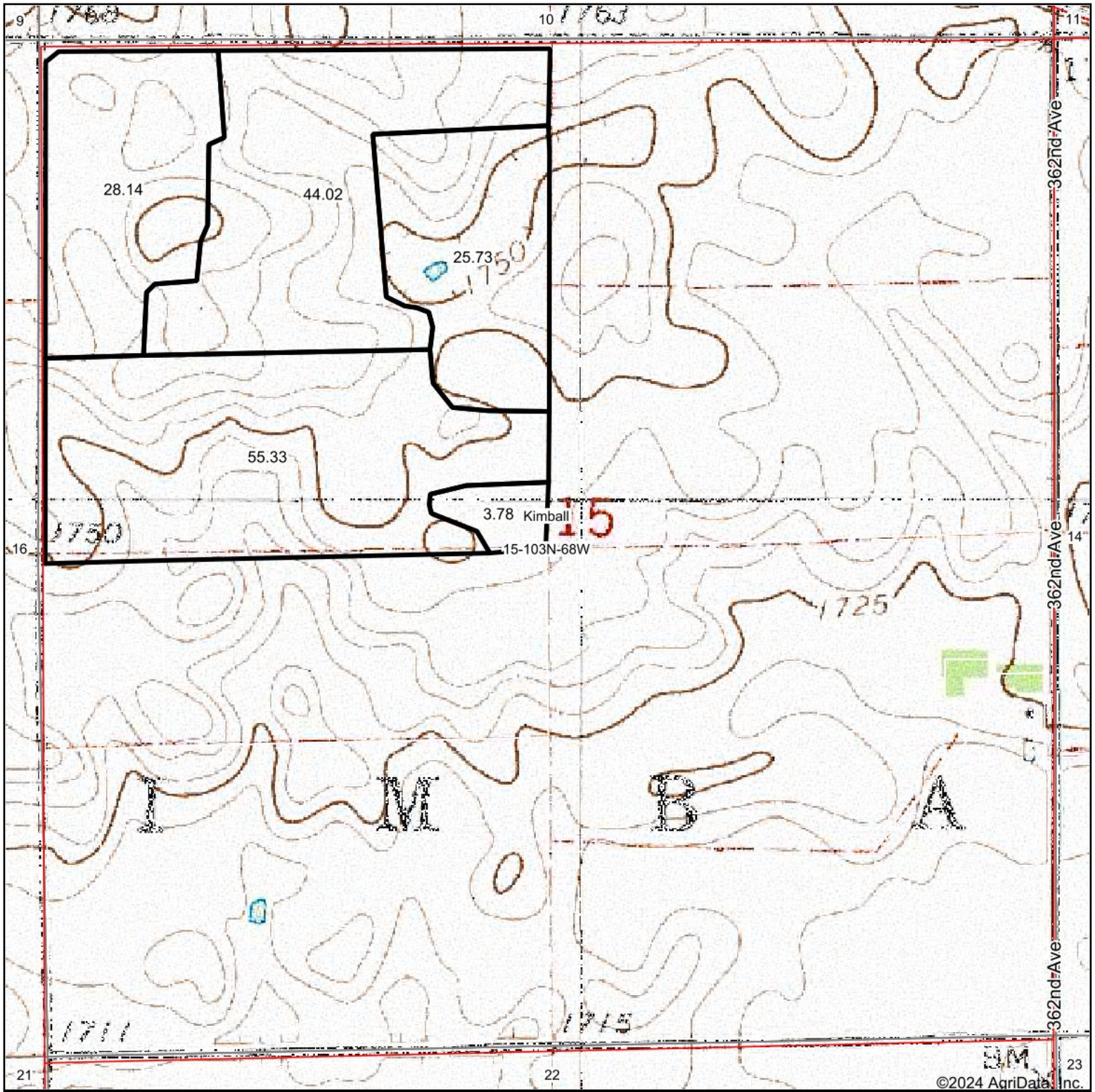
Code	Soil Description	Acres	Percent of field	PI Legend	Non-Irr Class *c	Productivity Index	Alfalfa hay Tons	Bromegrass alfalfa AUM	Corn Bu	Grain sorghum Bu	Oats Bu	Spring wheat Bu	Winter wheat Bu	*n NCCPI Soybeans
HgB	Highmore-Java complex, 1 to 5 percent slopes	62.52	39.8%		Ile	76	2.7	4.5	53	57	61		33	51
HgC	Highmore-Java complex, 5 to 9 percent slopes	47.55	30.3%		IVe	64	2.3	3.8	44	49	56		28	50
Mp	Mobridge-Plankinton silt loams	20.58	13.1%		IIc	86	3	5	64	70	70	33	45	50
Pa	Plankinton silt loam	17.90	11.4%		IVw	54			22	15	22			20
MoA	Mobridge silt loam, 0 to 2 percent slopes	8.45	5.4%		IIc	94								60
Weighted Average						2.83			45.3	48.4	52.9	4.3	27.5	*n 47.5

*n: The aggregation method is "Weighted Average using all components"

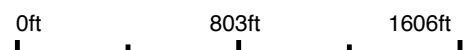
*c: Using Capabilities Class Dominant Condition Aggregation Method

Soils data provided by USDA and NRCS.

Topography Map



Map Center: 43° 43' 23.96, -98° 57' 49.66



15-103N-68W
Brule County
South Dakota



8/28/2024

Maps Provided By:



© AgriData, Inc. 2023 www.AgriDataInc.com

Field borders provided by Farm Service Agency as of 5/21/2008.