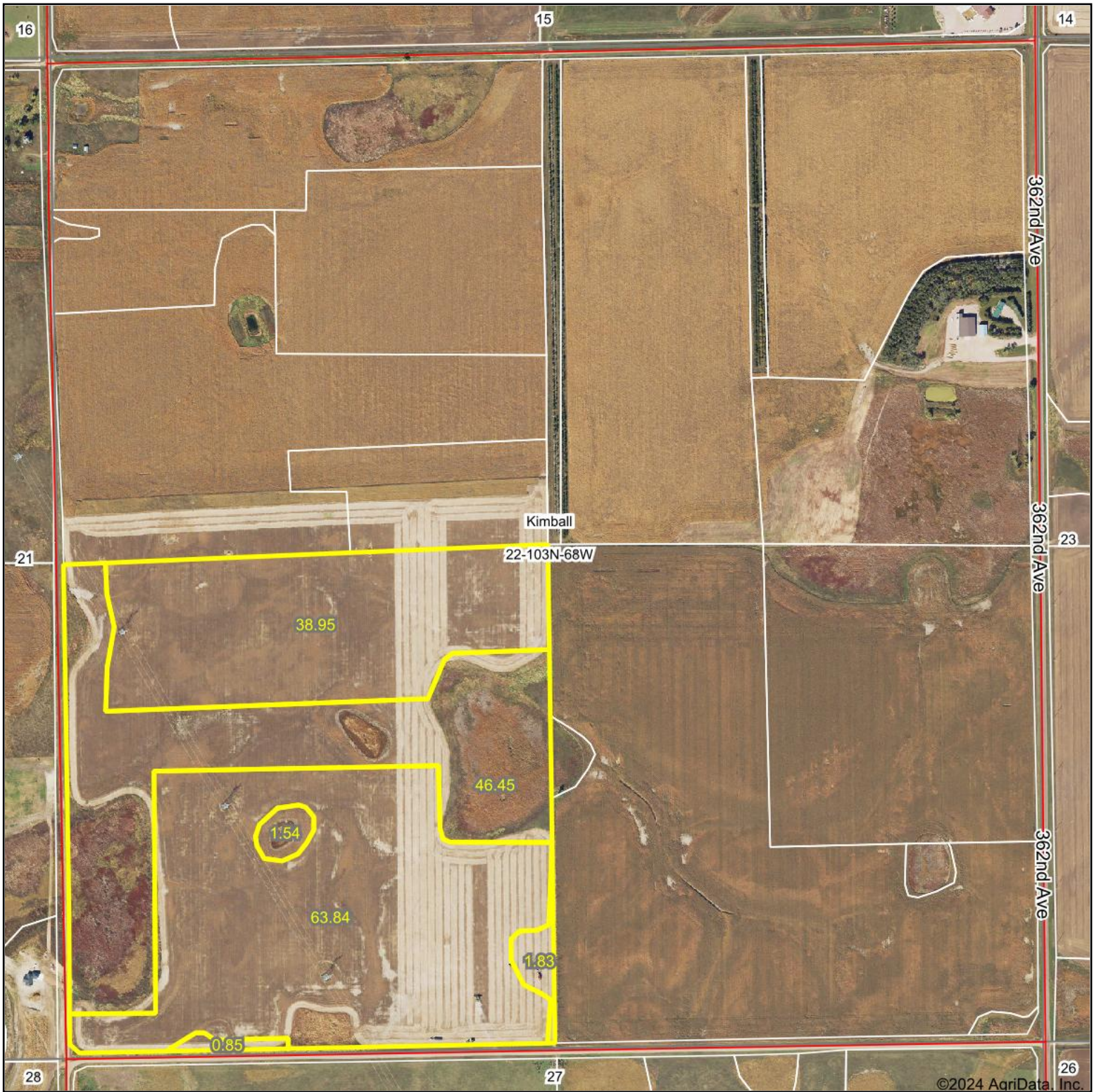
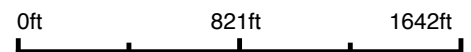


Aerial Map



©2024 AgriData, Inc.

Boundary Center: 43° 42' 19.18, -98° 58' 6.27



22-103N-68W
Brule County
South Dakota



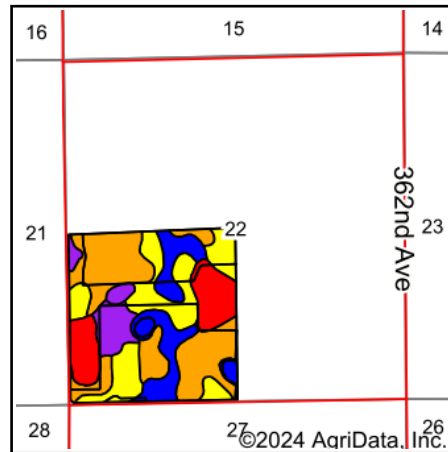
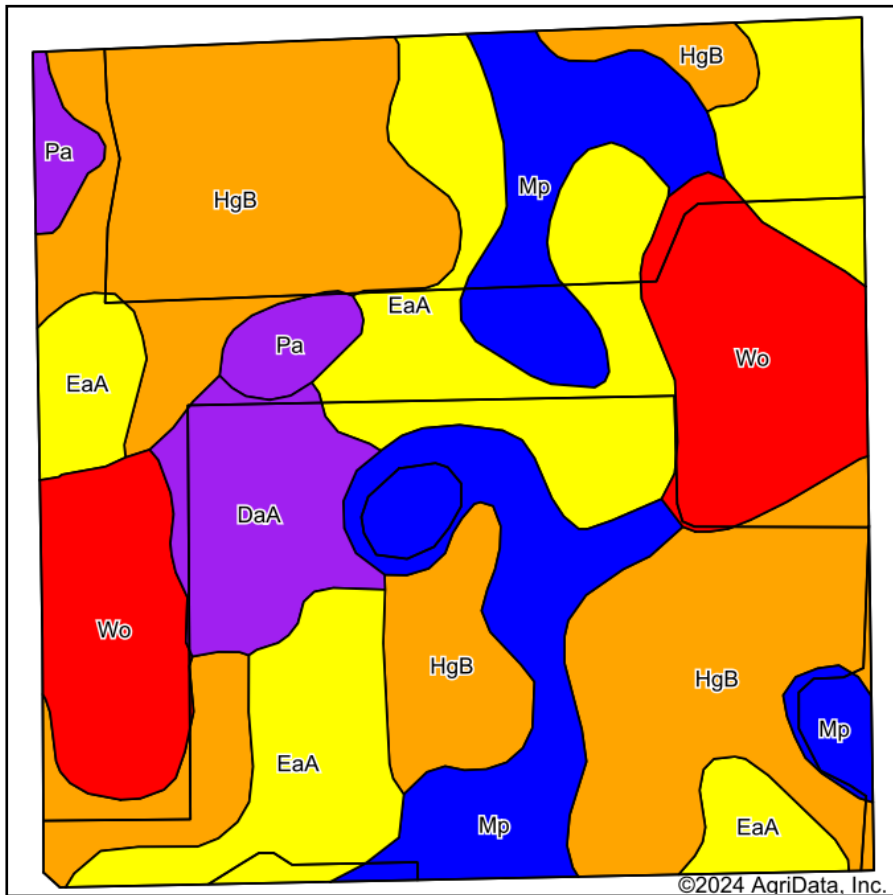
Maps Provided By:

CUSTOMIZED ONLINE MAPPING
© AgriData, Inc. 2023 www.AgriDataInc.com

8/16/2024

Field borders provided by Farm Service Agency as of 5/21/2008.

Soils Map



State: **South Dakota**
 County: **Brule**
 Location: **22-103N-68W**
 Township: **Kimball**
 Acres: **153.46**
 Date: **8/16/2024**

Maps Provided By:

 CUSTOMIZED ONLINE MAPPING
 © AgriData, Inc. 2023 www.AgriDataInc.com



Soils data provided by USDA and NRCS.

Area Symbol: SD603, Soil Area Version: 27

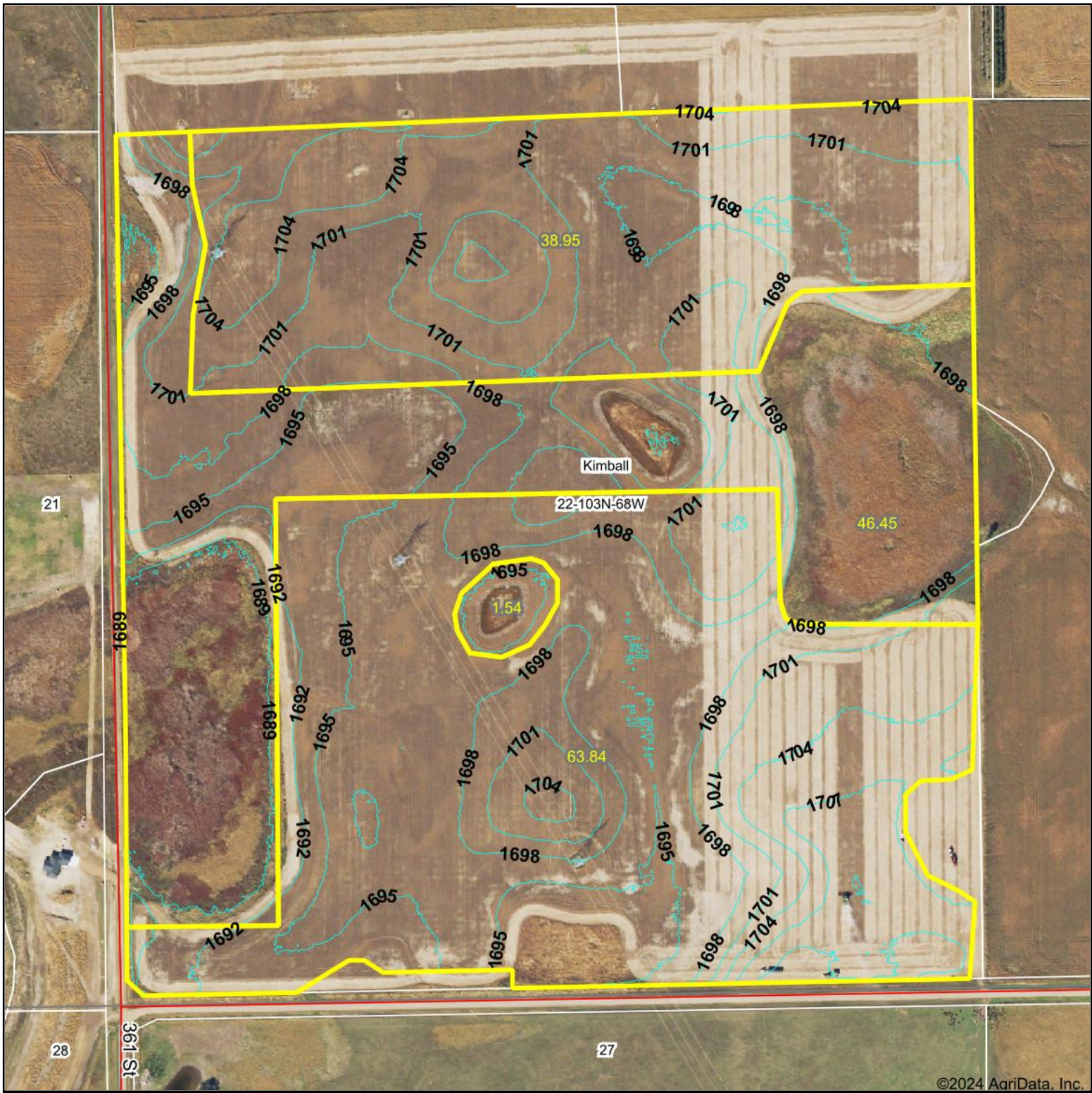
Code	Soil Description	Acres	Percent of field	PI Legend	Non-Irr Class *c	Productivity Index	Alfalfa hay Tons	Bromegrass alfalfa AUM	Corn Bu	Grain sorghum Bu	Oats Bu	Spring wheat Bu	Winter wheat Bu	*n NCCPI Soybeans
HgB	Highmore-Java complex, 1 to 5 percent slopes	53.61	34.9%		Ile	76	2.7	4.5	53	57	61		33	51
EaA	Eakin-DeGrey silt loams, 0 to 2 percent slopes	39.45	25.7%		Ilc	70								53
Mp	Mobridge-Plankinton silt loams	24.83	16.2%		Ilc	86	3	5	64	70	70	33	45	50
Wo	Worthing silty clay loam, 0 to 1 percent slopes	22.42	14.6%		Vw	30								4
DaA	DeGrey-Eakin-Jerauld silt loams, 0 to 2 percent slopes	9.29	6.1%		IVs	58								45
Pa	Plankinton silt loam	3.86	2.5%		IVw	54			22	15	22			20
Weighted Average					2.61	67.7	1.4	2.4	29.4	31.6	33.2	5.3	18.8	*n 43.3

*n: The aggregation method is "Weighted Average using all components"

*c: Using Capabilities Class Dominant Condition Aggregation Method

Soils data provided by USDA and NRCS.

Topography Contours



©2024 AgriData, Inc.

Source: USGS 1 meter dem

Interval(ft): 3.0

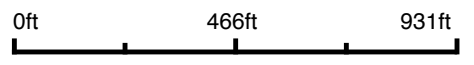
Min: 1,686.5

Max: 1,712.7

Range: 26.2

Average: 1,698.1

Standard Deviation: 4.82 ft



8/28/2024

22-103N-68W
Brule County
South Dakota

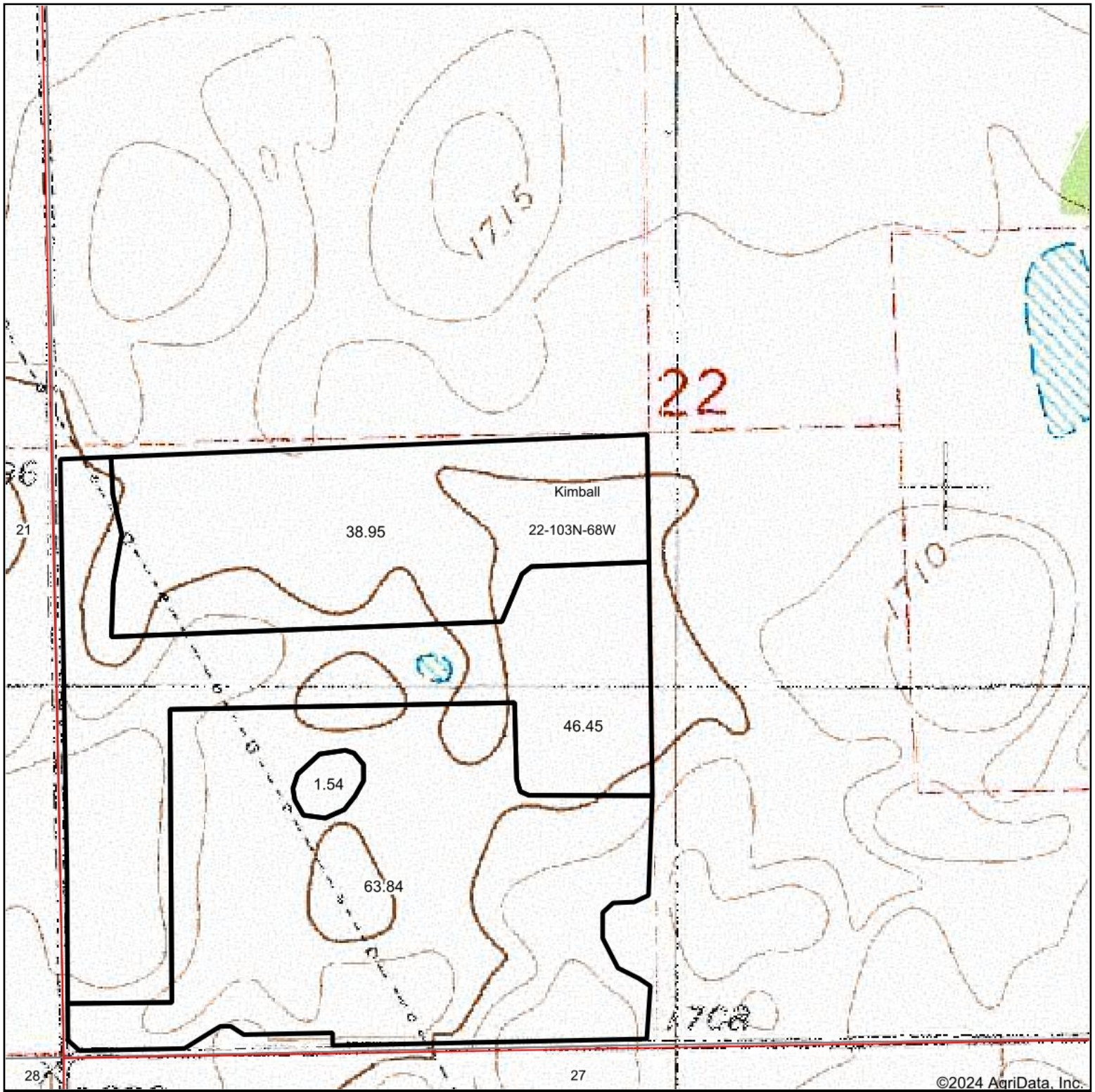
Boundary Center: 43° 42' 19.18, -98° 58' 6.37

Maps Provided By:

surety
 CUSTOMIZED ONLINE MAPPING
 © AgriData, Inc. 2023 www.AgriDataInc.com

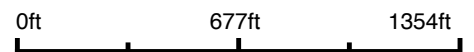
Field borders provided by Farm Service Agency as of 5/21/2008.

Topography Map



©2024 AgriData, Inc.

Map Center: 43° 42' 27.62, -98° 57' 55.03



22-103N-68W
Brule County
South Dakota



8/28/2024

Maps Provided By:



© AgriData, Inc. 2023 www.AgriDataInc.com

Field borders provided by Farm Service Agency as of 5/21/2008.